

# TECHNICAL DATA SHEET

## PIRL FOLDING PLATFORM

NT 062 - V04 GB – September 2019



 **FORTAL**<sup>®</sup>  
[www.fortal.fr](http://www.fortal.fr)

 Made in France

## 1. INTRODUCTION

This mobile folding platform is designed for the construction sector. It is for individual use.

Platform equipped with :

- 2 wheels Ø 125 mm - non load-bearing wheels to allow the user to move it around easily
- Passageway over a toilet bowl (3 and 4 steps models)
- Outriggers only for the 5 and 6 steps models
- Serial tool tray 530 x 150 mm
- Folding safety rails
- Mobile straps locking
- Delivered mounted and folded.

## 2. COMPLIANCE

This technical data sheet certifies that the values mentioned are correct as well as in compliance with:

- NF P 93 353

## 3. REPRESENTATION

**Maximum working load: 150 Kg**

Platform dimensions:

413 x 479 mm

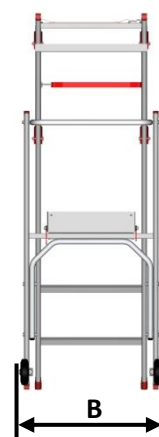
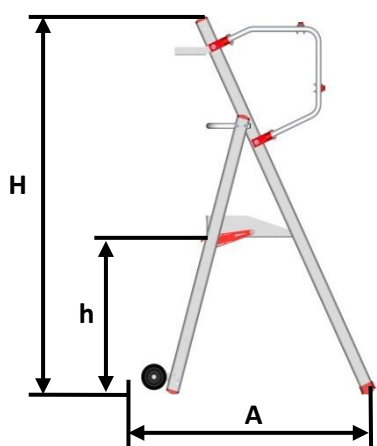


Reference	Description	Thickness, mm	Length, mm
<b>PIRL folding platform – overall width = 693 mm except 4 steps model = 908 mm</b>			
F090180002	PIRL folding platform 2 steps	300	1 722
F090180003	PIRL folding platform 3 steps		1 978
F090180004	PIRL folding platform 4 steps		2 144
F090180005	PIRL folding platform 5 steps		2 530
F090180006	PIRL folding platform 6 steps		2 806

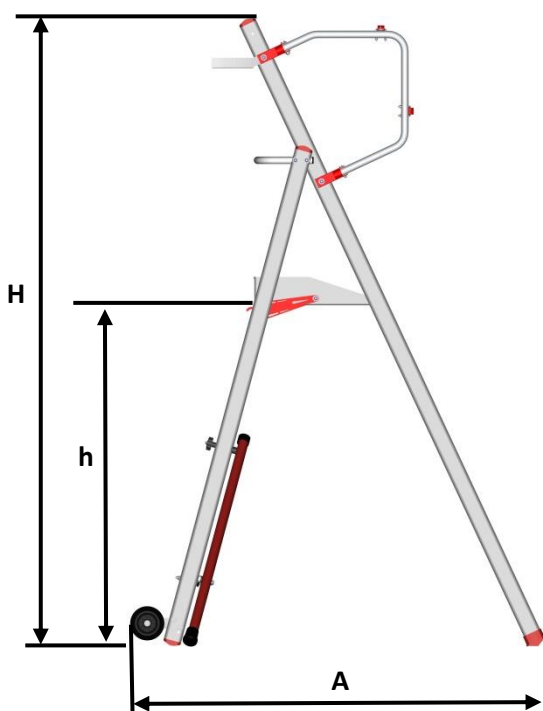
#### 4. RANGE AND TECHNICAL CHARACTERISTICS

Reference	Number of steps	Platform height H, mm	Working height, mm	Base dimensions outriggers closed AxB, mm	Base dimensions outriggers deployed AxB, mm	Overall height H, mm	Weight, kg
F090180002	2	500	2 500	969 x 693	-	1 547	13.40
F090180003	3	750	2 750	1 153 x 693	-	1 797	15.50
F090180004	4	900	2 900	1 264 x 908	-	1 947	15.90
F090180005	5	1 250	3 250	1 520 x 693	1 520 x 1 690	2 297	20.00
F090180006	6	1 500	3 500	1 704 x 693	1 704 x 1 690	2 547	21.50

2 to 4 steps models :



5 to 6 steps models :



## 5. PICTURES

2 steps model



3 steps model



4 steps model



5 steps model

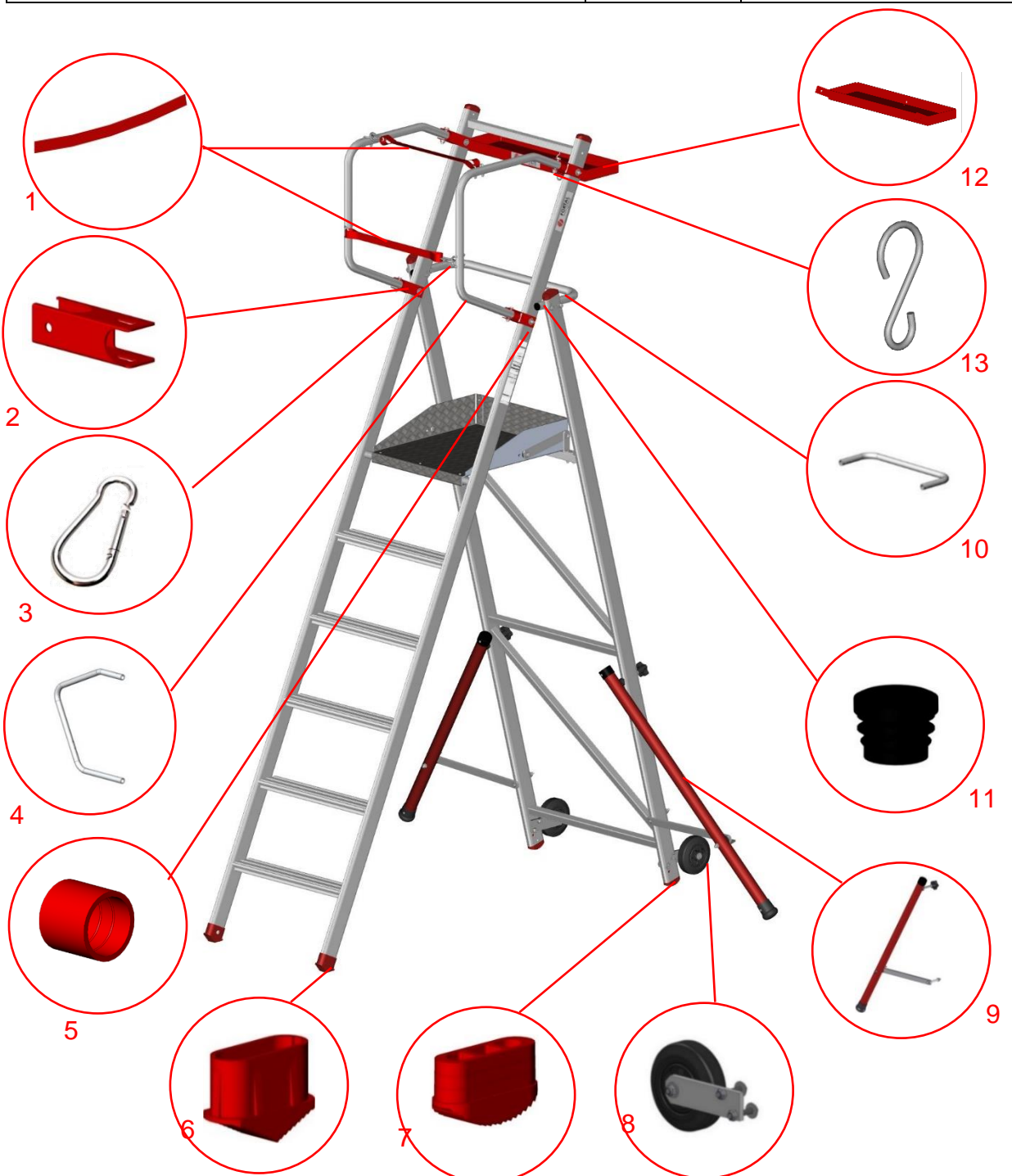


6 steps model



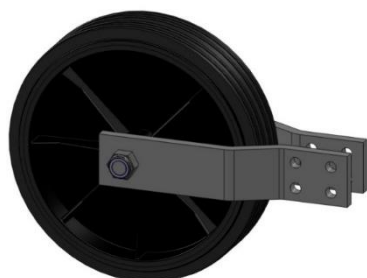
## 6. COMPONENTS LIST

Description	Nr.	Reference
Strap	1	A720040430
Safety rail support	2	Q704350005
Clasp for strap fixing	3	A710840060
Safety rail	4	R670790045
Red stopper for safety rail	5	A750030026
Sock foot pad 65x25 for front side	6	A750011015
Sock foot pad 65x25 for rear side	7	A750016527
Wheel kit Ø125 PIRL	8	F030091805
Outrigger	9	R880080070
Rear intermediary rail	10	R670790046
Stopper for rear intermediary rail	11	A750030025
Tool tray	12	R331030005
Bucket hook	13	A714100590

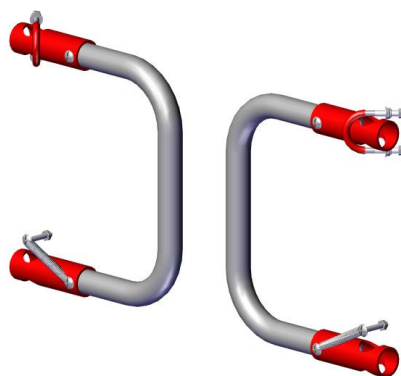


## 7. OPTIONS

**7.1** Wheel kit Ø200 + bracket + fastenings F030090005  
Can be set up in place of the original wheels Ø125



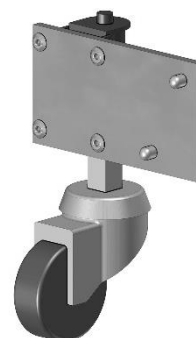
**7.2** Double security gates R880030400 (to choose when ordering)



**7.3** Lifting kit F030091810 (2 pieces)



**7.4** Push-up casters kit (4 pieces)



## 8. SAFETY TIPS

### Maximum working load: 1 person 150 kg

Before each use of the PIRL platform, verify by visual inspection the following:

- Good state of the PIRL platform and its accessories
- Crimping (assemblies between stiles and pads)
- Wear or lack thereof pads
- Possible presence of deformations of the elements
- Sound condition of welds
- Presence of the product identification label (attached to one of the rung)
- For replacement of some elements, use only original FORTAL elements.

### Tips for optimal use:

- Surfaces of use must be flat and not slippery
- The climb and descend of the platform always be done from the front
- Use suitable footwear providing safe support
- Nevers climb on the guardrails
- Never climb on the tool tray.

### Maintenance:

Clean regularly with a rag the sliding parts to avoid damaging the guiding system.

## 9. WARRANTY

FORTAL guarantees its own manufactured products (excepting specific clauses accepted by the customer and FORTAL) for a period of 2 years from the delivery date (date given on the delivery slip) against all manufacturing defects, with the exception of :

- Labour costs and travelling costs
- Wear and tear due to impacts, a lack of maintenance, choks, etc
- Use in inappropriate conditions or conditions that do not comply with those defined herein or installations that do not comply with the user installation instructions.

Any other compensation is formally excluded from the warranty, including operating loss, damage incurred and any prejudice whatsoever subsequent to using our manufactured products.

Any modification, repair or replacement of parts during the warranty period does not extend the period of cover.

Should our manufactured products be modified outside our production site without our prior written agreement, FORTAL's liability cannot be incurred.