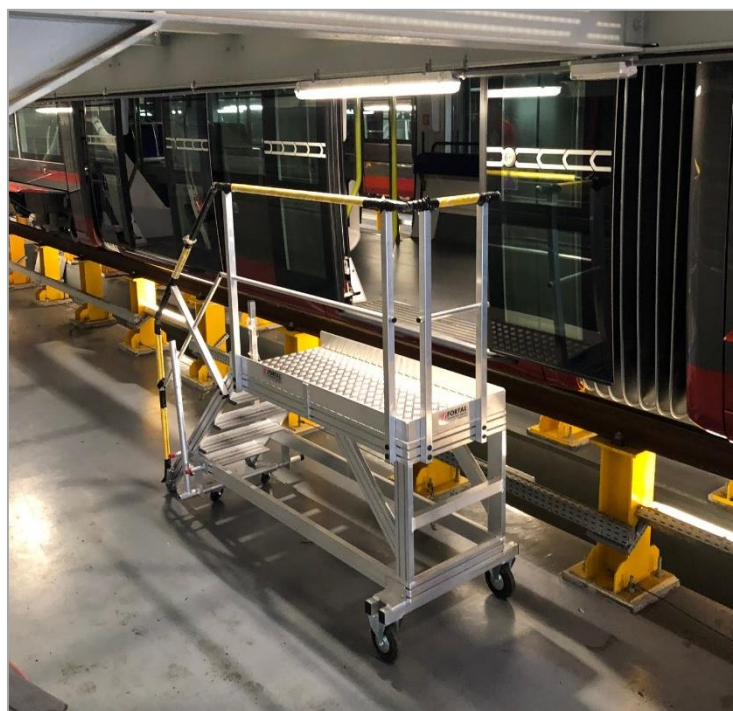


Accesses for tram maintenance operations



Mobile platform for door access

Capacity of load: 150 kg – 1 people

Main structure: raw extruded aluminum profil 100 x 30 mm

Height to serve: 1 100 mm

Access staircase useful width: 600 mm

Anti-slip ribbed aluminum steps – depth: 230 mm

Platform size: 660 x 1 600 mm – coating: checkered aluminum flat sheet – thickness 4.4 mm

Fixed wheels Ø 200 mm at rear – wheels with rubber tyres at front

Platform equipped with lever control for easy moving

