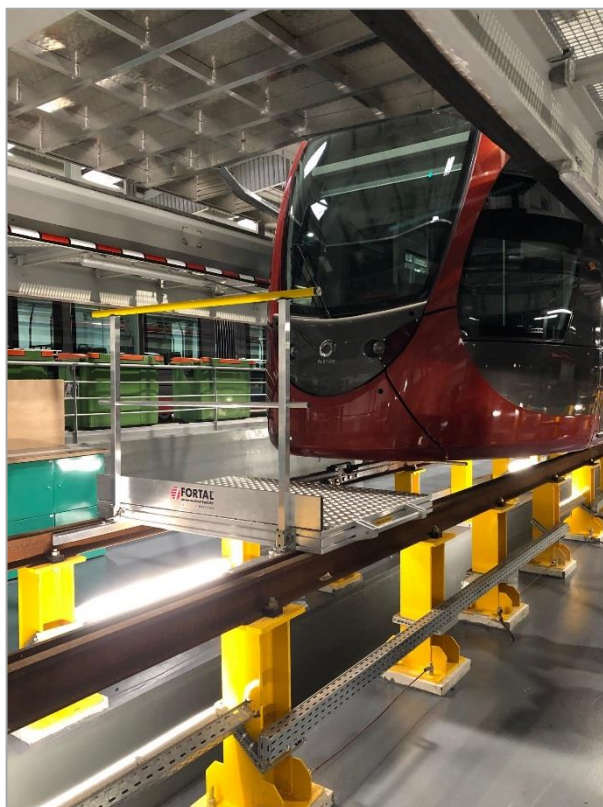


Accesses for tram maintenance operations



Platform mounted on rail for tram nose access

Capacity of load: 200 kg/m² – 1 people.

Main structure: raw extruded aluminum profil 100 x 30 mm.

Platform size: 1200 x 1600 mm – coating: checkered aluminum flat sheet – thickness 4.4 mm

Removable guardrail with yellow lacquered handrail (RAL 1023), intermediary rail and baseboard.

Handle and wheels for easy moving.

