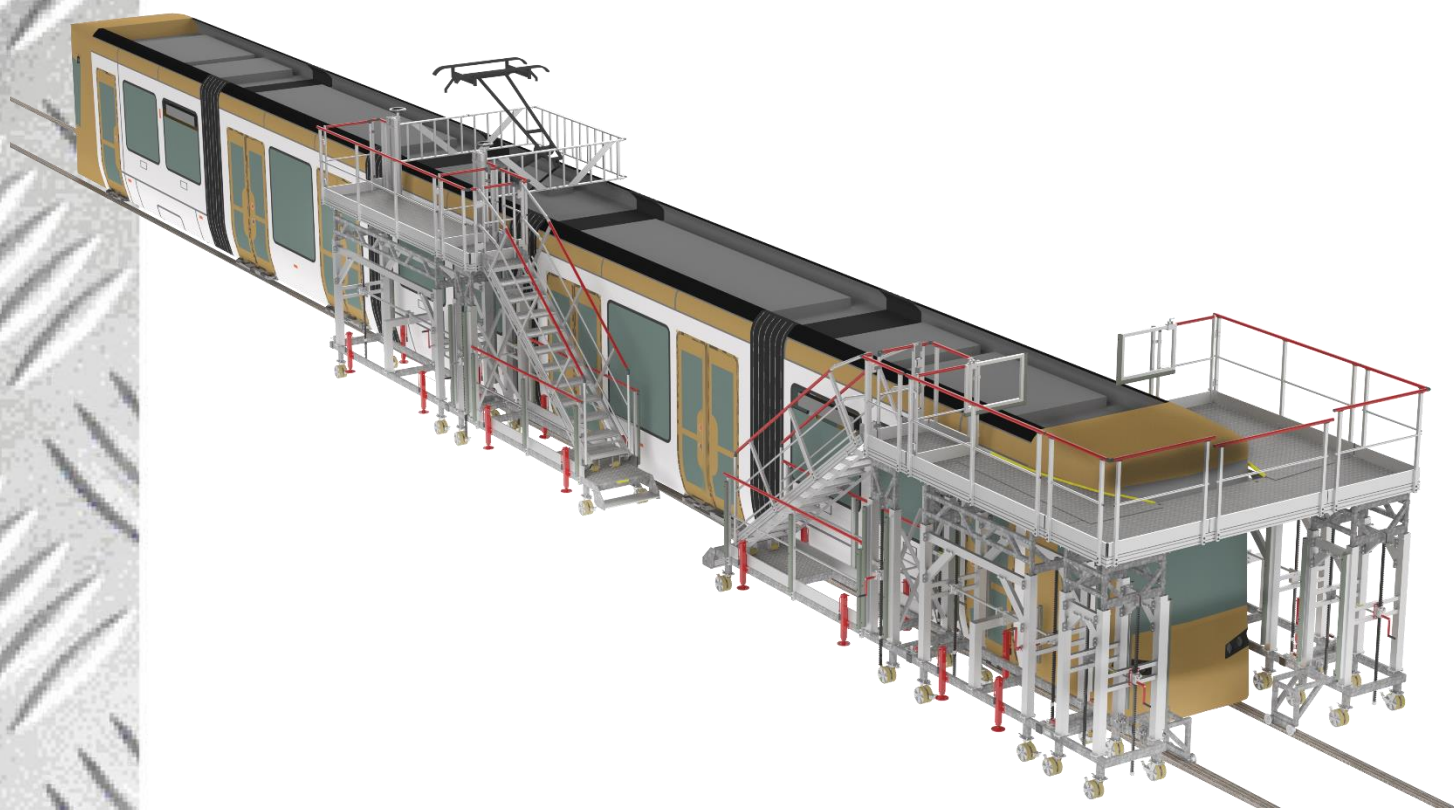


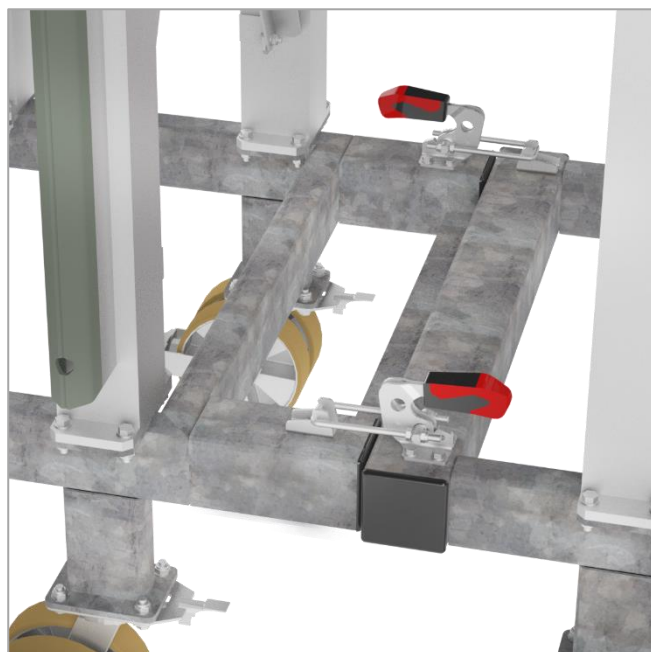
Platforms for tramway maintenance



Set of 3 platforms for maintenance of different tramway models: a frontal unit – a lateral working unit – an access unit. All units are adjustable in height.
Capacity of load: 2 people - 250 kg.

 **FORTAL**[®]
www.fortal.fr
DIVISION TRANSPORT  Made in France

Platforms for tramway maintenance



Link for units assembly

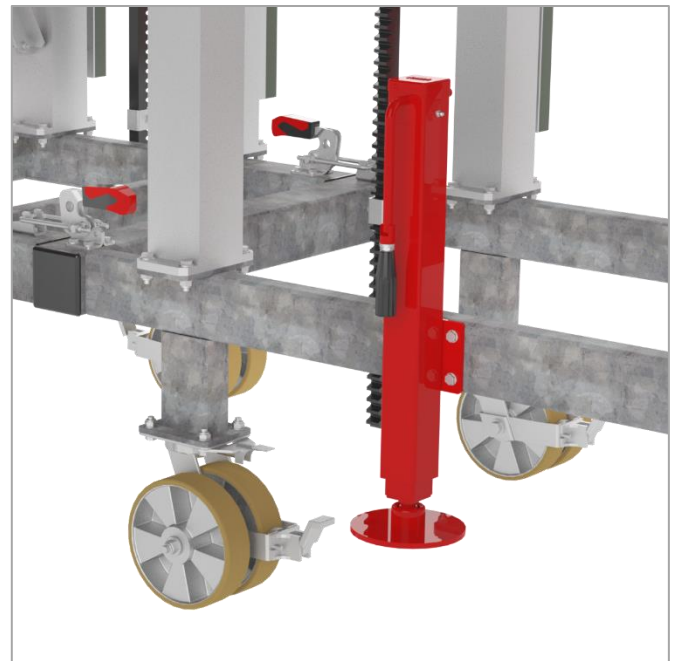


The frontal unit is composed of 3 platforms and a access staircase:

- Front platform adjustable in height from 2 800 to 3 815 mm with winch
- Access staircase and 2 lateral platforms adjustable in height from 2 800 to 3 500 mm
- Templates system allow to adapt access height to differents tramway models
- Galvanised steel frame
- Twin wheels with brakes Ø 200 mm for use in workshop and displacement over rails.
- Twin outriggers
- Supply and installation of:
 - a outler and an electric extension on reel
 - A outler and a pneumatic extension



Platforms for tramway maintenance



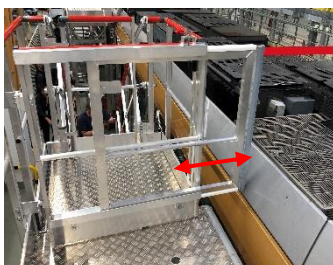
Twin wheels with brakes for use in workshop or displacement over rails and red lacquered outriggers.

Flat sheet checkered aluminum platform thickness 4.4 mm. Cutting in shape of train with anti-shock protection.

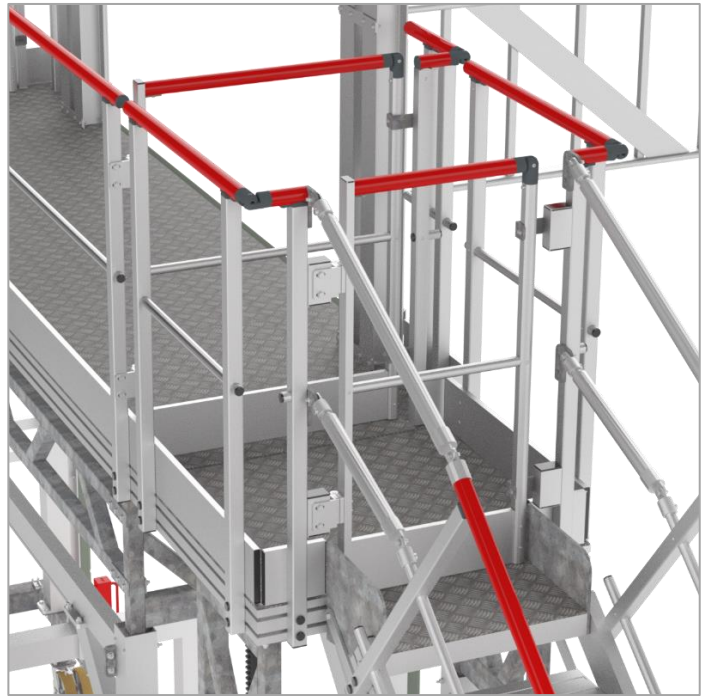


Platform is secure thanks to a peripheral guardrail composed of red lacquered handrail, intermediary rail and baseboard.

Front end guardrail are equipped with a telescopic extension adaptable according tram width



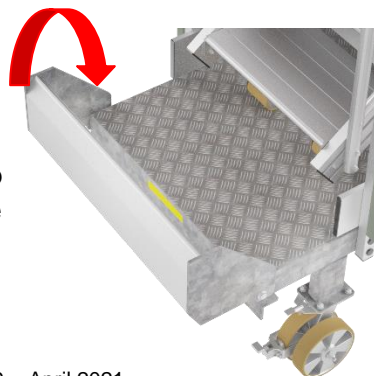
Platforms for tramway maintenance



Safety gate on staircase access upper platform

Mobile access staircase with landing platform and variable angle:

- Allow to access on front unit and lateral working unit
- Adjustable in height from 2 650 to 3 500 mm thanks to twin winch
- The steel frame is equipped on lower part of centering system and link for units assembly
- Checkered flat sheet aluminum depth 230 mm
- Displacement thanks to 4 pairs of twin wheels with brakes \varnothing 200 mm
- Outriggers
- Guardrail with red lacquered handrail, intermediary rail and baseboard
- Landing platform with safety gate on the staircase upper



The first step is retractable

F892000507 to 509 – April 2021

 **FORTAL**[®]
www.fortal.fr
DIVISION TRANSPORT  Made in France

Head Office & Plants : ZI du Muckental – F – 67140 BARR
Phone +33(0)3 88 58 53 53 – Fax +33(0)3 88 58 53 54
www.aeronautique.fortal.fr/en – info@fortal.fr

Platforms for tramway maintenance



Adjustable in height from 2 800 to 3 815 mm with winch

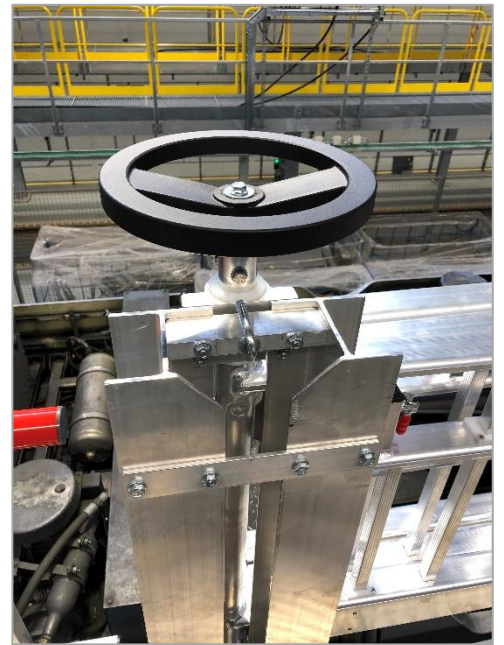
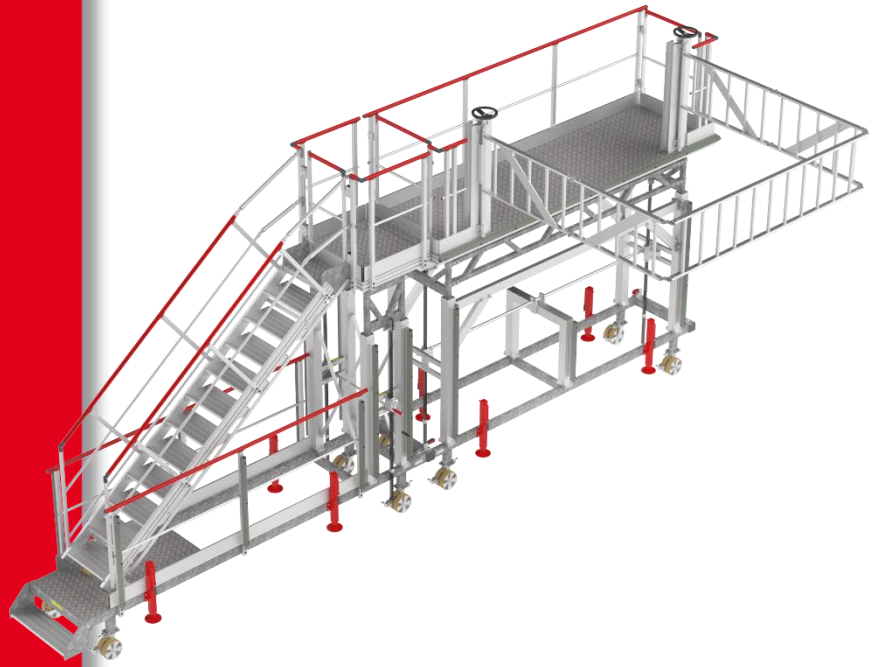


Lateral working unit with galvanised steel frame:

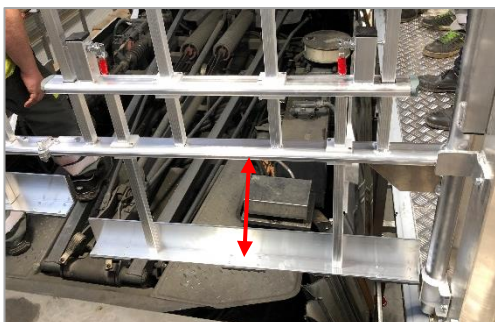
- Accessible thanks to the access staircase (descriptive on previous page)
- Displacement thanks to 6 pairs of twin wheels with brakes \varnothing 200 mm
- Guardrail with red lacquered (RAL 3000) handrail, intermediary rail and baseboard. Safety gates on each platform end.
- Articulated guardrail deployable on one side – size 3.5 x 2.1 m – can be locked on two positions (folded and deployed) – composed of rail, intermediary rails – sliding lower part.



Platforms for tramway maintenance



The guardrail opening/closing above maintenance area is easy thanks to 2 steering wheels operated simultaneously.
The maintenance operators have an area of about 25 m² to intervene safely.



The guardrail, when deployed, is sliding down for fills the distance with the top of the tram and ensure the safety of maintenance operators.

