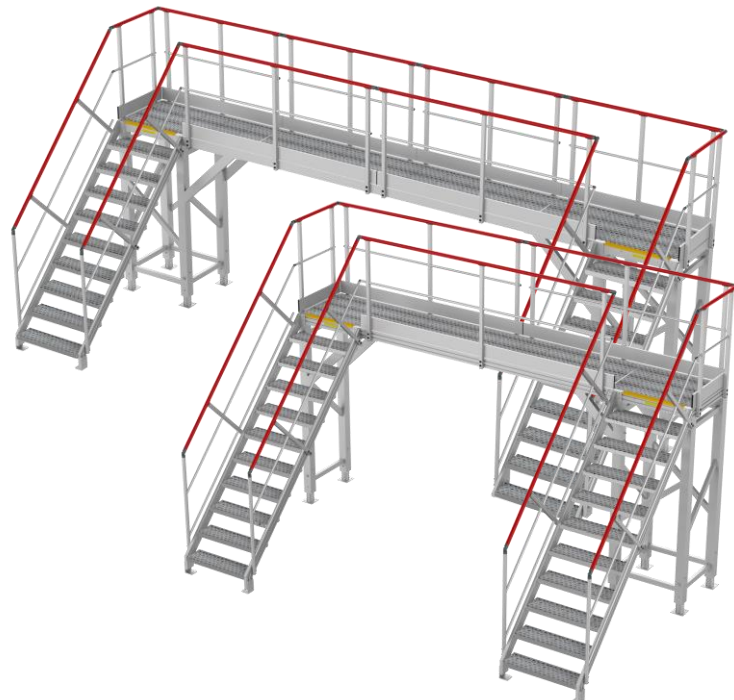


# Set of accesses and platforms to secure an oil port



Double access staircases in extruded aluminum profile 100 x 30 mm series 6000 for pipe crossing.

#### Staircase

- Height under platform: 2200 mm and 1920 mm
- Staircases tilt: 45 °
- Anti-slip ribbed aluminum steps - Last steps with yellow anti-slip step nozing

#### Landing

- Width: 800 mm – Length: 5045 / 7000 mm
- Coating: grating

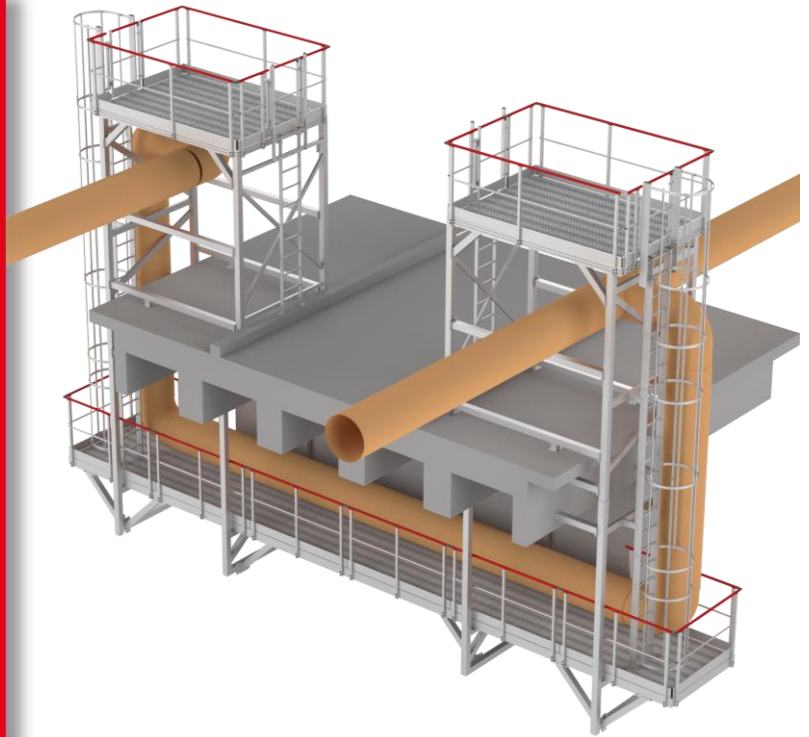
#### Guardrail

- Ramps with red lacquered handrail (RAL 3000), and intermediary rail
- Guardrail with red lacquered handrail (RAL 3000), intermediary rail and baseboard.

Capacity of load: 200 kg/m<sup>2</sup>

 **FORTAL**<sup>®</sup>  
**www.fortal.fr**  
DIVISION INDUSTRIE  Made in France

# Set of accesses and platforms to secure an oil port



Gangway for access above and below pipes in extruded aluminum profile 100 x 30 mm series 6000.

2<sup>nd</sup> level:

- Height to serve: 2700 mm
- Width: 2060 mm – Length : 3200 mm
- Coating: grating
- Access by safety cage ladder – safety gate at the landing entrance
- Peripheral guardrail with red lacquered handrail (RAL 3000), intermediary rail and baseboard.

 **FORTAL**<sup>®</sup>  
[www.fortal.fr](http://www.fortal.fr)  
DIVISION INDUSTRIE  Made in France

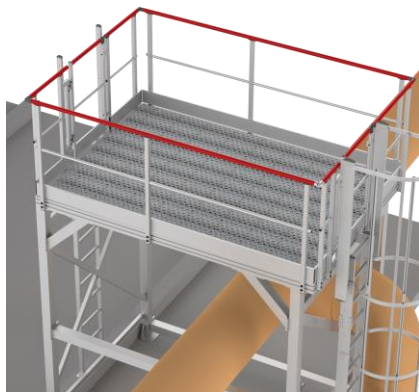
F892000402 – march 2022

Head Office & Plants : ZI du Muckental – F – 67140 BARR  
Phone +33(0)3 88 58 53 53 – Fax +33(0)3 88 58 53 54  
[www.fortal.fr/en](http://www.fortal.fr/en) – [info@ortal.fr](mailto:info@ortal.fr)

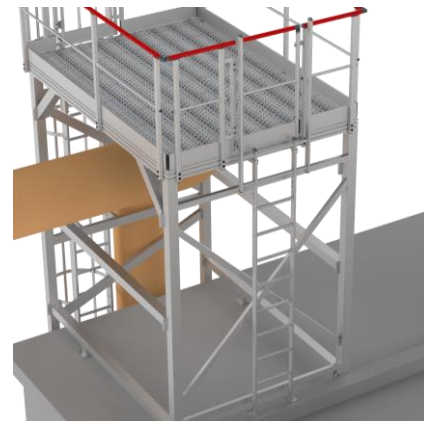
# Set of accesses and platforms to secure an oil port

## 1st level:

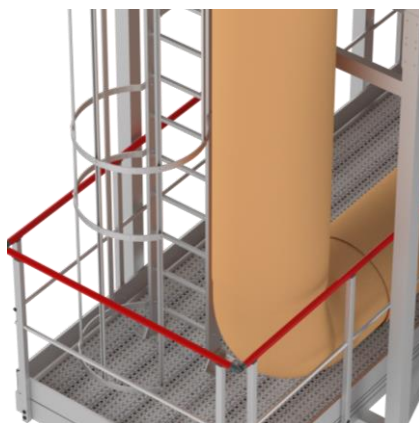
- Width: 1500 mm – Length: 11400 mm
- Coating: grating
- Access with descending safety cage ladder with side exit - safety gate at the landing entrance
- Peripheral guardrail on three sides with red lacquered handrail (RAL 3000), intermediary rail and baseboard.



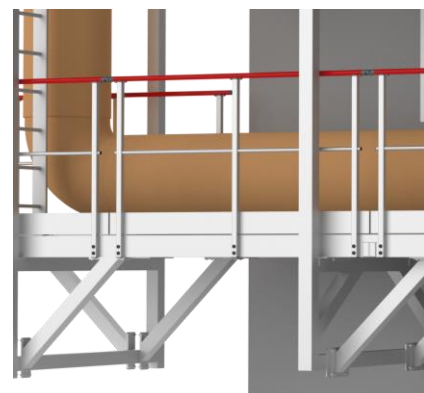
Peripheral guardrail



Secured access to 2<sup>nd</sup> level by  
ladder and safety gate

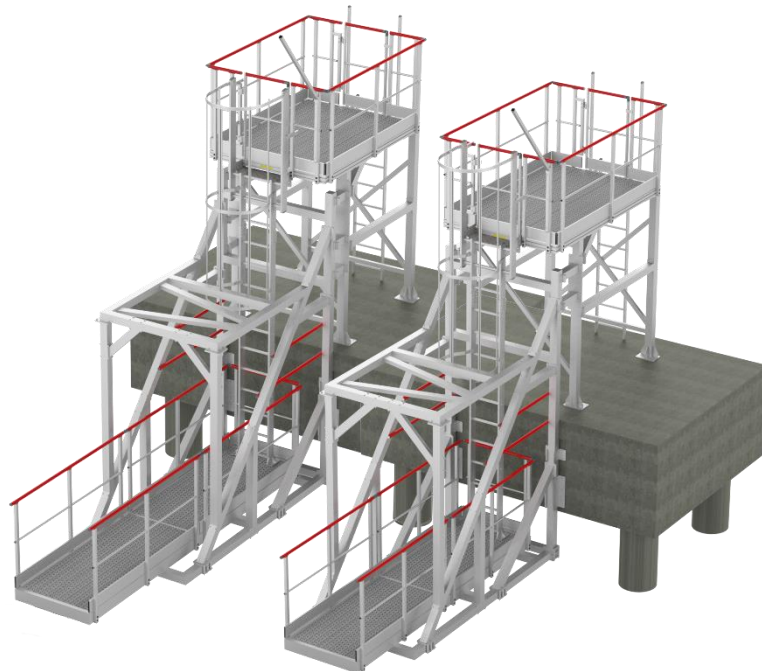


Secured access to 1st level with  
safety cage ladder with lateral  
exit and safety gate.



Console for side mounting on  
the 1<sup>st</sup> level

# Set of accesses and platforms to secure an oil port



## 2<sup>nd</sup> level:

- Height to serve: 2400 mm
- Width: 1660 mm – Length: 2600 mm
- Coating: grating
- Access by ladder – safety gate at the landing entrance
- Peripheral guardrail with red lacquered handrail (RAL 3000), intermediary rail and baseboard.

## 1st level:

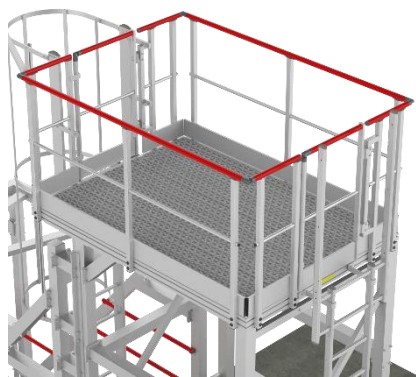
- Width: 1060 mm – Length: 4100 / 4600 mm
- Coating: grating
- Access with descending safety cage ladder - safety gate at the landing entrance
- Peripheral guardrail on three sides with red lacquered handrail (RAL 3000), intermediary rail and baseboard.

Platform for “duc-d’albe” access in extruded aluminum profile section 100x30 mm series 6000.



 **FORTAL**<sup>®</sup>  
[www.fortal.fr](http://www.fortal.fr)  
DIVISION INDUSTRIE  Made in France

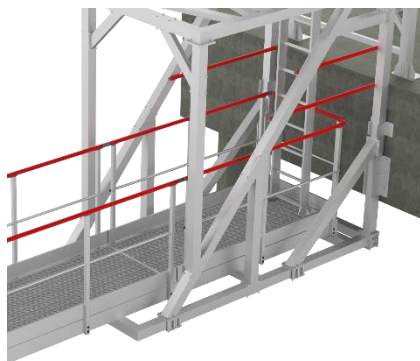
# Set of accesses and platforms to secure an oil port



Peripheral guardrail



Secured access to 1st level by safety cage ladder and safety gate.



2<sup>nd</sup> level supported with aluminum profiles.



Secured access to 2<sup>nd</sup> level by ladder and safety gate

 **FORTAL**<sup>®</sup>  
[www.fortal.fr](http://www.fortal.fr)  
DIVISION INDUSTRIE  Made in France

# Set of accesses and platforms to secure an oil port



Fire gun access platform in extruded raw aluminum profile 100 x 30 mm series 6000 for pipe crossing.

#### Staircase

- Height to serve: 2400 mm

#### Landing

- Access by safety cage ladder – safety gate at the entrance
- Width: 1660 mm – Length: 2200 mm
- Coating: grating

#### Guardrail

- Peripheral guardrail with red lacquered handrail (RAL 3000), intermediary rail and baseboard.

Capacity of load: 200 kg/m<sup>2</sup>

F892000400 – march 2022

 **FORTAL**<sup>®</sup>  
**www.fortal.fr**  
DIVISION INDUSTRIE  Made in France

Head Office & Plants : ZI du Muckental – F – 67140 BARR  
Phone +33(0)3 88 58 53 53 – Fax +33(0)3 88 58 53 54  
www.fortal.fr/en – info@ortal.fr