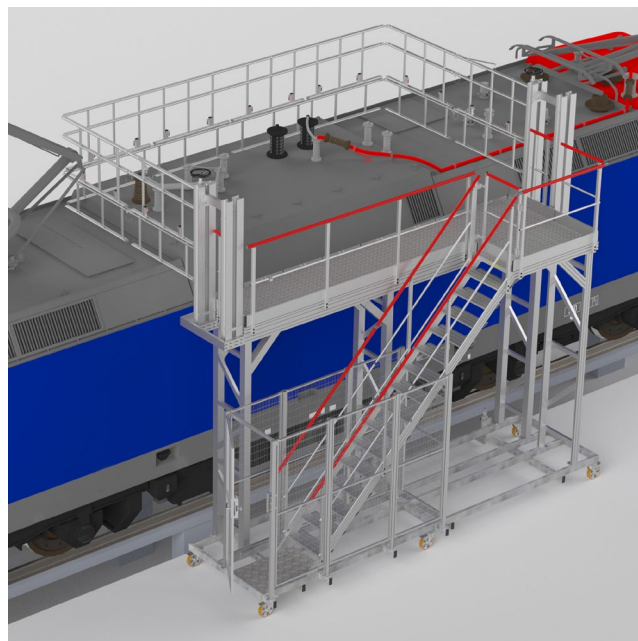


Set of platforms for train maintenance center



3D view mobile platform for roof access



Mobile platform for train roof access.
Galvanized steel frame – Main
structure in extruded raw aluminum
profiles 100x30 mm.

Capacity of load: 300 kg

F892100759 – May 2022

 **FORTAL**[®]
www.fortal.fr
DIVISION TRANSPORT  Made in France

Head Office & Plants : ZI du Muckental – F – 67140 BARR
Phone +33(0)3 88 58 53 53 – Fax +33(0)3 88 58 53 54
www.aeronautique.fortal.fr/en – info@ortal.fr

Set of platforms for train maintenance center



3D view security door and side mesh walls

Frame

- Platform: width: 800 mm x length: 1 500 mm
- Platform coating: aluminum flat sheet thickness 4.4 mm
- Wheels Ø200 mm with brakes – guiding facility over 100 metres length
- Security door with side mesh walls

Access staircase

- Height to serve: 3 600 mm
- Staircase tilt: 45°
- Useful width: 730 mm
- Anti-slip steps- depth 261 mm
- Ramp on the right and left of the staircase
- Self-closing security door at the top of the staircase

Working platform

- Width: 1 200 mm x length: 6 000 mm
- Coating: flat sheet aluminum thickness 4.4 mm
- Draw-out extension with 500mm travel designed to conform perfectly the shape of the train
- Rubber protection on train side
- On three sides: guardrail composed of red lacquered handrail (RAL 3000), intermediary rail and baseboard

Capacity of load: 300 kg

F892100759 – May 2022

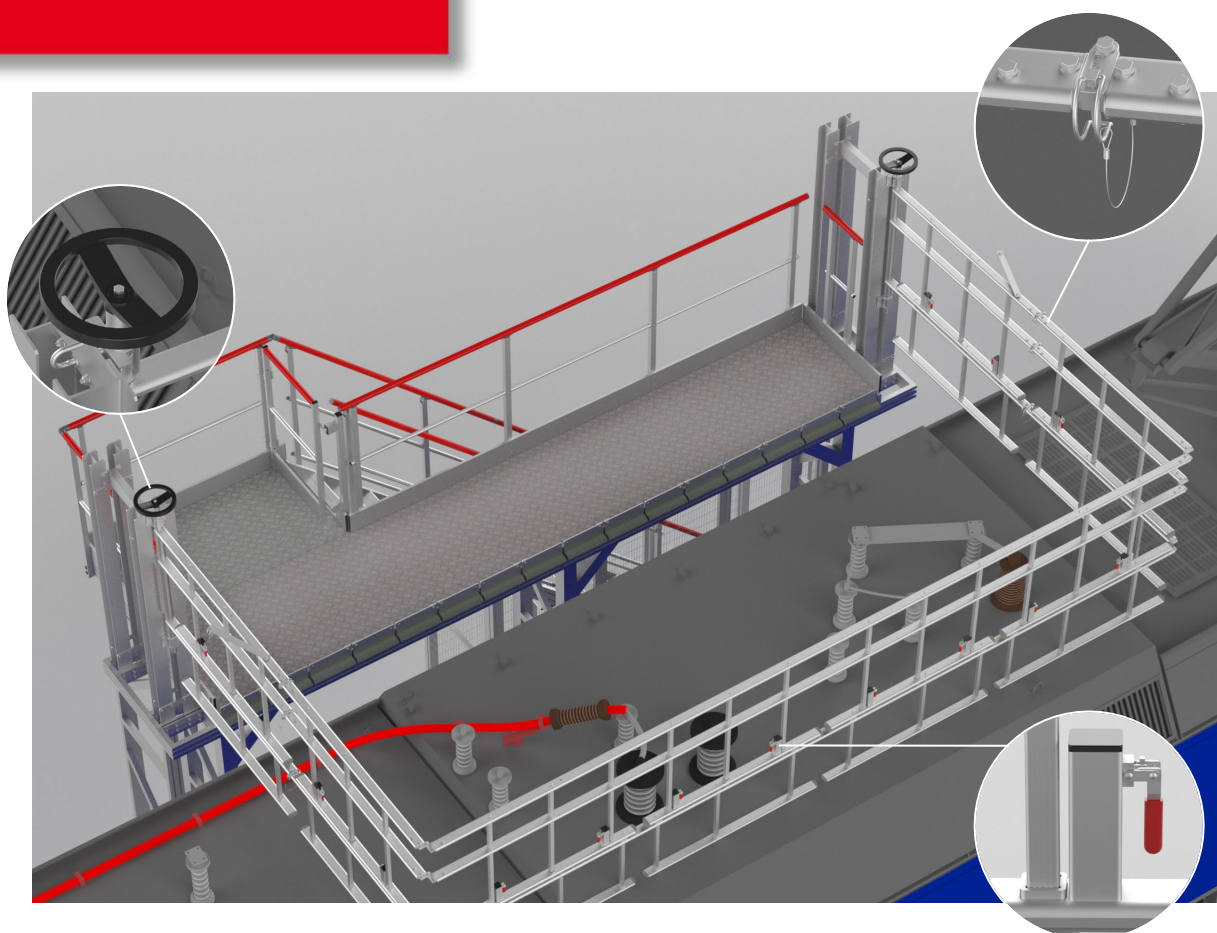
 **FORTAL**[®]
www.fortal.fr
DIVISION TRANSPORT  Made in France

Head Office & Plants : ZI du Muckental – F – 67140 BARR
Phone +33(0)3 88 58 53 53 – Fax +33(0)3 88 58 53 54
www.aeronautique.fortal.fr/en – info@ortal.fr

Set of platforms for train maintenance center



Articulated guardrail deployed on the train roof

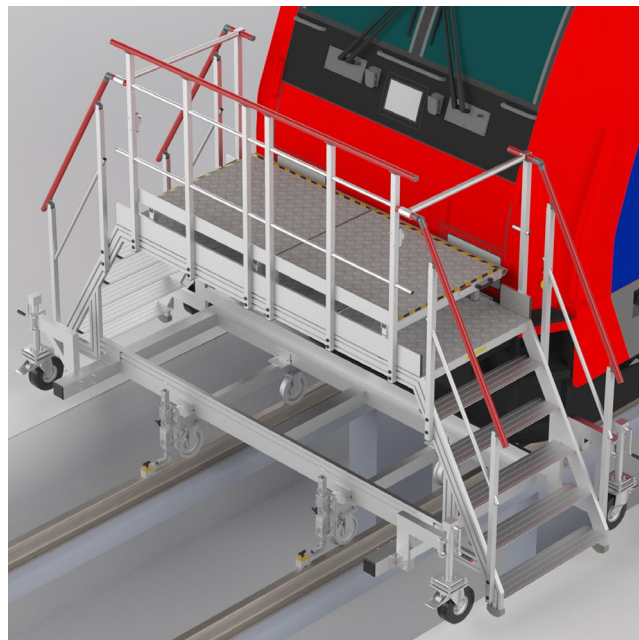


Foldable guardrail

- Articulated and foldable guardrail on the train roof to ensure a safe working area (width 2700 x length 5340 mm) for operators – set up thanks to steering wheels.
- Clip pin to lock the guardrail when deployed.
- For maximum safety and fill the distance with the top of the train, the guardrail is adjustable in height. Quick locking system ensure that the sliding part held in position.



Set of platforms for train maintenance center



3D view mobile platform windshield access with risers in use position

Double access mobile platform for train windshield access. Main structure in extruded raw aluminum profiles 100x30 mm.



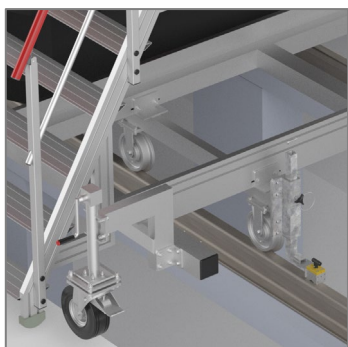
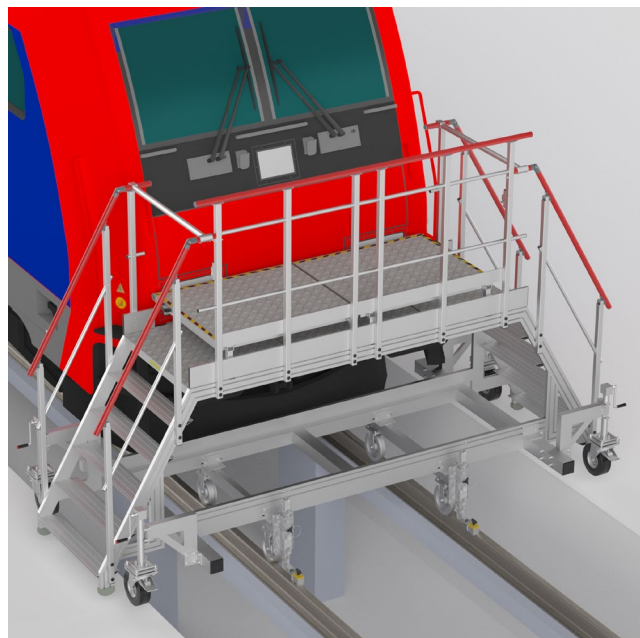
Capacity of load: 200 kg

F892100762 – Mai 2022

 **FORTAL**[®]
www.fortal.fr
DIVISION TRANSPORT  Made in France

Head Office & Plants : ZI du Muckental – F – 67140 BARR
Phone +33(0)3 88 58 53 53 – Fax +33(0)3 88 58 53 54
www.aeronautique.fortal.fr/en – info@ortal.fr

Set of platforms for train maintenance center



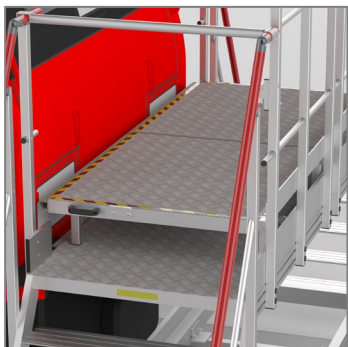
Frame

- 4 wheels Ø 200 mm mounted on outriggers with handles
- 4 flanged wheels Ø 200 mm for rail guidance
- 2 magnetic blocks for immobilization on rails



Access staircase

- Height to serve: 1 500 mm / 1750 mm with risers
- Tilt: 60°
- Useful width: 940 mm
- Anti-slip steps- depth 180 mm
- Ramps on the right and left of the staircase
- Folding security bar at the top of the staircase



Working platform

- Width: 1 000 mm x length: 2 766 mm
- Coating: aluminum flat sheet thickness 4.4 mm
- Rubber protection on train side
- 2 folding parts 1000 x 1000 mm height 250 mm with black/yellow safety bands.
- On one side: guardrail composed of red lacquered handrail (RAL 3000), intermediary rail and baseboard



Set of platforms for train maintenance center



3D view mobile platform for door access

Mobile platform for train door access. Main structure in extruded raw aluminum profiles 100x30 mm.



Access staircase

- Height to serve: 600 mm
- Tilt: 40°
- Useful width: 740 mm
- Anti-slip steps - depth 261 mm
- Ramp on the right and left of the staircase
- Security door at the top of the stairs

Working platform

- Width: 1160 mm x length: 1800 mm
- Coating: aluminum flat sheet thickness 4.4 mm
- Rubber protection on train side
- On three sides: guardrail composed of red lacquered handrail (RAL 3000), intermediary rail and baseboard

Frame

- Wheels Ø 200 mm polyurethane tyres
- Counterweight

Capacity of load: 150 kg

F892100767 – May 2022

 **FORTAL**[®]
www.fortal.fr
DIVISION TRANSPORT  Made in France

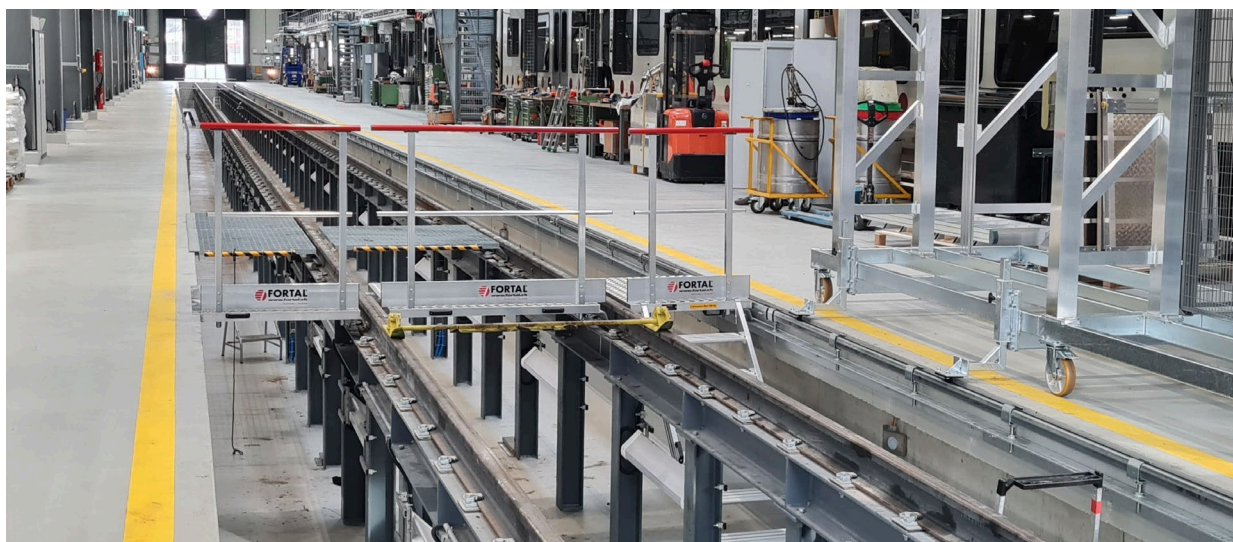
Head Office & Plants : ZI du Muckental – F – 67140 BARR
Phone +33(0)3 88 58 53 53 – Fax +33(0)3 88 58 53 54
www.aeronautique.fortal.fr/en – info@ortal.fr

Set of platforms for train maintenance center



3D view of the removable staircase on the platform

Gangway for rail passage with removable guardrail and removable staircase for descent into the pit. Main structure in extruded raw aluminium profiles 100x30 mm.



Platforms

- Width: 1 240 mm x length: 1 000 / 1 500 mm
- Rollers Ø 50 mm and handles for easy movement
- Coating: aluminum flat sheet thickness 4.4 mm

Removable guardrails

- Removable guardrail composed of red lacquered handrail (RAL 3000), intermediary rail and baseboard

Capacity of load: 300 kg

Access staircase

- Height to serve: 1 600 mm
- Tilt: 45°
- Useful width: 600 mm
- Anti-slip steps - depth 230 mm
- Hooks on the upper part for fixing on a platform – Rubber pads in the lower part
- Handles for easy handling



Set of platforms for train maintenance center



Capacity of load: 300 kg

F892100768 / 769 / 770 – May 2022

 **FORTAL**[®]
www.fortal.fr
DIVISION TRANSPORT  Made in France

Head Office & Plants : ZI du Muckental – F – 67140 BARR
Phone +33(0)3 88 58 53 53 – Fax +33(0)3 88 58 53 54
www.aeronautique.fortal.fr/en – info@ortal.fr