

FORTAL SOLUTIONS FOR SECURE HEIGHT-ACCESS

PRICE LIST 2023

Stepladders - Step stools
- Platforms - Simple and
double access staircases -
Mobile scaffolds - Ladders

Applicable from July 1st, 2022
and until further notice*



*Depending on the fluctuation of the price of raw materials, this price list can be modified without notice



FORTAL[®]
www.fortal.fr

🇫🇷 Made in France

Fixed stepladders

Simple access stepladder SOLIDE

Complies with standard EN 131

Simple access step stools, foldable, specially designed for intensive professional use - Aluminum structure, surface-treated with a transparent polyester coating avoid staining the user's hands.



Reference	Number of steps	Platform height mm	Working height mm	Folded overall length mm	Ground overcrowding, mm L x l.	Weight kg	Price €
F050820003	3	660	2660	1240	730 x 450	5.80	190.80
F050820004	4	890	2890	1470	870 x 480	6.80	204.50
F050820005	5	1120	3120	1700	1090 x 520	7.20	231.90
F050820006	6	1350	3350	1930	1160 x 550	8.50	259.40
F050880007	7	1750	3750	2600	1750 x 630	12.00	346.30
F050880008	8	2000	4000	2850	2000 x 670	13.00	410.00
F050880010	10	2500	4500	3350	2500 x 740	16.00	507.20
F050880012	12	3000	5000	3850	3000 x 810	22.00	601.90

Double access stepladder SOLIDE

Complies with standard EN 131

Soldered and riveted anti-slip ribbed aluminum, depth 100 mm - Platform with hinge



Reference	Number of steps	Platform height mm	Working height mm	Folded overall length mm	Ground overcrowding, mm L x l.	Weight kg	Price €
F050870002	2 x 2	500	2500	590	600 x 460	4.00	197.90
F050870003	2 x 3	750	2750	860	850 x 490	6.00	225.00
F050870004	2 x 4	1000	3000	1130	1150 x 530	7.50	264.50
F050870005	2 x 5	1250	3250	1400	1400 x 570	9.50	325.00
F050870006	2 x 6	1500	3500	1670	1650 x 600	11.50	364.60
F050870008	2 x 8	2000	4000	2210	2200 x 660	16.00	479.00
F050870010	2 x 10	2500	4500	2750	2750 x 740	20.50	551.10
F050870012	2 x 12	3000	5000	3290	3300 x 810	25.00	692.20

Professional double access stepladder EPF

Complies with standard EN 131

Professional stepladder with anti-slip ribbed aluminum steps on each side, depth 85 mm - Step / profile assembly with triple expansion and anti-rotation square crimping - Cast aluminum connexions - Anti-slip ribbed platform, size : 250 x 260 mm



Reference	Number of steps	Platform height mm	Overall height mm	Ground overcrowding mm, L x l.	Folded thickness mm	Folded width mm	Working height mm	Folded height mm	Weight kg	Price €
F050910002	2 x 2	570	570	550 x 410	155	410	1820	620	3.00	120.50
F050910003	2 x 3	800	800	720 x 440	155	440	2050	870	5.00	127.40
F050910004	2 x 4	1030	1030	900 x 470	155	470	2280	1120	7.00	144.40
F050910005	2 x 5	1300	1300	1130 x 500	155	500	2550	1410	7.30	161.30
F050910006	2 x 6	1540	1540	1250 x 535	155	535	2790	1660	7.60	181.10
F050910007	2 x 7	1760	1760	1440 x 560	155	560	3010	1900	8.70	214.90

Professional simple access stepladders EF and EPF

Complies with standard EN 131

Anti-slip ribbed aluminum one-piece steps, depth 85 mm - Link between steps and profiles by square crimping - Shelf-locking tie-rod - Tools holder tablet with hook to hang bucket - Anti-slip ribbed cast aluminum platform - Resistance tested with 260 kg - Load capacity : 150 kg - EF profile : 50 x 24 mm - EPF profile : 60 x 24 mm



Professional stepladder EF

Reference	Number of steps	Platform height mm	Working height mm	Overall height mm	Folded overall length mm	Ground overcrowding, mm - L x l.	Weight kg	Price €
F050800003	3	650	2650	1250	1380	650 x 440	4.50	104.90
F050800004	4	885	2885	1485	1620	810 x 470	5.20	110.60
F050800005	5	1120	3120	1720	1880	970 x 500	6.80	117.50
F050800006	6	1360	3360	1960	2120	1130 x 530	7.50	141.60
F050800007	7	1590	3590	2190	2370	1330 x 560	8.30	164.10
F050800008	8	1825	3825	2425	2620	1400 x 590	9.50	186.70

Professional stepladder EPF

Reference	Number of steps	Platform height mm	Overall length mm	Ground overcrowding, mm L x l.	Folded thickness mm	Working height mm	Folded height mm	Weight kg	Price €
F050900009*	9	2050	2650	1640 x 620	140	4050	2870	12.00	388.80
F050900010*	10	2280	2880	1840 x 650	140	4280	3120	13.00	421.20
F050900011*	11	2520	3120	1990 x 680	140	4520	3370	14.00	463.60

*These references are equipped with 2 ramps mounted on each side

Step stools

Foldable step stool MPSA

Load capacity: 150 kg - 1 person

Aluminum simple access step stool - Front guardrail - Working platform 400 x 400 mm - Non marking rubber pads Model with ribbed aluminum steps (depth: 180 mm) - Model with grating steps (depth: 200 mm)

Option : Push-up rollers



Ribbed aluminum steps

Grating steps

Ribbed aluminum steps

Reference	Number of steps	Platform height mm	Working height mm	Folded overcrowing, mm	Ground overcrowing, mm L x l.	Weight kg	Price €
F050330002	2	450	2450	955	756 x 585	7.90	336.50
F050330003	3	680	2680	1230	977 x 585	8.60	350.20
F050330004	4	900	2900	1505	1197 x 585	9.60	398.30

Grating steps

Reference	Number of steps	Platform height mm	Working height mm	Folded overcrowing, mm	Ground overcrowing, mm L x l.	Weight kg	Price €
F050331002	2	450	2450	955	756 x 585	8.90	401.50
F050331003	3	680	2680	1230	977 x 585	11.00	440.20
F050331004	4	900	2900	1505	1197 x 585	13.20	513.30

Double access step stool EPDA - one-piece

Load capacity: 150 kg - 1 person

Anti-slip ribbed aluminum steps, depth 80 mm - Link between steps and profiles by crimping - Anti-slip ribbed platform, size 270 x 250 mm

Option : Push-up rollers



Reference	Number of steps	Platform height mm	Working height mm	Ground overcrowing, mm L x l.	Weight kg	Price €
F050250002	2	450	2450	790 x 390	4.50	226.70
F050250003	3	680	2680	1050 x 420	5.50	267.90
F050250004	4	900	2900	1310 x 450	7.00	315.90

Simple access step stool EPSA - one-piece

Load capacity: 150 kg - 1 person

Anti-slip ribbed aluminum steps, depth 80 mm - Link between steps and profiles by crimping - Anti-slip ribbed aluminum platform, size 510 x 450 mm - without rollers



Reference	Number of steps	Platform height mm	Working height mm	Ground overcrowing, mm L x l.	Weight kg	Price €
F050300001	1	220	2220	630 x 510	4.70	315.90
F050300002	2	450	2450	900 x 510	7.50	343.30
F050300003	3	680	2680	1050 x 510	8.00	384.50
F050300004	4	900	2900	1260 x 510	9.50	439.30

Access equipment at height for shelf-filling EMERA

Complies with standard FD E85-301

Load capacity: 150 kg - 1 person

Stepladder specially design for shelf-filling staff - Easy to use and move - Secure shelf-filling staff



Reference	Number of steps	Platform height mm	Working height mm	Ground overcrowing, mm L x l.	Weight kg	Price €
F881700063	2	500	2500	850 x 640	15.2	515.00

EPSA 230 step stool Simple access

Complies with standard EN 131

Load capacity: 150 kg

Aluminum structure - Ribbed aluminum working platform 460 x 500 mm - Model with ribbed aluminum steps (depth: 230 mm) - Model with grating steps (depth: 230 mm)

Options:

- Guardrail for left, right or rear side
- Handrail for left or right side
- Wheels kit Ø 125 mm (2 pieces)



3-steps model - ribbed aluminum - with options



4-steps model - ribbed aluminum



4-steps model - grating

Ribbed aluminum steps

Reference	Number of steps	Platform height mm	Working height mm	Ground overcrowing, mm L x l.	Weight kg	Price €
F050380002	2	450	2450	817 x 630	7.40	516.30
F050380003	3	675	2675	1077 x 680	11.40	557.40
F050380004	4	900	2900	1335 x 730	14.60	609.60

Grating steps

Reference	Number of steps	Platform height mm	Working height mm	Ground overcrowing, mm L x l.	Weight kg	Price €
F050381002	2	450	2450	817 x 630	8.10	591.30
F050381003	3	675	2675	1077 x 680	12.40	657.40
F050381004	4	900	2900	1335 x 730	15.60	734.60

Options

Reference	Designation	Weight kg	Price €
F030050038	Guardrail for left, right or rear side	2.50	85.90
F030050530	Handrail for left or right side 3 meters	1.10	52.30
F030050531	Handrail for left or right side 4 meters	1.50	52.30
R880090015	Wheels kit Ø 125 mm (2 pieces)	2.43	42.70
F030050532	Post (to be added when ordering a ramp without guardrail)	0.80	26.00

Delivered non mounted

Mobile stepladders

Mobile stepladder EMG 68 - one-piece

Complies with standard EN 131-7
Load capacity: 150 kg - 1 person

Simple access aluminum stepladder
- Design for intensive use for various indoor and outdoor tasks : shelf access, mezzanine, cleaning large vehicle and tasks in the industrial and construction sector - Available from 3 to 14 steps for working height from 2.75 to 5.50 m. Options : Lever control for easy moving - Tool holder tablet : see page 15



Reference	Number of steps	Platform height, mm	Working height, mm	Ground overcrowding, mm with stabilizers L. x l.		Overall height, mm	Weight kg	Price €
				closed	open			
F052050003	3	750	2750	1132 x 905	-	1818	29.6	743.20
F052050004	4	1000	3000	1233 x 905	1233 x 1560	2068	34.1	774.00
F052050005	5	1250	3250	1334 x 905	1334 x 1745	2318	36.9	958.50
F052050006	6	1500	3500	1435 x 905	1435 x 1745	2568	38.9	1040.40
F052050007	7	1750	3750	1536 x 905	1536 x 1745	2818	44.2	1141.70
F052050008	8	2000	4000	1637 x 905	1637 x 2317	3068	53.7	1245.30
F052050009	9	2250	4250	1738 x 905	1738 x 2317	3318	59.4	1369.70
F052050010	10	2500	4500	1839 x 905	1839 x 2317	3568	61.3	1497.80
F052050011	11	2750	4750	1940 x 905	1940 x 2895	3818	70.6	1569.50
F052050012	12	3000	5000	2041 x 905	2041 x 2895	4068	75.8	1703.90
F052050013	13	3250	5250	2142 x 905	2142 x 2895	4318	77.8	1755.20
F052050014	14	3500	5500	2243 x 905	2243 x 2895	4568	83.4	2389.40

Equipped with foldable stabilizer from 4 steps model.

Version with rear exit - right exit - left exit

Number of steps	Rear exit		Right exit		Left exit	
	Reference	Price €	Reference	Price €	Reference	Price €
3	F052090003	768.80	F052060003	768.80	F052061003	768.80
4	F052090004	799.60	F052060004	799.60	F052061004	799.60
5	F052090005	984.10	F052060005	984.10	F052061005	984.10
6	F052090006	1066.10	F052060006	1066.10	F052061006	1066.10
7	F052090007	1167.20	F052060007	1167.20	F052061007	1167.20
8	F052090008	1271.00	F052060008	1271.00	F052061008	1271.00
9	F052090009	1395.30	F052060009	1395.30	F052061009	1395.30
10	F052090010	1523.40	F052060010	1523.40	F052061010	1523.40
11	F052090011	1595.10	F052060011	1595.10	F052061011	1595.10
12	F052090012	1729.60	F052060012	1729.60	F052061012	1729.60
13	F052090013	1780.80	F052060013	1780.80	F052061013	1780.80
14	F052090014	2414.90	F052060014	2414.90	F052061014	2414.90

Mobile stepladder EMG 55 - one-piece

Complies with standard EN 131-7
Load capacity: 150 kg - 1 person

Stepladder EMG model with 55° tilt angle, safety gate and steps depth 180 mm for improved comfort - Simple access aluminum stepladder - Ramp on each side for all models - Design for intensive use for various indoor and outdoor tasks : shelf access, mezzanine, cleaning large vehicle and tasks in the industrial and construction sector - Available from 3 to 10 steps for working height from 2.75 to 4.50 m. Options : Lever control for easy moving - Tool holder tablet : see page 15



Reference	Number of steps	Platform height, mm	Working height, mm	Ground overcrowding, mm with stabilizers L. x l.		Overall height, mm	Weight kg	Price €
				closed	open			
F051050003	3	750	2750	1304 x 1040	-	1818	32.00	820.90
F051050004	4	1000	3000	1479 x 1040	1479 x 1560	2068	37.60	855.30
F051050005	5	1250	3250	1654 x 1040	1654 x 1745	2318	41.30	1061.00
F051050006	6	1500	3500	1829 x 1040	1829 x 1745	2568	44.00	1151.60
F051050007	7	1750	3750	2004 x 1040	2004 x 1745	2818	50.70	1264.20
F051050008	8	2000	4000	2179 x 1040	2179 x 2317	3068	62.60	1378.10
F051050009	9	2250	4250	2354 x 1040	2354 x 2317	3318	68.70	1516.70
F051050010	10	2500	4500	2529 x 1040	2529 x 2317	3568	71.30	1658.00

Equipped with foldable stabilizer from 4 steps model.

Version with rear exit - right exit - left exit

Number of steps	Rear exit		Right exit		Left exit	
	Reference	Price €	Reference	Price €	Reference	Price €
3	F051090003	847.60	F051060003	860.90	F051061003	860.90
4	F051090004	881.80	F051060004	895.10	F051061004	895.10
5	F051090005	1087.70	F051060005	1101.00	F051061005	1101.00
6	F051090006	1178.30	F051060006	1191.60	F051061006	1191.60
7	F051090007	1290.90	F051060007	1304.10	F051061007	1304.10
8	F051090008	1404.60	F051060008	1418.20	F051061008	1418.20
9	F051090009	1543.40	F051060009	1556.70	F051061009	1556.70
10	F051090010	1684.70	F051060010	1698.00	F051061010	1698.00

Mobile stepladders

Mobile stepladder EMP

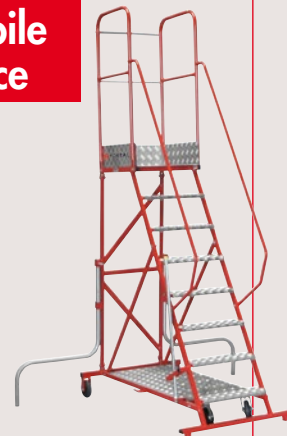
Complies with standard EN 131-7
Load capacity: 150 kg - 1 person
 Simple access, foldable, and mobile aluminum stepladder with telescopic and foldable stabilizers - Simple uses and ingenious, EMP stepladder is available from 3 to 13 steps for working height from 2.7 to 5.025 m



Reference	Number of steps	Platform height mm	Working height mm	Ground overcrowing (mm) L x l, stabilizers open	Folded overall length mm	Overall height mm	Weight kg	Price €
F050100003	3	700	2700	1230 x 1895	1994	1804	23.50	906.00
F050100004	4	935	2935	1385 x 2250	2244	2041	26.50	980.20
F050100005	5	1170	3170	1540 x 2300	2492	2283	28.00	995.30
F050100006	6	1405	3405	1700 x 2615	2741	2519	29.00	1039.10
F050100007	7	1635	3635	1850 x 2650	2990	2656	30.00	1083.10
F050100008	8	1865	3865	2860 x 2020	3240	3000	32.70	1121.60
F050100009	9	2100	4100	2885 x 2175	3485	3235	34.40	1202.30
F050100010	10	2330	4330	2770 x 2370	3740	3470	35.60	1320.50
F050100011	11	2565	4565	3380 x 2540	4000	3665	36.20	1810.20
F050100012	12	2795	4795	3745 x 2540	4250	3895	37.00	1854.30
F050100013	13	3025	5025	4110 x 2700	4500	4125	37.80	2076.50

Steel and aluminum mobile stepladder MR - one-piece

Complies with standard EN 131-7
Load capacity: 150 kg - 1 person
 Simple access stepladder with steel and aluminum structure - Design for outdoor and indoor intensive use on site and for various works : shelf access, mezzanine access, big size vehicles cleaning, various works in industry and construction industry
 - Available from 3 to 15 steps for working height from 2.6 to 5 m
 Options : Tools holder tablet - Lower platform for carton, tools, etc. loading



Reference	Number of steps	Platform height mm	Working height mm	Ground overcrowing (mm) L x l, stabilizers		Overall height mm	Weight kg	Price €
				closed	open			
F050170003	3	600	2600	780 x 810	-	1665	33.00	946.20
F050170004	4	800	2800	900 x 810	-	1865	38.00	996.70
F050170005	5	1000	3000	1020 x 810	-	2065	40.40	1059.10
F050170006	6	1200	3200	1140 x 810	-	2265	43.00	1097.90
F050170007	7	1400	3400	1260 x 810	-	2465	46.60	1153.80
F050170008	*8	1600	3600	1380 x 810	1380 x 1840	2665	55.80	1378.30
F050170009	*9	1800	3800	1500 x 810	1500 x 1840	2865	59.50	1432.70
F050170010	*10	2000	4000	1620 x 810	1620 x 1840	3065	63.00	1535.30
F050170011	**11	2200	4200	1740 x 810	1740 x 2400	3265	76.20	1719.40
F050170012	**12	2400	4400	1860 x 810	1860 x 2700	3465	79.60	1969.80
F050170013	**13	2600	4600	1980 x 810	1980 x 2800	3665	83.70	2108.80
F050170014	**14	2800	4800	2100 x 810	2100 x 2900	3865	86.80	2221.60
F050170015	**15	3000	5000	2220 x 810	2220 x 2900	4065	90.50	2485.00

*Rotating galvanized steel stabilizers with manual blocking

**Telescopic and foldable aluminum stabilizers

Mobile stepladder MRD

Load capacity: 150 kg - 1 person
 Mobile, double access stepladder - One-piece - Aluminum structure - Indoor and outdoor works in industry and construction industry



Reference	Number of steps	Platform length mm	Platform height mm	Working height mm	Ground overcrowing (mm) L x l, stabilizers open	Overall height mm	Weight kg	Price €
F050200003	3	550	700	2700	1080 x 951	1730	32.20	1255.80
F050210003	3	1105			1630 x 951		44.70	1563.50
F050220003	3	1656			1635 x 951		58.20	1770.60
F050200004	4	550	930	2930	1260 x 1175	1960	33.00	1287.60
F050210004	4	1105			1815 x 1175		46.50	1601.80
F050220004	4	1656			2365 x 1175		60.00	1815.80
F050200005	5	550	1165	3165	1445 x 1399	2195	34.80	1327.40
F050210005	5	1105			1995 x 1399		48.30	1651.10
F050220005	5	1656			2545 x 1399		61.80	1873.50
F050200006	6	550	1400	3400	1625 x 1623	2430	37.60	1420.60
F050210006	6	1105			2180 x 1623		51.10	1773.30
F050220006	6	1656			2730 x 1623		64.60	2013.50
F050200007	7	550	1630	3630	1805 x 1847	2660	39.90	1509.80
F050210007	7	1105			2360 x 1847		53.40	1885.80
F050220007	7	1656			2915 x 1847		66.90	2149.30
F050200008	8	550	1865	3865	1985 x 2071	2895	42.50	1637.30
F050210008	8	1105			2545 x 2071		56.00	2049.10
F050220008	8	1656			3095 x 2071		69.70	2331.70
F050200009	9	550	2100	4100	2170 x 2295	3130	46.00	1701.80
F050210009	9	1105			2725 x 2295		58.30	2132.90
F050220009	9	1656			3275 x 2295		71.80	2427.80
F050200010	10	550	2330	4330	2355 x 2519	3360	48.00	1750.00
F050210010	10	1105			2910 x 2519		60.30	2191.80
F050220010	10	1656			3460 x 2519		73.90	2495.20

Mobile platforms



Mobile platform with tilt 45° or 60°

Load capacity: 1 person

Useful width: 600 and 800 mm

Aluminum platform

Anti-slip ribbed aluminum steps depth 180 mm (for 60° model) and 230 mm (for 45° model)

Peripheral red lacquered handrail (RAL 3000)

4 wheels Ø 160 mm including 2 with brakes at front

Tilt 60°

Reference	Bearing height (mm)	Number of steps	Steps width (mm)	Price € length 600	Price € length 800	Price € length 1000	Price € length 1200	Price € length 1400
F817600500-060-XXX	500	2	600	2079.60	2132.00	2183.20	2277.50	2481.60
F817600750-060-XXX	750	3	600	2191.30	2243.80	2294.80	2542.20	2593.40
F817601000-060-XXX	1000	4	600	2302.90	2353.90	2406.40	2655.20	2706.20
F817601250-060-XXX	1250	5	600	2448.00	2500.60	2707.70	2801.80	2852.90
F817601500-060-XXX	1500	6	600	2597.50	2805.90	2858.10	2951.20	3003.60
F817601750-060-XXX	1750	7	600	2866.30	2914.80	2970.00	3064.20	3115.30
F817602000-060-XXX	2000	8	600	3116.40	3169.10	3220.10	3314.20	3365.40
F817600500-080-XXX	500	2	800	2129.40	2185.80	2242.40	2344.60	2558.50
F817600750-080-XXX	750	3	800	2246.40	2304.30	2360.60	2620.40	2676.70
F817601000-080-XXX	1000	4	800	2364.70	2421.20	2477.60	2739.90	2796.40
F817601250-080-XXX	1250	5	800	2519.50	2575.80	2793.80	2896.00	2952.40
F817601500-080-XXX	1500	6	800	2631.10	2850.30	2906.80	3007.60	3065.60
F817601750-080-XXX	1750	7	800	2960.50	3017.00	3073.40	3174.30	3230.80
F817602000-080-XXX	2000	8	800	3216.20	3272.60	3330.40	3431.30	3491.80

Reference: add -060 for bearing length 600 mm, -080 for bearing length 800 mm, etc.

Tilt 45°

Reference	Bearing height (mm)	Number of steps	Steps width (mm)	Price € length 600	Price € length 800	Price € length 1000	Price € length 1200	Price € length 1400
F817450500-060-XXX	500	2	600	2177.80	2228.80	2281.50	2542.20	2593.40
F817450750-060-XXX	750	3	600	2312.30	2364.70	2581.30	2675.50	2726.50
F817451000-060-XXX	1000	4	600	2622.90	2674.10	2726.50	2819.30	2871.80
F817451250-060-XXX	1250	5	600	2788.50	2839.50	2891.80	2984.80	3037.30
F817451500-060-XXX	1500	6	600	3109.90	3161.00	3213.30	3440.80	3491.80
F817451750-060-XXX	1750	7	600	3240.40	3292.70	3468.90	3576.50	3641.00
F817452000-060-XXX	2000	8	600	3537.50	3603.30	3669.50	3777.00	3842.90
F817450500-080-XXX	500	2	800	2232.80	2289.30	2345.90	2620.40	2676.70
F817450750-080-XXX	750	3	800	2376.80	2433.40	2660.60	2761.50	2819.30
F817451000-080-XXX	1000	4	800	2698.30	2756.20	2812.50	2913.50	2970.00
F817451250-080-XXX	1250	5	800	2874.30	2930.90	2987.30	3088.40	3260.60
F817451500-080-XXX	1500	6	800	3159.50	3216.20	3397.70	3508.00	3564.30
F817451750-080-XXX	1750	7	800	3442.10	3513.20	3583.40	3698.80	3768.90
F817452000-080-XXX	2000	8	800	3656.00	3725.80	3797.20	3912.70	3984.10

Reference: add -060 for bearing length 600 mm, -080 for bearing length 800 mm, etc.

Special construction platforms

Folding rolling platform PIRL CLASSIC

NEW

Complies with standard EN 131-7

Lightweight single-access mobile platform all-aluminium, easy to move due to its wheels Ø 100 mm - Available from 2 to 6 steps for working height from 2.5 to 3.5 m - Ribbed aluminum profile 55 x 25 mm for better grip - Anti-slip aluminum steps - depth 60 mm - Anti-slip plywood working platform - thickness 9 mm - replaceable: Length 413 x Width 479 mm with baseboard on 3 sides. Telescopic stabilizers (models 4 to 6 steps) - **EXCLUSIVE** : their storage inside the PIRL, in a folded position, facilitates handling and transport. Articulated guardrail with attached movable chain lock - one-handed opening and closing - automatic locking in open or closed position - Non-slip pads with large ground contact surface - Removable textile tool bag with handles for easy carrying of tools, can remain on the PIRL with tools when moving - Crane rings also serving as an articulation to fold up the PIRL



When folded, the PIRL CLASSIC is only 317 mm thick

Reference	Number of steps	Platform height, mm	Working height, mm	Ground overcrowing (mm) L x l		Overall height, mm	Folded overall height, mm	Weight kg	Price €
				Stabilizers closed	Stabilizers open				
F090190002	2	500	2500	989 x 558	989 x 558	1515	1636	12,30	445,00
F090190003	3	750	2750	1157 x 655	1157 x 655	1765	1906	15,20	475,00
F090190004	4	1000	3000	1325 x 558	1325 x 1500	2015	2176	17,60	535,00
F090190005	5	1250	3250	1493 x 558	1493 x 1684	2265	2446	18,70	620,00
F090190006	6	1500	3500	1661 x 558	1661 x 1612	2515	2716	20,00	665,00

Delivered mounted

Foldable and height adjustable PIR

Complies with standard NFP 93-352

Individual, foldable and in height adjustable (with pin locking system), mobile simple access stepladder PIR - Aluminum structure - Anti-slip ribbed aluminum steps, depth 80 mm - Anti-slip ribbed aluminum working platform, size 590 x 430 mm - 2 wheels Ø 200 mm non-load-bearing in working position - Height adjustable stabilizers - Foldable guardrail - Working height from 2.76 to 4.40 m - Crane rings



Reference	Modell	Platform height, mm	Working height, mm	Ground overcrowing, mm	Folded overall height*, mm	Weight kg	Price €
F090161001	From 3 to 5 steps	760	2760	1400 x 1850	2100	30.00	1063.90
		1000	3000	1680 x 2050			
		1230	3230	1720 x 2250			
F090161002	From 4 to 7 steps	1000	3000	1500 x 1680	2300	31.30	1201.00
		1230	3230	1680 x 2350			
		1470	3470	1820 x 2540			
		1700	3700	1980 x 2570			
		1470	3470	1820 x 2540			
F090161012	From 6 to 10 steps	1700	3700	1980 x 3180	2800	38.30	1413.80
		1950	3950	2100 x 3460			
		2190	4190	2300 x 3630			
		2430	4400	2400 x 3750			
		1470	3470	1820 x 2540			

Delivered partially-mounted

*Folded thickness for all models: 330 mm - Overall width for all models: 700 mm

Foldable and height adjustable PIRL - 2 to 4 rungs

Complies with standard EN 131

Load capacity 150 kg - 1 person

Simple access - foldable and in height adjustable - easy to move due to its wheels Ø 125 mm - non-load-platform in working position - Aluminum structure - working height from 2.5 to 3 meter - ergonomic height adjustment system - anti-slip aluminum rungs 25 x 25 mm - Tool holder tablet - rear free passage allowing access above the toilets, ducts, rails, ... - crane rings
Option: double safety gate (to be specified when ordering)



Reference	Number of steps	Platform height, mm	Working height, mm	Ground overcrowing (mm) L x l	Weight kg	Price €
F090161000	PIRL 2 to 4 steps	500	2500	1105 x 813	20.00	815.00
		750	2750	1290 x 813		
		1000	3000	1480 x 813		

Delivered mounted

Mobile and foldable platform PIRL

Complies with standard EN 131-7

Simple access platform, foldable, easy to move due to its wheels Ø 125 mm non-load-bearing in working position - Aluminum structure - Available from 2 to 6 steps for working height from 2.5 to 3.5 m - Tools holder tablet - Without stabilizers (except models 4, 5 and 6 steps) - Rear free passage allowing access above the toilets, ducts, rails, ... (model 3-steps) - Step depth: 80 mm for models in ribbed aluminum - 140 mm for models in grating - Crane rings
Options: Double safety gate (to be specified when ordering)



With push-up rollers

Step in grating

Steps in ribbed aluminum with push-up rollers

Reference	Number of steps	Platform height, mm	Working height, mm	Ground overcrowing (mm) L x l		Folded overall height, mm	Overall height, mm	Weight kg	Price €
				Stabilizers closed	Stabilizers open				
F090182002	2	500	2500	969 x 693	-	1722	1547	15.20	684.50
F090182003	3	750	2750	1153 x 693	-	1978	1797	17.30	717.50
F090182004	4	900	2900	1264 x 908	-	2144	1947	17.70	744.90
F090182005	5	1250	3250	1520 x 693	1520 x 1690	2530	2297	21.80	913.70
F090182006	6	1500	3500	1704 x 693	1704 x 1690	2806	2547	23.30	950.80

*Thickness for all models: 300 mm

Grating steps

Reference	Number of steps	Platform height, mm	Working height, mm	Ground overcrowing (mm) L x l		Folded overall height, mm	Overall height, mm	Weight kg	Price €
				Stabilizers closed	Stabilizers open				
F090181002	2	500	2500	969 x 693	-	1722	1547	18.30	589.50
F090181003	3	750	2750	1153 x 693	-	1978	1797	20.90	645.50
F090181004	4	900	2900	1264 x 908	-	2144	1947	24.50	699.90
F090181005	5	1250	3250	1520 x 693	1520 x 1690	2530	2297	26.90	893.70
F090181006	6	1500	3500	1704 x 693	1704 x 1690	2806	2547	28.90	955.80

*Thickness for all models: 300 mm

Special construction platforms

Foldable PIR

Complies with standard NF P93-353
Simple access, foldable platform - Aluminum structure - Easy to move due to its wheels Ø 200 mm non-load-bearing in working position - Foldable and adjustable stabilizers - Large working platform - Crane rings



Reference	Number of steps	Platform height, mm	Working height, mm	Ground overcrowding (mm) L x l, stabilizers open	Folded overall height, mm	Overall height, mm	Weight kg	Price €
F090180007	7	1750	3750	1960 x 2670	3090	2800	29.30	848.30
F090180008	8	2000	4000	2145 x 2990	3367	3050	32.50	995.30
F090180009	9	2250	4250	2330 x 2900	3645	3300	33.70	1100.90
F090180010	10	2500	4500	2510 x 2790	3920	3550	35.20	1250.50

Non foldable PIR

Load capacity: 150 kg - 1 person
One-piece individual, mobile simple access platform PIR - Strong and lightweight aluminum structure - Anti-slip ribbed aluminum steps, depth 80 mm - telescopic and foldable stabilizers - Two wheels Ø 200 mm non-load-bearing in working position - Working height from 2.47 to 4.33 m - Crane rings



Reference	Number of steps	Platform height mm	Working height mm	Ground overcrowding (mm) L x l, stabilizers		Overall height mm	Weight kg	Price €
				closeed	open			
F090050002	2	470	2470	1190 x 810	1190 x 2100	1520	26.50	775.70
F090050003	3	700	2700	1280 x 810	1280 x 2150	1750	31.50	781.10
F090050004	4	940	2940	1370 x 810	1370 x 2500	1990	33.30	793.50
F090050005	5	1170	3170	1460 x 810	1460 x 2550	2220	35.30	856.70
F090050006	6	1400	3400	1560 x 810	1560 x 2600	2450	37.20	944.50
F090050007	7	1630	3630	1640 x 810	1640 x 2340	2680	39.10	1023.90
F090050008	8	1860	3860	1740 x 810	1740 x 2500	2910	43.00	1103.70
F090050009	9	2100	4100	1840 x 810	1840 x 2650	3150	44.60	1214.70
F090050010	10	2330	4330	1910 x 810	1910 x 2660	3380	46.90	1334.20

Delivered non-mounted

Trench access ladder

Load capacity 150 kg - 1 person
Specially design for public works and hydraulic operators for safe access to pits without shielding - Height adjustment by indexed sliding system - Ramp on each side - Set up by one operator - Foldable for easy storage and transport - Wheels Ø 125 mm - Crane rings



Reference	Number of steps	Height access, mm	Weight kg	Price €
F091100015	5 à 8	De 1000 à 1900	21.30	950.00
F091100020	7 à 12	De 1500 à 2900	24.90	1100.00
F091100025	11 à 20	De 2500 à 5000	35.30	1320.00

Mobile "formwork" platform

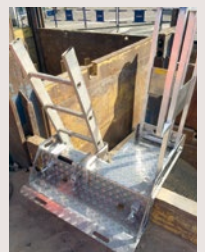
Load capacity: 150 kg - 1 person
Platform length: 550 mm - Easily installed inside the formwork - Strong and lightweight aluminum structure - Two wheels Ø 200 mm non-load-bearing in working position - Adjustable stabilizers - Working height from 2.70 to 4.33 m - Crane rings



Reference	Number of steps	Platform length mm	Platform height mm	Working height mm	Ground overcrowding (mm) L x l, stabilizers open	Overall height mm	Weight kg	Price €
F090250003-580	3	550	695	2695	1255 x 905	1725	30.00	1010.30
F090260003-580	3	1105			1810 x 905		43.50	1302.50
F090270003-580	3	1656			2360 x 905		57.00	1487.90
F090250004-580	4	550	930	2930	1425 x 1175	1960	32.00	1040.50
F090260004-580	4	1105			1980 x 1175		45.50	1331.30
F090270004-580	4	1656			2530 x 1175		59.00	1530.50
F090250005-580	5	550	1165	3165	1610 x 1399	2195	33.80	1076.20
F090260005-580	5	1105			2160 x 1399		47.30	1378.10
F090270005-580	5	1656			2710 x 1399		60.80	1584.00
F090250006-580	6	550	1400	3400	1790 x 1623	2430	36.60	1165.30
F090260006-580	6	1105			2345 x 1623		50.10	1492.00
F090270006-580	6	1656			2895 x 1623		63.60	1715.40
F090250007-580	7	550	1630	3630	1970 x 1847	2660	38.90	1247.70
F090260007-580	7	1105			2525 x 1847		52.40	1596.20
F090270007-580	7	1656			3080 x 1847		65.90	1835.00
F090250008-580	8	550	1865	3865	2150 x 2071	2895	41.50	1365.70
F090260008-580	8	1105			2710 x 2071		55.00	1747.20
F090270008-580	8	1656			3260 x 2071		68.50	2009.30
F090250009-580	9	550	2100	4100	2335 x 2295	3130	43.80	1426.10
F090260009-580	9	1105			2890 x 2295		57.30	1825.40
F090270009-580	9	1656			3440 x 2295		70.80	2099.80
F090250010-580	10	550	2330	4330	2520 x 2519	3360	45.80	1468.60
F090260010-580	10	1105			3075 x 2519		59.30	1880.30
F090270010-580	10	1656			3625 x 2519		72.80	2161.70

Shielding pit access

Specially design for public works and hydraulic operators for safe access to pits with high height shielding - Adjustable in height by sliding system on ladder (non-misplaced during use) - Shielding clamping from 80 to 150 mm by cylinders plates - 3 ladders width adaptable - Guidance useful width: 390 - 460 and 520 mm - Flat sheet aluminum anti-slip checkered platform, thickness 5.5/7 mm - Removable and foldable guardrails for easy storage and transport - Installation by two persons
Ladder non provided



Reference	Overall width, mm	Overall length, mm	Weight kg	Price €
F091110010	1 000	1 044	33	1770.60

Special construction platforms

Foldable platform for formwork access PAP

Load capacity: 150 kg - 1 person

Aluminum structure access platform for working heights from 3.67 to 4.85 m - Hanging height from 1.68 to 3.77 m - Formwork thickness suitable from 180 to 320 mm - Anti-slip aluminum ribbed working platform 413 x 479 mm - Articulated guardrail - Crane rings
Option : Fixed rubber tire wheels kit Ø 200 mm



FOLDABLE MODEL
A FORTAL EXCLUSIVITY

Reference	Designation	Ground overcrowding mm	Folded overcrowding mm	Platform height mm	Working height mm	Hanging height mm	Weight kg	Price €
F090160051	Foldable PAP	1220	3090 x 760 x 220	From 1670 to 2850, in steps of 237.5 mm	From 3670 to 4850, in steps of 237.5 mm	From 1680 to 3770, in steps of 50 mm	21.70	1249.00
		1316						
		1412						
		1508						
		1604						
		1700						

Delivered folded

Platform for slab PAD access

Load capacity: 150 kg - 1 person

Aluminum access platform for working height from 3.8 to 4.51 m - Hanging height from 1.8 to 2.51 m - Thickness suitable from 18 to 32 cm - Flat sheet checkered and anti-slip platform, size: 500 x 430 mm - Foldable safety gate - Crane rings - Possible to add lateral ramps and adjustable foot



Reference	Designation	Ground overcrowding mm	Folded overcrowding mm	Platform height mm	Working height mm	Hanging height mm	Weight kg	Price €
F090165012	PAD with bar + gate 1990/270	1310	2200 x 660 x 900	1800	3800	1800	23	1249.00
		1395		2035	4035	2035		
		1477		2270	4270	2270		
		1558		2505	4505	2505		

Delivered folded

Possibility to equip the platform with adjustable foot, height increased 200 mm and weight 2 kg (view page 15)

Platform for formwork PAP high height access

Load capacity: 150 kg - 1 person

Stable due to anti-slip and self-locking hooks - Crane rings



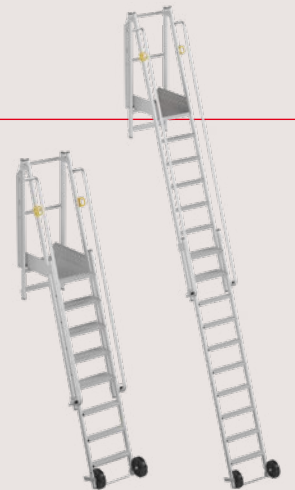
Reference	Designation	Ground overcrowding mm	Folded overcrowding mm	Platform height mm	Working height mm	Hanging height mm	Weight kg	Price €
F090160012-EIF	Platform wall access with gate - high-rise	1400	2300 x 660 x 1200	1890	3890	2850	30	1688.10
		1485		2125	4125	3085		
		1570		2360	4360	3320		
		1655		2595	4595	3555		
		1740		2830	4830	3790		

Delivered non-mounted

Bungalow platform

Load capacity: 150 kg - 1 person

Crane rings



F090169002

F090169005

Reference	Designation	Ground overcrowding mm	Folded overcrowding mm	Platform height mm	Working height mm	Hanging height mm	Weight kg	Price €
F090169002	Bungalow platform	1480	3170 x 660 x 512	1880	3880	1880	29	1535.90
		1565		2155	4155	2155		
		1650		2350	4350	2350		
		1735		2585	4585	2585		
		1820		2820	4820	2850		
F090169005	Bungalow platform high height model	1720	3220 x 660 x 512	2390	4390	2390	32	1681.30
		1805		2625	4625	2625		
		1890		2860	4860	2860		
		1975		3095	5095	3095		
		2060		3330	5330	3330		
		2145		3565	5565	3565		
		2230		3800	5800	3800		

Truck access

Aluminum loading and unloading dock CLASSIC range

Load capacity: 300 kg - uniformly distributed

- Raw extruded aluminum main structure 75 x 25 mm
- series 6000 particularly resistant against harshest weather conditions and maintenance free
- Staircase with anti-slip ribbed steps soldered on profile
- Useful width (steps width) : 600 mm
- Steps height : 200 mm - Screw guardrail composed of handrail, intermediary rail and baseboard
- Platform coating : checkered flat sheet aluminum, thickness 4.4 mm - 4 swivel wheels with brake Ø 125 mm
- Crane rings



Model 1 m

REPAIRABLE ON SITE

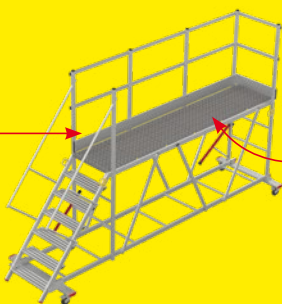


Model 2 m



Model 3 m

Option 2 : Safety gate on working platform (mounting side)



Option 1 : Guardrail with safety gate on working platform (truck side)



Reference	Designation	Number of steps	Overall length, mm	Overall width, mm	Overall height, mm	Platform length, mm	Platform height, mm	Platform width, mm	Weight kg	Price €
F808000100	Unloading dock, length 1 m	7	2161	1145	2462	1000	1400	600	68	2536.50
F808000200	Unloading dock, length 2 m	7	3161	1145	2462	2000	1400	600	87	3023.40
F808000300	Unloading dock, length 3 m	7	4161	1145	2462	3000	1400	600	107	3446.10
F808000100-001	Safety gate for unloading docks length 2 and 3 m								17	141.10
F808000200-001	Guardrail with safety gate for unloading dock length 2 m								-	326.80
F808000300-001	Guardrail with safety gate for unloading dock length 3 m								-	352.40

Delivered mounted

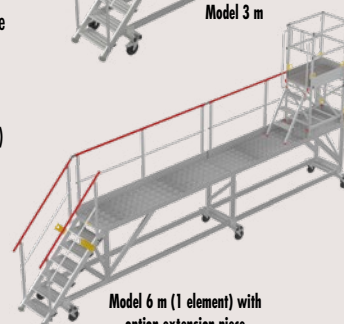
Aluminum loading and unloading dock COMFORT range

Load capacity: 300 kg - uniformly distributed

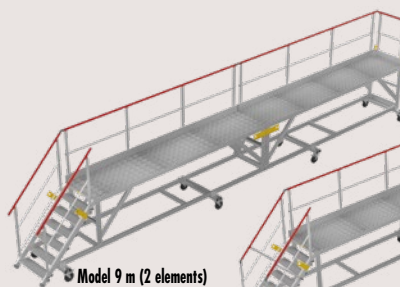
- Raw extruded aluminum main structure 100 x 30 mm - series 6000 particularly resistant against harshest weather conditions and maintenance free
- Staircase with anti-slip ribbed steps soldered on profile - Useful width (steps width) : 600 mm
- Steps height : 200 mm - Guardrail composed of handrail, intermediary rail and baseboard (150 mm)
- Platform coating : checkered flat sheet aluminum, thickness 4.4 mm - 4 swivel wheels with brake Ø 200 mm - Crane rings



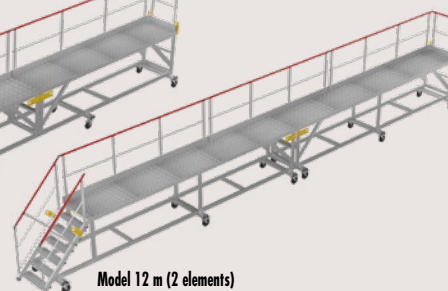
Model 3 m



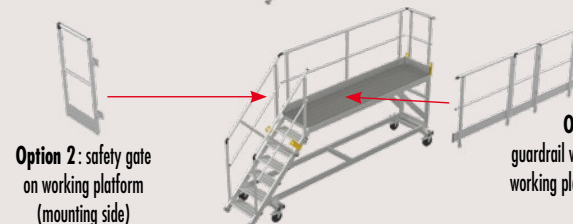
Model 6 m (1 element) with option extension piece



Model 9 m (2 elements)



Model 12 m (2 elements)



Option 2 : safety gate on working platform (mounting side)

Option 1 : guardrail with safety gate on working platform (truck side)

Reference	Designation	Number of steps	Overall length, mm	Overall width, mm	Overall height, mm	Platform length, mm	Platform height, mm	Platform width, mm	Weight kg	Price €
F801030230	Loading/unloading dock 3 m with 1 lateral guardrail	7	4290	997	2520	3000	1400	634	136.00	4295.00
F801030240	Loading/unloading dock 6 m with 1 lateral guardrail	7	7340	997	2520	6000	1400	634	216.80	5810.00
F801030250	Loading/unloading dock 9 m with 1 lateral guardrail	7	10340	997	2520	9000	1400	634	328.00	8790.00
F801030260	Loading/unloading dock 12 m with 1 lateral guardrail	7	13340	997	2520	12000	1400	634	422.75	11190.00
F801030231	Option : safety gate*								4.10	429.80
F801030232	Option : lateral guardrail for 3 meter loading/unloading dock**								17.00	968.50
F808001000	Option : extension piece									On request

Delivered mounted - Custom made version on request

*For mounting side - Only possible if the guardrail F801030232 is mounted

**For truck side - with exit truck safety gate

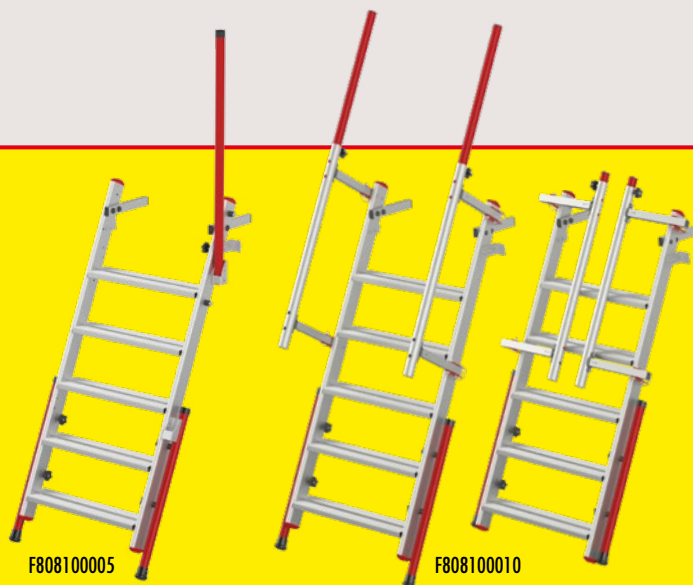
Truck access

Truck access ladder

Load capacity: 150 kg - 1 person

For quick and easy access to the truck - Height adjustable from 1330 to 1470 mm - Adjustable foot - Quick installation, holding 2 magnets - Foldable handrail or foldable and telescopic handrail (reduce space requirement) for securing up and down - Step depth: 125 mm

Reference	Designation	Overall length, mm	Overall width, mm	Useful width, mm	Number of steps	Height access, mm	Weight kg	Price €
F808100005	Truck access ladder	1590	775	600	5	1330 to 1470	12.20	536.90
F808100010	Truck access ladder with foldable handrails	1760	780	600	5	1330 to 1470	16.30	820.00
F808100005-003	Option : 2nd handrail for F808100005							93.40



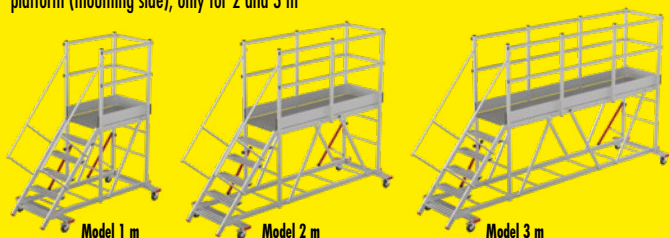
Waste skip access platforms

Waste skip access platform CLASSIC range

Load capacity: 150 kg - 1 person

Aluminum structure - Guardrail assembly by screw - Anti-slip ribbed aluminum steps, depth 180 mm - Staircase tilt 50° - Flat sheet checkered aluminum platform - Baseboard - Ramps and guardrail Ø40 mm - 2 swivel wheels with brakes at the front and 2 fixed wheels Ø125 mm at the rear - Foot pads - Stabilizers on external side - Option: Safety gate on working platform (mounting side), only for 2 and 3 m

REPAIRABLE ON SITE



Reference	Designation	Number of steps	Platform height, mm	Platform length, mm	Platform width, mm	Overall length, mm	Overall height, mm	Weight kg	Price €
F809000100	Waste skip access platform, length 1 m	6	1250	1000	600	2040	2312	68	2587.90
F809000200	Waste skip access platform, length 2 m	6	1250	2000	600	3040	2312	91	3087.50
F809000300	Waste skip access platform, length 3 m	6	1250	3000	600	4040	2312	115	3535.80
F808000100-001	Option: Safety gate for, only for 2 and 3 m								141.10

Delivered mounted - Overall width with deployed stabilizers: 1415 mm - Overall width: 1145 mm

Waste skip access platform COMFORT range

Load capacity: 150 kg - 1 person

Aluminum structure 100 x 30 mm - Assembly by welding - Anti-slip ribbed aluminum, depth 230 mm - Checkered flat sheet aluminum platform - Baseboard 150 mm - ramps and guardrail Ø 40 mm - 2 swivel wheels at the front and 2 fixed wheels at the rear - Foot pads - Options: - Lever control for easy moving - For more safety add safety gate on working platform (mounting side)



Reference	Designation	Number of steps	Platform height, mm	Platform length, mm	Width between baseboard, mm	Overall width, mm	Overall length, mm	Overall height, mm	Weight kg	Price €
F801140018	Waste skip access platform, length 1 m	6	1250	1000	860	1170	2170	2360	92.00	3417.20
F801140017	Waste skip access platform, length 2 m	6	1250	2000	860	1170	3170	2360	121.00	3828.90
F801140014	Waste skip access platform, length 3 m	6	1250	3000	860	1170	4170	2360	142.00	4171.90
F801140014-001	Option: single wheel lever system								10.00	343.30
F801140019-004	Option: gate								4.50	459.80

Delivered mounted (except guardrail) - Custom made version on request

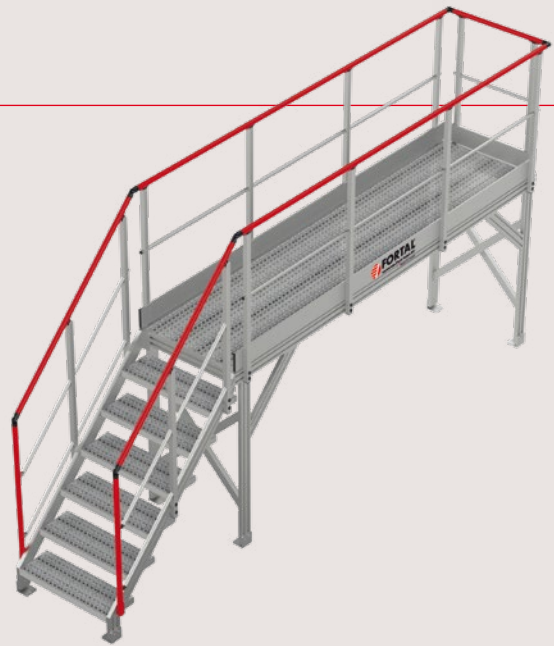
Fixed walkway for washing station

Fixed walkway for large vehicle washing station

Load capacity: 200 kg/m²

Walkway in compliance with EN 85-018

Walkway in raw extruded aluminum main structure 100 x 30 mm - series 6000 particularly resistant against harshest weather conditions and maintenance free - assembly by welding - staircase tilt: 45° - grating cover steps, depth: 280 mm - Grating landing coverry - guardrail composed of red lacquered handrail, intermediary rail and baseboard - the walkway is supported by 2 feet for fixing to the ground



Reference	Platform length (mm)	Number of steps	Platform height (mm)	Working height (mm)	Platform width (mm)	Weight kg	Price €
F801150001	3000	7	1500	3500	600	129.05	3937.50
F801150002	5000	7	1500	3500	600	193.49	5029.50

Custom made version on request

Platforms lift

Low rise platform lift

A range of mobile platforms with vertical extensions mast for indoor us.

Easy to use :

- Low weight, compact and 360° front swivel wheels with brake allow easy moving by only one person
- Once on the platform, simply turn the central handle (with assisted movement for reduce effort) to move up or down to the required height



FORTALIFT 420



FORTALIFT 420 EXT



FORTALIFT 350

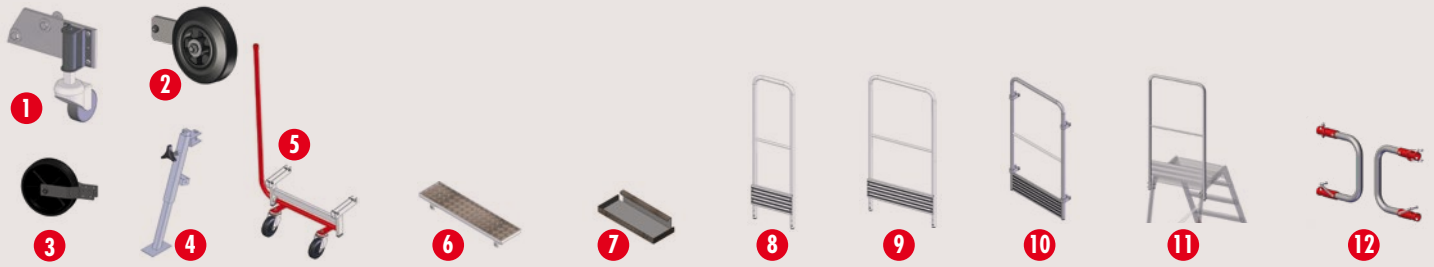


Reference	Model	Working height, mm	Overall size, mm	Folded height, mm	Working platform size, mm	Wheels with non-marking tyres	Maximum horizontal offset, mm	Weight, kg	Net price €
F081500029	PFE350	3500	980 x 700	1550	720 x 600	3 - Ø 150 mm	500	180	4900.00
F081500028	PFE420	4200	1280 x 740	1930	850 x 650	4 - Ø 200 mm	500	305	7100.00
F081800101	420 EXT	4200	1280 x 950	1950	850 x 640	4 - Ø 200 mm	500	340	8505.00

NEW

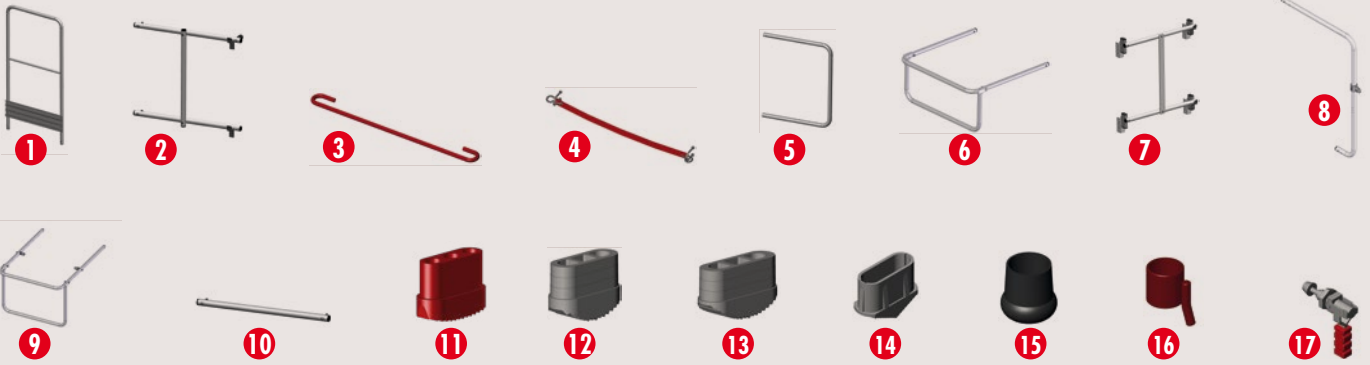
Ex-works price

Options



Reference	Designation	Simple or dual access stepladder SOLIDE	Foldable step stool MP5A	Step stools EPDA and EPSA	Mobile aluminum stepladder EMG 68 and 55°	Steel and aluminum stepladder MR	Mobile stepladder MRD	Mobile stepladder EMP	Mobile and foldable platform PIRL	Foldable PIR	Foldable and height adjustable PIR	Non-foldable PIR	Mobile "formwork" platform	Foldable and height adjustable "formwork" platform	Platform for slab PAD and formwork PAP access, bungalow	Marker	Weight kg	Price €
F050030070	Wheels kit for EPDA (4 pieces)			•												1	1.80	172.80
R880090015	Wheels kit for EPSA (2 pieces)			•												2	2.43	42.70
F030090005	Fixed wheel with U bracket and hardware Ø 200 mm														•	3	1.12	80.80
F050030077	Push-up wheels mounting on spring (4 pieces)		•						•							-	1.80	172.80
F030091805	Wheels kit Ø125 mm with mounting bracket (to replace original wheel)								•							-	0.60	17.60
F030090001	Adjustable foot for PAP and PAD														•	4	2.50	46.70
F050030055	Front wheels lever control for EMG															5	10.78	204.50
F050030065	Front wheels lever control for EMG 68				•											5	10.80	204.50
F050030067	Front wheels lever control for EMG 55				•											5	10.80	204.50
F030040002	Tools holder tablet for simple access SOLIDE	•														-	0.20	29.30
F030040005	Tools holder tablet for EMG, non-foldable PIR and EMP							•				•				6	0.88	68.90
F030040010	Tools holder tablet for EMG 68 and 55				•											-	1.985	68.90
F030040015	Tools holder tablet for MR					•										-	3.60	135.70
	Lower aluminum platform for MR					•										-	Nous consulter	
F030040007	Tools holder tablet for "formwork" platform												•			7	1.20	70.00
F030050015	Lateral guardrail for EPDA (one piece)			•												8	2.20	117.30
F030050016	Lateral guardrail for EPSA (one piece)			•												9	3.00	117.30
F030050018	Rear guardrail for EPSA (on piece)			•												10	2.60	117.30
F030050040	Elongated rear guardrail (lateral fixing)			•												11	3.00	117.30
F030090042	Safety strap for MR					•											0.12	26.20
R880030400	Double safety gate								•	•						12	1.60	88.60

Spare parts



Reference	Designation	Simple or dual access stepladder SOLIDE	Step stools EPDA, EPSA, trapezoidal and MPFA	Mobile stepladders EMG	Mobile stepladder MR	Mobile stepladder MRD	Mobile stepladder BMP	Mobile "formwork" platform	Foldable and height adjustable "formwork" platform	Non-foldable PIR	PIR and foldable PIR	Foldable and height adjustable PIR	Platform for slab PAD and formwork PAP access, bungalow	Marker	Weight, kg	Price €	
F030090009	Aluminum lateral guardrail for "formwork" platform and MRD					•		•							1	0.13	97.90
F030090014-580	Articulated guardrail for "formwork" platform and MRD					•		•							2	1.30	68.90
A700170018-550	Red handrail					•		•							3	0.48	35.90
F030090042	Strap type guardrail for PAP (one piece)											•			4	0.12	26.20
F030090041	Aluminum articulated guardrail for PAP and PAD											•			2	1.09	139.90
F030090043	Lateral guardrail for PAP											•			5	1.15	36.70
F030090050	Foldable guardrail for foldable PIR, adjustable in height PIR and EMP							•			•	•			6	2.80	131.70
F030092005	Lateral guardrail for foldable "formwork" platform							•							-	2.00	106.30
F030092010	Articulated guardrail for foldable "formwork" platform							•							-	1.50	68.20
F030050010	Articulated front guardrail for EMG			•											1	1.30	97.90
F030050013	Strap type guardrail for EMG (2 pieces)			•											4	0.50	28.60
F030050011	Articulated rear guardrail for EMG and PIR			•						•					7	2.20	117.30
F030050500	Lateral guardrail for EMG 3, 4 and 5 steps			≤ 5 M.											8	1.104	92.20
F030050014	Lateral guardrail for EMG ≥ 6 steps			≥ 6 M.											8	2.05	105.20
F030050400	Front or rear safety gate for EMG 68 and 55			•											1	1.60	68.90
F030050405	Right/left safety gate for EMG 68 and 55 side exit			•											1	1.60	68.90
F030090010	Foldable guardrail for non-foldable PIR (one piece)									•					9	3.20	152.40

Reference	Designation	Simple or dual access stepladder SOLIDE	Step stools EPDA, EPSA, trapezoidal and MPFA	Mobile stepladders EMG	Mobile stepladder MR	Mobile stepladder MRD	Mobile stepladder BMP	Mobile "formwork" platform	Foldable and height adjustable "formwork" platform	Non-foldable PIR	PIR and foldable PIR	Foldable and height adjustable PIR	Platform for slab PAD and formwork PAP access, bungalow	Marker	Weight, kg	Price €				
F030050095	Lateral guardrail for MR				•										-	2.00	124.30			
F030090049	Upper handrail for "formwork" platform (one piece)							•							10	0.40	12.90			
A750115823	Red pad 58x23 mm for EMP and foldable PIR ≤ 7 steps - adjustable in height PIR - PAD and PAP													≤ 7 M.	≤ 7 M.	•	•	11	0.044	6.90
A750016525	Grey pad 65x25 mm for EMP, foldable PIR, MRD, "formwork" platform, adjustable in height "formwork" platform, foldable "formwork" platform and trapezoidal step stool			•		•		•	•					≥ 8 M.	≥ 8 M.			12	0.06	8.70
A750016527	Red pad 65x25 mm for EMP, foldable PIR, MRD, "formwork" platform, adjustable in height "formwork" platform, foldable "formwork" platform and trapezoidal step stool			•		•		•	•					≥ 8 M.	≥ 8 M.			-	0.06	8.70
A750017525	Grey pad 75x25 mm for EMG and non-foldable PIR			•						•								13	0.06	9.20
A750017526	Red pad 75x25 mm for EMG and non-foldable PIR			•						•								-	0.06	9.20
A750010015	Grey pad 65x25 mm for EPDA and EPSA			•														14	0.06	10.00
A750011015	Red pad 65x25 mm for EPDA and EPSA			•														-	0.06	10.00
A750100019	Red left front pad for SOLIDE	•																-	0.01	13.10
A750100020	Red right front pad for SOLIDE	•																-	0.01	13.10
A750100021	Red rear pad 40 for SOLIDE	•																-	0.01	10.40
A750100022	Red rear pad 50 for SOLIDE ≥ 7 steps	•																-	0.01	10.40
A751120040	Pad for stabilizer			•	•	•	•	•	•	•	•	•	•					15	0.08	4.70
A700170015	Retainer ring for stabilizer			≥ 8 M.		≥ 8 M.								≥ 6 M.				16	0.18	11.50
A700930005	Stabilizer locking system			•	•	•	•	•	•	•	•	•	•					17	0.13	29.00

Spare parts



Reference	Designation	Simple or dual access step ladder SOLIDE	Step stools EPSA, EPFA, trapezoidal and MFSA	Mobile step ladders EMG	Mobile step ladder MR	Mobile step ladder MRD	Mobile step ladder EMP	Mobile "formwork" platform	Foldable and height adjustable "formwork" platform	Non-foldable PIR	PIRL and foldable PIR	Foldable and height adjustable PIR	Platform for sub PAD and formwork PIR access, hangway	Marker	Weight, kg	Price €
F030090026	Stabilizer bracket for EMG, MRD and "formwork" platform			•		•	•							18	0.06	20.40
A720060700	Polypro strap 25 x 700 mm for EMG and EMP			•			•							19	0.05	11.30
A720021800	Red strap for foldable "formwork" platform							•						-	0.05	7.10
F030092015	Locking system for foldable "formwork" platform							•						-	0.05	71.10
F030050008	Rear crossbar for EMG with wheels and steel junction pieces			•										21	2.78	75.30
F030053005	Rear crossbar for EMG 68 and 55 with wheels and steel junction pieces			•										21	2.80	75.30
A790110200	Wheel Ø200 mm (one piece)							•	•	•	•	•	•	22	1.19	19.40
F030050023	Fixed wheel with screw Ø 125 mm for EMG and MRD			•		•								23	0.75	34.30
F030050024	Swivel wheel with brake and hardware Ø125 mm for EMG			•										24	0.79	23.30
F030050026	Swivel wheel with brake and hardware Ø125 mm for MR				•									-	0.80	23.30
F030090005	Fixed wheel with U bracket and hardware Ø 200 mm							•	•	•	•	•	•	25	1.12	80.80
F030010026	Fixed wheel Ø 125 mm with hardware for MR				•									-	0.50	24.50
F030091005	Fixed wheel Ø125 mm with screw		•											-	0.55	24.50
F030800020	Fixed wheel Ø200 mm for loading and unloading dock													-	2.50	24.50
F030800025	Swivel wheel Ø200 mm for loading and unloading dock													-	3.70	31.30
F050030056	Wheels kit for EMG (2 pieces)			•										26	3.00	66.80
F050030064	Wheels kit for EMG 68 and 55 (2 pieces)			•										26	3.00	36.60
F050030075	Wheels kit for MRD (4 pieces)				•									27	3.10	154.90
F050030076	Wheels kit for EMP (2 pieces)					•								28	2.00	46.90
F090030050	Wheels kit for adjustable in height PIR (2 pieces)								•					-	2.20	46.90
F030091006	Handle and screw		•											29	0.15	20.90
STABILIZER FOR:																
F030090069	Foldable "formwork" platform 3 steps							•						30	1.40	205.60
F030090070	Foldable "formwork" platform 4 steps							•						30	1.40	205.60
F030090071	Foldable "formwork" platform 5 steps							•						30	1.70	207.20

Reference	Designation	Simple or dual access step ladder SOLIDE	Step stools EPSA, EPFA, trapezoidal and MFSA	Mobile step ladders EMG	Mobile step ladder MR	Mobile step ladder MRD	Mobile step ladder EMP	Mobile "formwork" platform	Foldable and height adjustable "formwork" platform	Non-foldable PIR	PIRL and foldable PIR	Foldable and height adjustable PIR	Platform for sub PAD and formwork PIR access, hangway	Marker	Weight, kg	Price €
STABILIZER FOR: (CONTINUATION)																
F030090072	Foldable "formwork" platform 6 steps							•						30	2.00	207.60
F030090073	Foldable "formwork" platform 7 steps							•						30	2.40	207.60
F030090078	EMG, EMP, PIR 2 and 3 steps			•			•			•	•			30	3.60	164.30
F030090079	EMG, EMP, PIR, adjustable in height PIR from 4 to 7 steps			•			•			•	•	•		30	3.70	167.90
F030090080	EMG, EMP, MR and PIR from 8 to 10 steps			•	11 to 15 steps		•			•	•			30	4.80	202.40
F030090100	EMG 68 and 55 3 and 4 steps			•										-	1.50	66.80
F030090101	EMG 68 and 55 5 to 7 steps			•										-	1.80	77.60
F030090102	EMG 68 and 55 from 8 steps and more			•										-	2.10	88.20
F030090016	MR from 8 to 10 steps				•									-	3.30	48.30
F030090081	EMG and EMP from 11 to 15 steps			•			•							30	5.90	231.80
F030090095	Foldable and adjustable in height PIR from 6 to 10 steps											•		30	4.80	202.30
F030090079	Foldable and adjustable in height PIR from 4 to 7 steps											•		30	3.70	189.50
F030090097	Foldable and adjustable in height PIR from 3 to 5 steps											•		30	4.50	174.50
F030090096	Foldable and adjustable in height "formwork" platform								•					31	3.50	202.30
F030090070	MR and "formwork" platform 4 steps						•	•						31	1.40	205.60
F030090071	MR and "formwork" platform 5 steps						•	•						31	1.70	207.20
F030090072	MR and "formwork" platform 6 steps						•	•						31	2.00	207.60
F030090073	MR and "formwork" platform 7 steps						•	•						31	2.40	207.60
F030090074	MR and "formwork" platform 8 steps						•	•						31	2.70	210.70
F030090075	MR and "formwork" platform 9 steps						•	•						31	3.40	212.30
F030090076	MR and "formwork" platform 10 steps						•	•						31	3.70	213.80
F030090090	Front stabilizer kit for PIR from 4 to 6 steps									•				30	7.80	263.10
F030090091	Front stabilizer kit for PIR from 7 to 10 steps									•				30	10.00	263.10
F030050045	Stabilizer for EPFA		•											32	1.66	110.50
F030091810	Crane rings (2 pieces)									•	•	•	•	33	0.30	25.60

Staircases

Staircase with tilt 60°

Complies with standard EN ISO 14122-2-3

Load capacity: 150 kg/m² on step

Aluminum staircase

Useful width: 600 and 800 mm

Anti-slip ribbed aluminum steps depth 180 mm

Fixed on ground by plates

Fixed on wall by plates

Delivery with an aluminum red lacquered handrail (RAL 3000)

Second handrail on request (see table below)



Reference	Height to serve (mm)	Number of steps	Steps width (mm)	Wall spacing (mm)	Price €	Price € Second handrail
F811600500-060	500	1	600		257.20	-
F811600750-060	750	2	600	433	534.20	157.50
F811601000-060	1000	3	600	577	616.30	159.80
F811601250-060	1250	4	600	722	699.60	178.30
F811601500-060	1500	5	600	866	852.90	196.70
F811601750-060	1750	6	600	1010	935.00	227.40
F811602000-060	2000	7	600	1155	1018.50	235.90
F811602250-060	2250	8	600	1299	1171.70	258.10
F811602500-060	2500	9	600	1443	1253.70	263.00
F811602750-060	2750	10	600	1588	1337.20	269.20
F811603000-060	3000	11	600	1732	1517.10	274.20
F811603250-060	3250	12	600	1876	1584.40	280.30
F811603500-060	3500	13	600	2021	1771.90	367.60
F811603750-060	3750	14	600	2165	1923.30	372.40
F811604000-060	4000	15	600	2309	2008.50	374.90
F811600500-080	500	1	800		264.00	-
F811600750-080	750	2	800	433	546.40	157.50
F811601000-080	1000	3	800	577	635.10	159.80
F811601250-080	1250	4	800	722	725.30	178.30
F811601500-080	1500	5	800	866	882.50	196.70
F811601750-080	1750	6	800	1010	972.70	227.40
F811602000-080	2000	7	800	1155	1061.50	235.90
F811602250-080	2250	8	800	1299	1220.10	258.10
F811602500-080	2500	9	800	1443	1308.90	263.00
F811602750-080	2750	10	800	1588	1399.00	269.20
F811603000-080	3000	11	800	1732	1597.40	274.20
F811603250-080	3250	12	800	1876	1681.30	280.30
F811603500-080	3500	13	800	2021	1965.80	367.60
F811603750-080	3750	14	800	2165	2033.10	372.40
F811604000-080	4000	15	800	2309	2100.40	374.90

Custom made versions on request

Staircases

Staircase with tilt 45°

Complies with standard EN ISO 14122-2-3

Load capacity: 150 kg/m² on step

Aluminum staircase

Useful width: 600 and 800 mm

Anti-slip ribbed aluminum steps depth 230 mm

Fixed on ground by plates

Fixed on wall by plates

Delivery with an aluminum red lacquered handrail (RAL 3000)

Second handrail on request (see table below)



Reference	Height to serve (mm)	Number of steps	Steps width (mm)	Wall spacing (mm)	Price €	Price € Second handrail
F811450400-060	400	1	600	400	258.40	-
F811450600-060	600	2	600	600	550.40	193.00
F811450800-060	800	3	600	800	636.60	202.90
F811451000-060	1000	4	600	1000	797.90	207.80
F811451200-060	1200	5	600	1200	885.40	214.00
F811451400-060	1400	6	600	1400	972.70	220.00
F811451600-060	1600	7	600	1600	1060.20	226.30
F811451800-060	1800	8	600	1800	1147.70	232.30
F811452000-060	2000	9	600	2000	1307.60	288.80
F811452200-060	2200	10	600	2200	1387.00	294.90
F811452400-060	2400	11	600	2400	1417.80	301.10
F811452600-060	2600	12	600	2600	1505.40	307.10
F811452800-060	2800	13	600	2800	1592.70	313.30
F811453000-060	3000	14	600	3000	1927.10	412.80
F811453200-060	3200	15	600	3200	1955.60	417.80
F811450400-080	400	1	800	400	265.30	-
F811450600-080	600	2	800	600	563.80	193.00
F811450800-080	800	3	800	800	658.00	202.90
F811451000-080	1000	4	800	1000	826.10	207.80
F811451200-080	1200	5	800	1200	920.20	214.00
F811451400-080	1400	6	800	1400	1014.50	220.00
F811451600-080	1600	7	800	1600	1108.50	226.30
F811451800-080	1800	8	800	1800	1202.60	232.30
F811452000-080	2000	9	800	2000	1370.70	288.80
F811452200-080	2200	10	800	2200	1467.60	294.90
F811452400-080	2400	11	800	2400	1486.40	301.10
F811452600-080	2600	12	800	2600	1580.50	307.10
F811452800-080	2800	13	800	2800	1715.00	313.30
F811453000-080	3000	14	800	3000	2019.00	412.80
F811453200-080	3200	15	800	3200	2053.90	417.80

Custom made versions on request

Staircases with bearing

Staircase with bearing - tilt 60°

Complies with standard EN ISO 14122-2-3

Load capacity : 200 kg/m² on bearing

Aluminum staircase

Bearing length : 600 mm - checkered flat sheet aluminum coating

Useful width : 600 and 800 mm

Anti-slip ribbed aluminum steps depth 180 mm

Fixed on ground by plates

Fixed on wall by plates

Delivery with an aluminum red lacquered handrail (RAL 3000)

Second handrail on request



Reference	Height to serve (mm)	Number of steps	Steps width (mm)	Wall spacing (mm)	Price €	Price € Second handrail
F812600500-060	500	2	600	880	701.00	-
F812600750-060	750	3	600	1026	1177.10	277.80
F812601000-060	1000	4	600	1170	1260.50	282.50
F812601250-060	1250	5	600	1314	1341.30	285.20
F812601500-060	1500	6	600	1458	1423.40	291.20
F812601750-060	1750	7	600	1602	1576.50	341.70
F812602000-060	2000	8	600	1746	1660.00	346.50
F812602250-060	2250	9	600	1890	1742.10	352.70
F812602500-060	2500	10	600	2034	1872.90	357.60
F812602750-060	2750	11	600	2178	1962.10	362.50
F812603000-060	3000	12	600	2322	2117.30	414.10
F812603250-060	3250	13	600	2466	2206.40	419.10
F812603500-060	3500	14	600	2610	2430.20	460.60
F812603750-060*	3750	15	600	2754	2813.90	464.40
F812604000-060*	4000	16	600	2898	2905.30	470.70
F812600500-080	500	2	800	880	731.90	-
F812600750-080	750	3	800	1026	1214.80	277.80
F812601000-080	1000	4	800	1170	1303.50	282.50
F812601250-080	1250	5	800	1314	1391.00	285.20
F812601500-080	1500	6	800	1458	1479.70	291.20
F812601750-080	1750	7	800	1602	1638.60	341.70
F812602000-080	2000	8	800	1746	1727.20	346.50
F812602250-080	2250	9	800	1890	1817.40	352.70
F812602500-080	2500	10	800	2034	1817.40	357.60
F812602750-080	2750	11	800	2178	1947.80	362.50
F812603000-080	3000	12	800	2322	2043.50	414.10
F812603250-080	3250	13	800	2466	2203.90	419.10
F812603500-080	3500	14	800	2610	2298.40	460.60
F812603750-080*	3750	15	800	2754	2930.90	464.40
F812604000-080*	4000	16	800	2898	3029.10	470.70

*With foot - Custom made versions on request

Staircases with bearing

Staircase with bearing - tilt 45°

Complies with standard EN ISO 14122-2-3

Load capacity : 200 kg/m² on bearing

Aluminum staircase

Bearing length : 600 mm - checkered flat sheet aluminum coating

Useful width : 600 and 800 mm

Anti-slip ribbed aluminum steps depth 230 mm

Fixed on ground by plates

Fixed on wall by plates

Delivery with an aluminum red lacquered handrail (RAL 3000)

Second handrail on request



Reference	Height to serve (mm)	Number of steps	Steps width (mm)	Wall spacing (mm)	Price €	Price € Second handrail
F812450400-060	400	2	600	1000	665.10	-
F812450600-060	600	3	600	1200	1166.30	260.70
F812450800-060	800	4	600	1400	1211.80	292.60
F812451000-060	1000	5	600	1600	1300.70	303.60
F812451200-060	1200	6	600	1800	1383.30	309.70
F812451400-060	1400	7	600	2000	1535.40	366.20
F812451600-060	1600	8	600	2200	1616.70	373.50
F812451800-060	1800	9	600	2400	1699.20	379.70
F812452000-060	2000	10	600	2600	1781.70	385.80
F812452200-060	2200	11	600	2800	1856.60	390.90
F812452400-060	2400	12	600	3000	1987.60	449.70
F812452600-060	2600	13	600	3200	2072.90	455.80
F812452800-060	2800	14	600	3400	2159.50	460.60
F812453000-060*	3000	15	600	3600	2663.40*	508.70
F812453200-060*	3200	16	600	3800	2753.60*	516.00
F812450400-080	400	2	800	1000	695.60	-
F812450600-080	600	3	800	1200	1203.10	260.70
F812450800-080	800	4	800	1400	1255.00	292.60
F812451000-080	1000	5	800	1600	1350.10	303.60
F812451200-080	1200	6	800	1800	1439.00	309.70
F812451400-080	1400	7	800	2000	1597.60	366.20
F812451600-080	1600	8	800	2200	1686.50	373.50
F812451800-080	1800	9	800	2400	1775.30	379.70
F812452000-080	2000	10	800	2600	1864.20	385.80
F812452200-080	2200	11	800	2800	1987.60	390.90
F812452400-080	2400	12	800	3000	2111.80	449.70
F812452600-080	2600	13	800	3200	2168.30	455.80
F812452800-080	2800	14	800	3400	2259.70	460.60
F812453000-080*	3000	15	800	3600	2777.60*	508.70
F812453200-080*	3200	16	800	3800	2874.00*	516.00

*With foot - Custom made versions on request

Double access staircases

Equal double access staircase with tilt 45° or 60°

Complies with standard EN ISO 14122-2-3

Load capacity: 200 kg/m² on bearing

Aluminum staircase

Bearing length: 600, 800, 1000, 1200 and 1400 mm - checkered flat sheet aluminum coating

Useful width: 600 and 800 mm

Anti-slip ribbed aluminum steps depth 180 mm (for 60° model) and 230 mm (for 45° model)

Fixed on ground by plates

Delivery with aluminum red lacquered handrails (RAL 3000)



Reference	Bearing height (mm)	Number of steps	Steps width (mm)	Tilt	Price € length 600	Price € length 800	Price € length 1000	Price € length 1200	Price € length 1400
F813600500-060-XXX	500	2	600	60	2041.90	2107.80	2173.80	2239.60	2305.40
F813600750-060-XXX	750	3	600	60	2222.10	2288.10	2353.90	2419.90	2485.70
F813601000-060-XXX	1000	4	600	60	2400.90	2467.00	2532.90	2598.60	2664.70
F813601250-060-XXX	1250	5	600	60	2569.10	2635.10	2701.00	2766.90	2841.10
F813600500-080-XXX	500	2	800	60	2078.30	2152.30	2226.20	2300.10	2374.10
F813600750-080-XXX	750	3	800	60	2269.30	2343.20	2417.20	2491.20	2565.00
F813601000-080-XXX	1000	4	800	60	2461.50	2535.50	2609.50	2683.40	2757.30
F813601250-080-XXX	1250	5	800	60	2641.80	2715.70	2789.80	2863.70	2937.60
F813450500-060-XXX	500	2	600	45	2241.00	2306.90	2372.80	2438.70	2504.50
F813450750-060-XXX	750	3	600	45	2457.60	2523.40	2589.20	2655.20	2721.30
F813451000-060-XXX	1000	4	600	45	2692.90	2758.80	2824.60	2890.60	2956.50
F813451250-060-XXX	1250	5	600	45	2900.00	2965.80	3031.90	3097.80	3163.50
F813450500-080-XXX	500	2	800	45	2288.10	2362.00	2436.10	2270.60	2584.00
F813450750-080-XXX	750	3	800	45	2520.70	2594.60	2668.70	2742.70	2816.60
F813451000-080-XXX	1000	4	800	45	2770.90	2844.80	2918.90	2992.90	3066.70
F813451250-080-XXX	1250	5	800	45	2991.40	3065.60	3139.60	3213.30	3287.40

Reference: add -060 for bearing length 600 mm, -080 for bearing length 800 mm, etc.

Height under bearing = Bearing height - 100 mm

Double access staircases

Unequal double access staircase with tilt 60°

Complies with standard EN ISO 14122-2-3

Load capacity : 200 kg/m² on bearing

Aluminum staircase

Bearing length : 800 mm - checkered flat sheet aluminum coating

Useful width : 600

Anti-slip ribbed aluminum steps depth 180 mm

Fixed on ground by plates

Delivery with aluminum red lacquered handrails (RAL 3000)

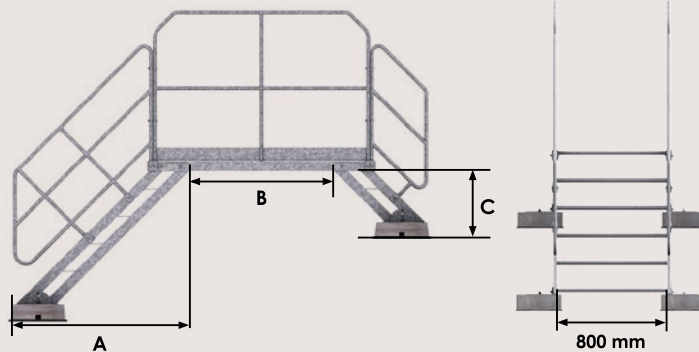


	Number of steps	2	3	4	5	6	7
Number of steps	Bearing height (mm)	500	750	1000	1250	1500	1750
2	500	2107.80 €					
	Reference	F814050050-060-060					
3	750	2198.00 €	2288.10 €				
	Reference	F814050075-060-060	F814075075-060-060				
4	1000	2288.10 €	2378.30 €	2467.00 €			
	Reference	F814050100-060-060	F814075100-060-060	F814100100-060-060			
5	1250	2378.30 €	2467.00 €	2559.70 €	2635.10 €		
	Reference	F814050125-060-060	F814075125-060-060	F814100125-060-060	F814125125-060-060		
6	1500	2467.00 €	2702.30 €	2649.80 €	2729.30 €	2819.30 €	
	Reference	F814050150-060-060	F814075150-060-060	F814100150-060-060	F814125150-060-060	F814150150-060-060	
7	1750	2702.30 €	2792.50 €	2883.90 €	2956.50 €	3046.50 €	3274.00 €
	Reference	F814050175-060-060	F814075175-060-060	F814100175-060-060	F814125175-060-060	F814150175-060-060	F814175175-060-060

Height under bearing = Bearing height - 100 mm

Double access platforms

NEW



EDALU 45

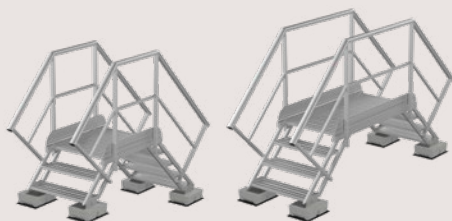
Complies with standards EN 85-013, EN 85-015 and EN 14122-3 - Load capacity 250 kg

EDALU 45 is a modular double access platform designed to cross firewalls, expansion joints, pipes, ventilation pipes, low walls or any low obstacle in a technical environment. These double access staircases can be adapted to all configurations encountered on the terraces. Equal or unequal height of level, adaptable to all the widths of parapet landing, fixing of the feet on counterweight.

- Staircase on counterweight (no ground fixing)
- Quick installation
- Adjustable and tilting feet system
- Reduced weight

TECHNICAL CHARACTERISTICS

- Raw aluminum
- Step width: 800 mm
- Lap: 200 mm
- Tilt: 45°
- Step depth: 250 mm
- Ramp: ergonomic profile
- Stringer: double profile
- Steps and platform: anti-slip aluminum sheet
- Counterweight of 25 kg (per unit)



Staircase

Steps number	A (mm) Footprint	C (mm) - Height under platform	Weight (kg)*
2	670	500 to 570	11.00
3	870	700 to 770	14.30
4	1070	900 to 970	19.00
5	1270	1100 to 1170	22.70
6	1470	1300 to 1370	26.20
7	1670	1500 to 1570	29.60
8	1870	1700 to 1770	33.10

*Staircase + 2 guardrails + 2 plates - Concrete counterweight not included (25 kg/unit)

Platforms

Length (mm)	B (mm) Space under platform	Weight (kg)*
1000	548	17.00
1500	1048	23.20

*Platform + 2 guardrails

EDALU 60

Complies with standards EN 85-013, EN 85-015 and EN 14122-3 - Load capacity 250 kg

EDALU 60 is an aluminum modular double access platform. It has been designed for use over firewalls, expansion joints, expansion joints, ventilation pipes, conveyors, low walls or any low obstacle. It is designed for maintenance and operating staff in a technical environment.

DESIGN

EDALU 60 is made of aluminum profile 6060 and is protected against corrosion. It is delivered unassembled and can be quickly assembled with just a few screws.

Another advantage is that its low weight allows access through skylights or other small openings. 4 counterweights of 25 kg are enough to ensure its stability.

TECHNICAL CHARACTERISTICS

- Equal or unequal access
- Step width: 800 mm
- Tilt: 60°
- Step depth: 150 mm
- 3 different platform length: 900, 1500 and 2100 mm
- Ground pad or on counterweight mounting plate (to protect the waterproofing of roof terraces not accessible to the public)
- Steps and platform: anti-slip aluminum sheet
- Counterweight of 25 kg (per unit)



Staircase

Steps number	A (mm) Footprint	C (mm) - Height under platform	Weight (kg)*
2	528	540 to 572	5.92
3	644	740 to 772	8.17
4	760	940 to 972	10.41
5	875	1140 to 1172	12.65
6	990	1340 to 1372	14.89
7	1106	1540 to 1572	18.26

*Staircase only

Platforms

Length (mm)	B (mm) Space under platform	Weight (kg)*
900	668	20.20
1500	1276	28.10
2100	1884	35.36

*Platform only

EDACIER 45

Complies with standards EN 85-013, EN 85-015 and EN 14122-3 - Load capacity 250 kg

EDACIER 45 is a modular double access platform, designed to cross firewalls, expansion joints, pipes, ventilation pipes, low walls or any low obstacle in a technical environment. These double access staircases can be adapted to all configurations encountered on the terraces.

Equal or unequal height of level, adaptable to all the widths of parapet landing, fixing of the feet on counterweights.

- Staircase on counterweights (no ground fixing)
- Quick installation
- Adjustable and tilting feet system
- Rubber pad under the counterweights

TECHNICAL CHARACTERISTICS

- Steel S 235I
- Step width: 800 mm
- Lap: 200 mm
- Tilt: 45°
- Step depth: 250 mm
- Ramps: Ø 27 mm
- Stringer: pipe
- Finishing: hot-dip galvanizing
- Steps and platform: perforated anti-slip steel sheet
- Counterweight of 32.5 kg

Packaging: material delivered dismounted in kit with instructions (on pallet)



Staircase

Steps number	A (mm) Footprint	C (mm) - Height under platform	Weight (kg)*
2	500	508 to 577	34.50
3	700	708 to 777	45.50
4	900	908 to 977	57.00
5	1100	1108 to 1177	69.50
6	1300	1308 to 1377	81.50
7	1500	1508 to 1577	92.00
8	1700	1708 to 1777	104.00

*Staircase + 2 guardrails + 2 plates - Concrete counterweight not included (32.5 kg/unit)

Platforms

Length (mm)	B (mm) Space under platform	Weight (kg)*
1000	556	40.50
1500	1056	65.50

*Platform + 2 guardrails

Create your double access staircase by adapting it to your needs.

Go to our online **CONFIGURATOR** via our website www.fortal.fr or by scanning the QG code



Mobile scaffolds

Mobile scaffold ERIS

Complies with standard EN 1004-1 (models 110 - 120 - 130 - 140)

Load capacity: 200 kg/m²

Cost effective generation of mobile scaffold adapted for the industry and for finishing trades - working height up to 7.35 m.

It can be used for all indoor and outdoor works.

Quick assembly without tools.

Upper and intermediary deck (from model 130)

- Aluminum and plywood trapdoor decks with removable and foldable baseboard.

Assembly on inclined plan possible.



Model	ERIS 100	ERIS 105	ERIS 110	ERIS 120	ERIS 130	ERIS 140
Deck height (m) - Length 2 m	0.80	1.80	2.60	3.60	4.35	5.35
Working height	2.80	3.80	4.60	5.60	6.35	7.35
Intermediary decks	-	-	-	-	1	1
Scaffold height (m)	2.12	3.12	3.85	4.85	5.60	6.60
Total weight (kg)	33.00	66.00	94.00	101.50	133.50	144.50
Composition						
Designation						
Clip pin 8 x 50	-	4	4	8	8	12
Standard frame 2000	1	1	1	1	1	1
Wheels Ø 150 mm (350 kg) mounted upon steel jack screw 500	-	-	4	4	4	4
Wheels Ø 125 mm mounted on a sheath	4	4	-	-	-	-
Aluminum braces 2000 - profiles 65 x 25	-	1	2	2	2	4
Ladder 1000 x 720	-	2	-	2	-	2
Ladder 1750 x 720	-	-	2	2	4	4
Ladder 1750 x 720 for scaffold base	2	2	2	2	2	2
Aluminum rail 2000 - profiles 65 x 25	-	5	5	9	9	9
Trapdoor deck 2000 x 596	-	1	1	2	2	2
Deck 2000 x 596	1	-	-	-	-	-
Foldable baseboard 2000 x 596	-	1	1	1	1	1
Foldable bracket	-	-	-	1	1	1
Stabilizers large model	-	-	4	4	4	4
Stabilizers small model	-	4	-	-	-	-
Reference	F070100100	F070100105	F070100110	F070100120	F070100130	F070100140
Price (€), length between axes 2 m	713.90	1736.10	2261.20	2903.60	3057.60	3419.10

Mobile scaffold NOVA

Complies with standard EN 1004-1 (models 120 - 130 - 140 - 150)

Load capacity: 200 kg/m²

Mobile and foldable aluminum scaffold adapted for the industry and for finishing trades - working height up to 8 m. It can be used for all indoor and outdoor works.

Quick assembly without tools and by only one person.

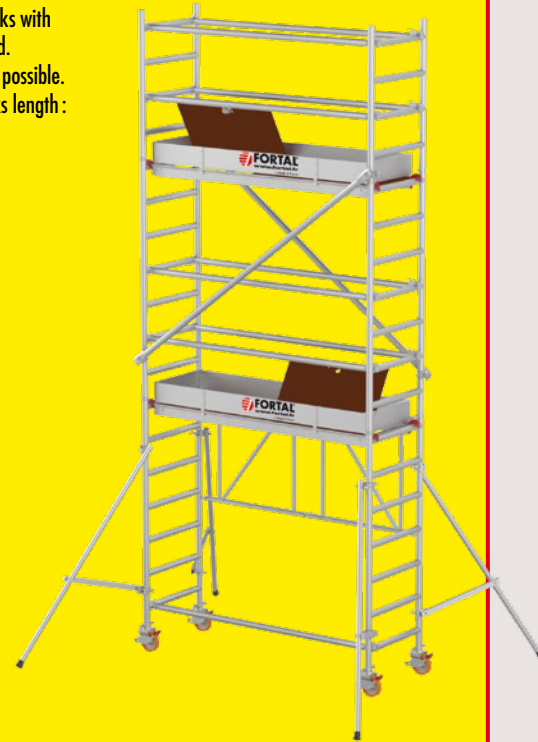
Passage of the foldable frame into standard doors.

Upper and intermediary deck : aluminum and plywood trapdoor decks with removable steel baseboard.

Assembly on inclined plan possible.

Available in different decks length :

2.00, 2.50 and 3.00 m



Model		00	10	20	30	40	50	60
Deck height (m)		0.8	2	2.9	4	5	5.8	7.6
Working height		2.8	4	4.9	6	7	7.8	9.6
Intermediary decks		-	-	-	1	1	2	2
Scaffold height (m)		2.1	3.3	4.2	5.3	6.3	7.1	8.9
Total weight (kg)	Length 2 m	37.30	92.76	113.96	155.32	163.78	174.68	188.68
	Length 2.5 m	43.20	102.46	123.66	171.72	180.18	191.08	205.08
	Length 3 m	46.30	109.13	130.33	184.23	192.69	205.03	219.03
Composition								
Designation		Ref. length						
Clip pin 8 x 50		-	4	4	8	12	12	16
Diagonal brace		-	1	1	2	2	4	4
Rail		-	5	5	9	9	13	13
Ladder 1024 x 665		-	2	-	2	4	2	2
Ladder 1792 x 665		-	-	2	2	2	4	6
Foldable base		1	1	1	1	1	1	1
Wheels Ø125 mm mounted on a sheath		4	4	-	-	-	-	-
Wheels Ø150 mm (350 kg) mounted upon steel jack screw 500		-	-	4	4	4	4	4
Stabilizers small model		-	4	4	4	4	4	-
Stabilizers large model		-	-	-	-	4	4	4
Foldable baseboard		-	1	1	1	1	1	1
Deck width 596		1	-	-	-	-	-	-
Trapdoor deck width 596		-	1	1	2	2	3	3
Foldable bracket		-	-	1	1	1	1	1
Price (€), length between axes 2 m	F0700001+	896.70	2146.70	2615.00	3537.50	3809.20	4539.30	4944.80
Price (€), length between axes 2.5 m*	F0700004+	1025.30	2315.80	2784.00	3749.20	4335.20	4935.80	5341.40
Price (€), length between axes 3 m*	F0700002+	1058.70	2401.70	2869.80	3892.20	4479.60	5135.20	5540.80

*Manufacturing to order

To obtain the product reference: add the model number after the length reference.

Mobile scaffolds

Mobile scaffold SATURNE 870 and 1300

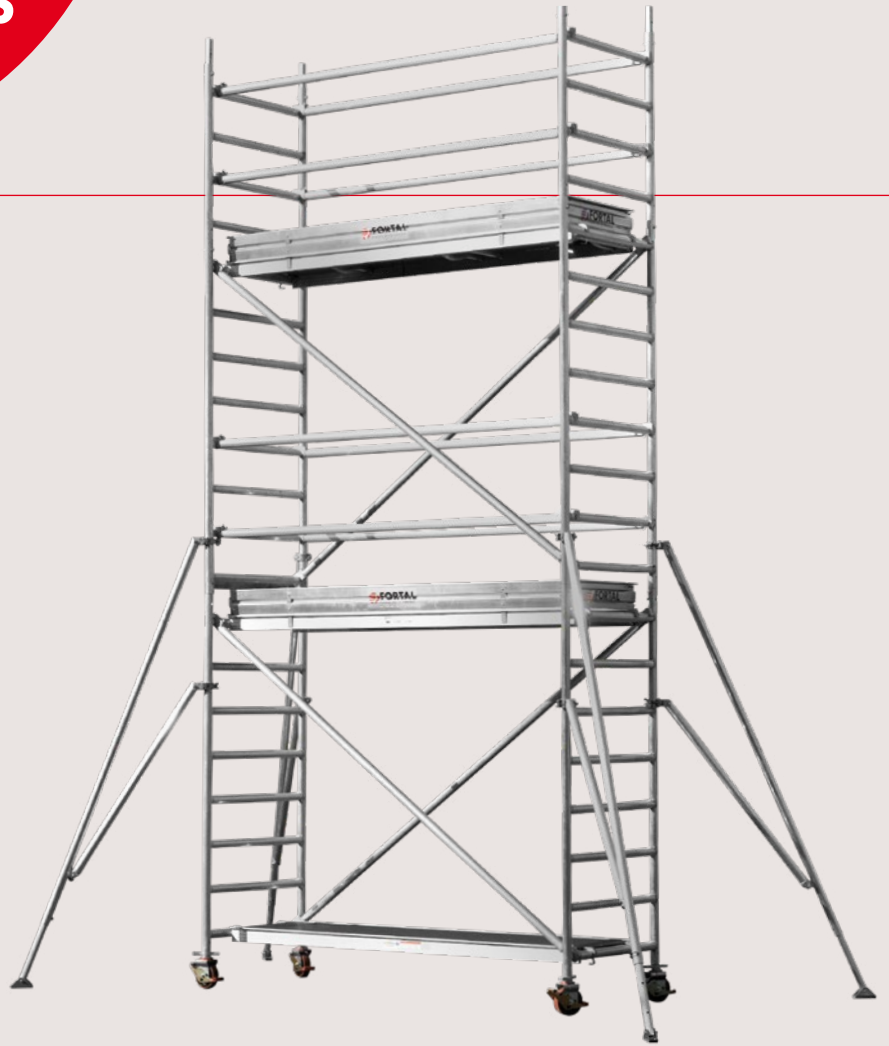
Complies with standard EN 1004-1 (deck height < 12 m)

Load capacity: 200 kg/m²

Mobile aluminum scaffold adapted for the industry and for finishing trades - working height from 5.4 to 14.8 m. It can be used indoor (up to 12 m provide anchor) and outdoor (up to 8 m with wind < 45 km/h). Quick assembly without tools. Upper and intermediary deck : aluminum and plywood trapdoor decks with removable steel baseboard.

Available in different overall width from 0.97 to 1.40 m

Available in different decks length : 2.00, 2.50 and 3.00 m



SATURNE 870 - 28 configurations *Maximum deck height

Model	F07103	F07104	F07105	F07106	F07107	F07108	F07109	F07110	F07111	F07112
Length between deck axes (m)	2	2	2	2	2	2	2	2	-	-
	2.5	2.5	2.5	2.5	2.5	2.5	2.5	2.5	2.5	2.5
	3	3	3	3	3	3	3	3	3	3
Deck height (m)*	3.4	4.5	5.5	6.6	7.6	8.6	9.7	10.7	11.8	12.8
Working height (m)	5.4	6.5	7.5	8.6	9.6	10.6	11.7	12.7	13.8	14.8
Intermediary decks	-	-	1	1	1	2	2	2	3	3
Scaffold height (m)*	4.76	5.63	6.64	7.91	8.91	9.98	11.0	12.05	13.06	14.12
Total weight (kg)	Length 2 m	152.22	163.62	213.68	225.08	251.84	294.54	313.30	324.70	-
	Length 2.5 m	160.92	172.32	229.68	241.08	268.44	317.84	337.20	348.60	405.96
	Length 3 m	169.04	180.44	244.32	255.72	283.88	339.00	359.16	370.56	434.44
Composition										
Ladder 2.072 x 0.87 m	2	4	4	6	6	8	8	10	10	12
Ladder 1.036 x 0.87 m	4	2	4	2	4	2	4	2	4	2
Trapdoor deck width 650	1	2	2	3	3	4	4	5	5	6
Diagonal brace	4	4	6	6	8	8	10	10	12	12
Rail	4	8	8	12	12	16	16	20	20	24
Cross brace	1	1	1	1	1	1	1	1	1	1
Foldable baseboard	1	1	1	1	1	1	1	1	1	1
Wheel Ø 200 / 500 mm	-	-	-	-	4	4	4	4	4	4
Wheel Ø 150 / 350 mm	4	4	4	4	-	-	-	-	-	-
Stabilizers large model	4	4	4	4	4	4	4	4	4	4
Clip pin	8	8	12	12	16	16	20	20	24	24
Price (€), length 2 m	3222.60	3942.20	4361.50	5080.80	5589.30	6306.80	6726.70	7446.30	-	-
Price (€), length 2.5 m	3316.90	4085.10	4512.30	5280.30	5799.90	6564.40	6995.30	7762.20	8190.50	8957.60
Price (€), length 3 m	3401.30	4202.80	4645.10	5447.90	5981.50	6782.00	7226.90	8028.10	8470.40	9273.10

SATURNE 1300 - 28 configurations *Maximum deck height

Model	F07203	F07204	F07205	F07206	F07207	F07208	F07209	F07210	F07211	F07212
Length between deck axes (m)	2	2	2	2	2	2	2	2	-	-
	2.5	2.5	2.5	2.5	2.5	2.5	2.5	2.5	2.5	2.5
	3	3	3	3	3	3	3	3	3	3
Deck height (m)*	3.4	4.5	5.5	6.6	7.6	8.6	9.7	10.7	11.8	12.8
Working height (m)	5.4	6.5	7.5	8.6	9.6	10.6	11.7	12.7	13.8	14.8
Intermediary decks	-	-	1	1	1	2	2	2	3	3
Scaffold height (m)*	4.76	5.63	6.64	7.91	8.91	9.98	11	12.05	13.06	14.12
Total weight (kg)	Length 2 m	188.52	203.52	270.68	285.68	308.04	367.84	390.20	405.20	-
	Length 2.5 m	200.22	215.22	292.78	307.78	330.74	400.34	423.30	438.30	515.86
	Length 3 m	209.94	224.94	310.72	325.72	349.48	426.50	450.26	465.26	551.04
Composition										
Ladder 2.072x1.3 m	2	4	4	6	6	8	8	10	10	12
Ladder 1.036 x 1.3 m	4	2	4	2	4	2	4	2	4	2
Trapdoor deck width 650	1	2	2	3	3	4	5	5	5	6
Standard deck width 500	1	2	2	3	3	4	5	5	5	6
Diagonal brace	4	4	6	6	8	8	10	10	12	12
Rail	4	8	8	12	12	16	20	20	20	24
Cross brace	1	1	1	1	1	1	1	1	1	1
Foldable baseboard	1	1	1	1	1	1	1	1	1	1
Wheel Ø 200 / 500 mm	4	4	4	4	4	4	4	4	4	4
Stabilizers large model	4	4	4	4	4	4	4	4	4	4
Clip pin	8	8	12	12	16	16	20	20	24	24
Price (€), length 2 m	3686.70	4621.30	5063.50	5996.70	6440.00	7542.80	8581.30	8750.00	-	-
Price (€), length 2.5 m	3782.10	4767.90	5217.40	6203.30	6657.60	7822.60	8908.00	9077.00	9436.30	10513.70
Price (€), length 3 m	3929.00	4995.10	5461.10	6527.80	6969.10	8059.90	9424.40	9604.60	10059.40	11771.30

Mobile scaffolds

Mobile scaffold JUPITER 870 and 1300 - Safety assembly

Complies with standard EN 1004-1 (deck height < 12 m)

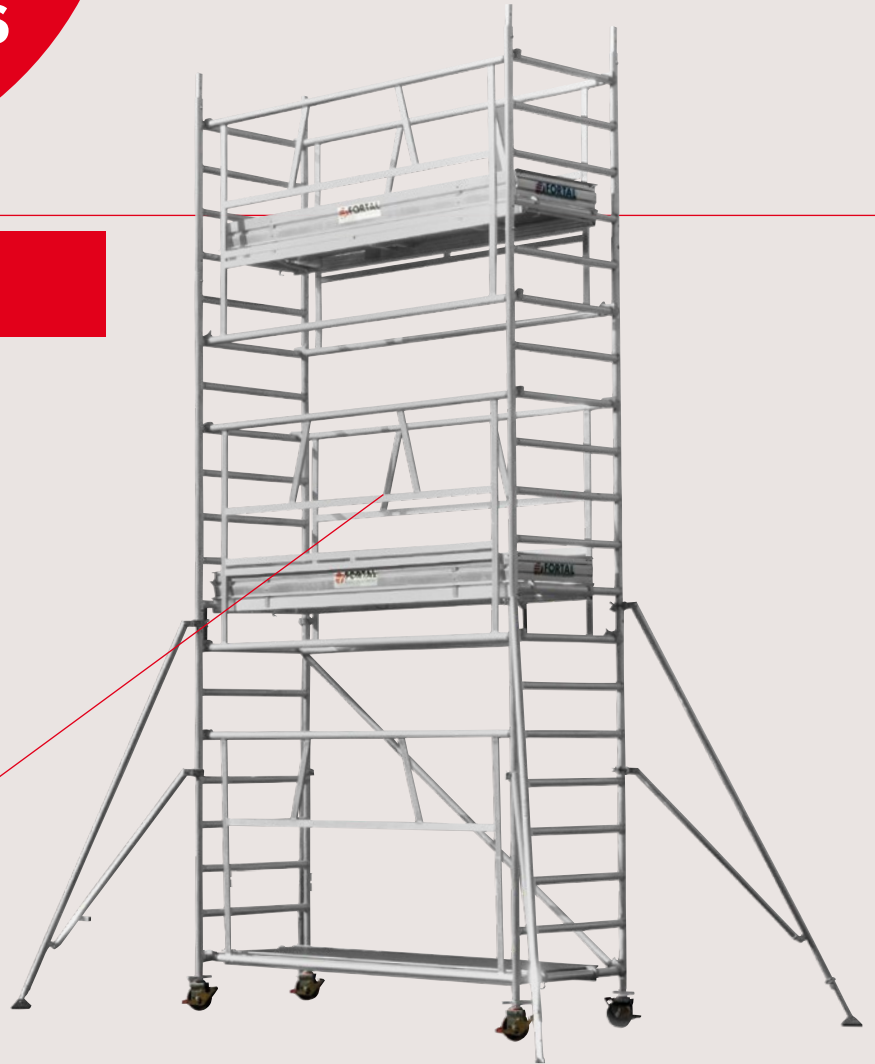
Load capacity: 200 kg / m²

Mobile aluminum scaffold adapted for the industry and for finishing trades - working height from 6.5 to 14.8 m. It can be used indoor (up to 12 m provide anchor) and outdoor (up to 8 m with wind < 45 km/h). Quick assembly without tools. Upper and intermediary deck : aluminum and plywood trapdoor decks with removable steel baseboard.

Available in different overall width from 0.97 to 1.40 m

Available in different decks length : 2.00, 2.50 and 3.00 m

Guardrail guarantees safety assembly



JUPITER 870 - 25 configurations *Maximum deck height

Model	F07604	F07605	F07606	F07607	F07608	F07609	F07610	F07611	F07612
Length between deck axes (m)	2	2	2	2	2	2	2	-	-
	2.5	2.5	2.5	2.5	2.5	2.5	2.5	2.5	2.5
	3	3	3	3	3	3	3	3	3
Deck height (m)*	4.5	5.5	6.6	7.6	8.6	9.7	10.7	11.8	12.8
Working height (m)	6.5	7.5	8.6	9.6	10.6	11.7	12.7	13.8	14.8
Intermediary decks	1	1	2	2	3	3	4	4	5
Scaffold height (m)*	5.4	6.3	7.5	8.4	9.8	10.4	11.9	12.5	13.9
	Length 2 m	222.68	245.28	291.74	322.34	368.80	391.40	437.86	-
Total weight (kg)	Length 2.5 m	246.88	272.28	326.24	359.64	413.60	439.00	492.96	518.36
	Length 3 m	269.98	298.08	359.14	395.24	456.30	484.40	545.46	573.56
Composition									
Ladder 2.072 x 0.87 m	2	4	4	6	6	8	8	10	10
Ladder 1.036 x 0.87 m	6	4	6	4	6	4	6	4	6
Trapdoor deck width 650	2	2	3	3	4	4	5	5	6
Mounting and working frame	5	6	7	8	9	10	11	12	13
Cross brace	1	1	1	1	1	1	1	1	1
Amovable baseboard	1	1	1	1	1	1	1	1	1
Wheel Ø 200 / 500 mm (kg)	-	-	-	4	4	4	4	4	4
Wheel Ø 150 / 350 mm (kg)	4	4	4	-	-	-	-	-	-
Stabilizers large model	4	4	4	4	4	4	4	4	4
Clip pin	12	12	16	16	20	20	24	24	28
Price (€), length 2 m	4242.10	4603.50	5362.70	5814.40	6571.90	6934.80	7692.40	-	-
Price (€), length 2.5 m	4423.30	4808.50	5611.80	6085.70	6888.80	7049.60	8077.40	8462.20	9265.70
Price (€), length 3 m	4679.70	5102.40	5966.60	6477.70	7342.00	7764.70	8628.90	9051.40	9915.80

JUPITER 1300 - 24 configurations *Maximum deck height

Model	F07504	F07505	F07506	F07507	F07508	F07509	F07510	F07511	F07512
Length between deck axes (m)	2	2	2	2	2	2	-	-	-
	2.5	2.5	2.5	2.5	2.5	2.5	2.5	2.5	2.5
	3	3	3	3	3	3	3	3	3
Deck height (m)*	4.5	5.5	6.6	7.6	8.6	9.7	10.7	11.8	12.8
Working height (m)	6.5	7.5	8.6	9.6	10.6	11.7	12.7	13.8	14.8
Intermediary decks	1	1	2	2	3	3	4	4	5
Scaffold height (m)*	5.4	6.3	7.5	8.4	9.8	10.4	11.9	12.5	13.9
	Length 2 m	302.28	365.84	392.04	455.60	481.80	545.36	-	-
Total weight (kg)	Length 2.5 m	334.98	408.94	437.94	511.90	540.90	614.86	643.86	717.82
	Length 3 m	339.88	447.44	479.14	562.10	593.80	676.76	708.46	791.42
Composition									
Ladder 2.072 x 1.3 m	2	4	4	6	6	8	8	10	10
Ladder 1.036 x 1.3 m	6	4	6	4	6	4	6	4	6
Trapdoor deck width 596	2	2	3	3	4	4	5	5	6
Standard deck width 500	2	2	3	3	4	4	5	5	6
Mounting and working frame	5	6	7	8	9	10	11	12	13
Cross brace	1	1	1	1	1	1	1	1	1
Amovable baseboard	1	1	1	1	1	1	1	1	1
Wheel Ø 200 / 500 mm (kg)	4	4	4	4	4	4	4	4	4
Stabilizers large model	4	4	4	4	4	4	4	4	4
Clip pin	12	12	16	16	20	20	24	24	28
Price (€), length 2 m	4913.90	5307.30	6273.80	6667.60	7634.20	8038.10	-	-	-
Price (€), length 2.5 m	5387.80	5803.20	6815.80	7229.10	8244.10	8655.90	10779.40	10086.40	11467.90
Price (€), length 3 m	5753.40	6206.30	7327.00	7780.00	8900.70	9352.10	10472.80	10925.90	12046.60

Mobile scaffolds

Mobile scaffold VENUS

Complies with standard EN 1004-1

Load capacity: 200 kg / m²

Mobile aluminum tower equipped with decks, staircase with guardrail spaced every 2.072 m and 4 stabilizers.

Adapted for the industry and for finishing trades.

Working height from 4.4 to 14.8 m.

It can be used indoor and outdoor.

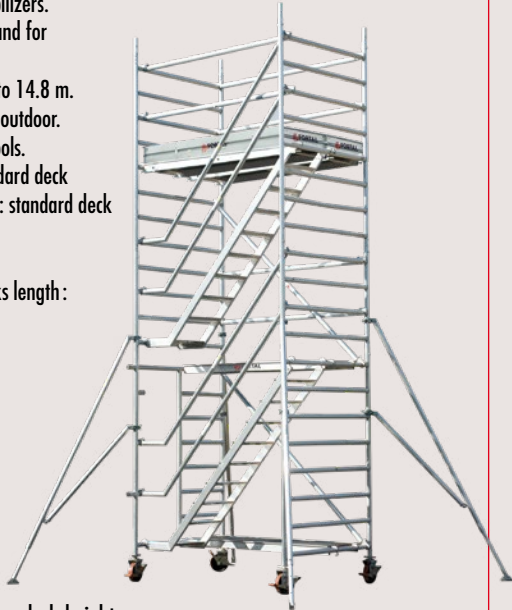
Quick assembly without tools.

Intermediary decks : Standard deck
2000 x 500 - Upper deck : standard deck
+ trapdoor deck.

Overall width : 1.4 m.

Available in different decks length :

2, 2.5 and 3 m



17 configurations *Maximum deck height

Model	F07402	F07404	F07406	F07408	F07410	F07412	
Length between deck axes (m)	2	2	2	2	2	-	
	2.5	2.5	2.5	2.5	2.5	2.5	
	3	3	3	3	3	3	
Deck height (m)*	2.4	4.4	6.5	8.5	10.7	12.8	
Working height	4.4	6.4	8.5	10.5	12.7	14.8	
Scaffold height (m)*	3.7	5.8	7.8	9.9	12.0	14.1	
Total weight (kg)	Length 2 m	152.61	265.32	343.23	421.14	499.05	-
	Length 2.5 m	165.72	285.44	370.36	455.28	540.20	625.12
	Length 3 m	176.29	301.62	392.15	482.68	573.21	663.74
Composition							
Open ladder 2.072 x 1.3 m	1	1	1	1	1	1	
Ladder 2.072 x 1.3 m	1	3	5	7	9	11	
Ladder 1.036 x 1.3 m	2	2	2	2	2	2	
Rail	4	6	8	10	12	14	
Staircase	1	2	3	4	5	6	
Handrail	2	4	6	8	10	12	
Trapdoor deck width 596	1	1	1	1	1	1	
Standard deck width 500	2	3	4	5	6	7	
Foldable baseboard	1	1	1	1	1	1	
Wheel Ø 200 / 500 mm (kg)	4	4	4	4	4	4	
Stabilizers large model	-	4	4	4	4	4	
Vertical diagonal brace	1	2	3	4	5	6	
Clip pin	4	8	12	16	20	24	
Price (€), length 2 m	2988.60	5297.70	6804.90	8312.30	9819.50	-	
Price (€), length 2.5 m	3147.90	5580.40	7210.80	8841.40	10472.00	12102.50	
Price (€), length 3 m	3286.40	5790.90	7493.50	9196.10	10900.00	12602.60	

Mobile scaffold URANUS - Safety assembly

Complies with standard EN 1004-1

Load capacity: 200 kg / m²

Mobile aluminum tower equipped with decks, staircase with guardrail spaced every 2.072 m and 4 stabilizers.

Adapted for the industry and for finishing trades.

Working height from 4.4 to 14.8 m.

It can be used indoor and outdoor.

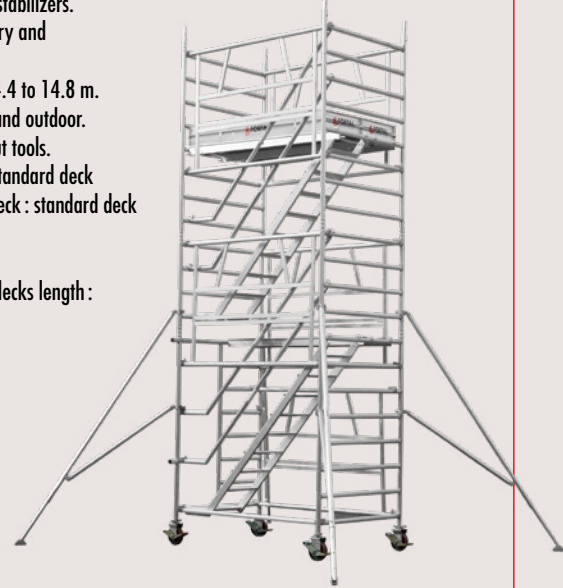
Quick assembly without tools.

Intermediary decks : Standard deck
2000 x 500 - Upper deck : standard deck
+ trapdoor deck.

Overall width : 1.4 m.

Available in different decks length :

2, 2.5 and 3 m



17 configurations *Maximum deck height

Model	F07302	F07304	F07306	F07308	F07310	F07312	
Length between deck axes (m)	2	2	2	2	2	-	
	2.5	2.5	2.5	2.5	2.5	2.5	
	3	3	3	3	3	3	
Deck height (m)*	2.4	4.4	6.5	8.5	10.7	12.8	
Working height	4.4	6.4	8.5	10.5	12.7	14.8	
Scaffold height (m)*	3.7	5.8	7.8	9.9	12.0	14.1	
Total weight (kg)	Length 2 m	185.61	313.32	406.23	499.14	592.05	-
	Length 2.5 m	207.62	346.64	450.86	555.08	659.30	763.52
	Length 3 m	227.27	376.24	490.41	604.58	718.75	832.92
Composition							
Open ladder 2.072 x 1.3 m	1	1	1	1	1	1	
Ladder 2.072 x 1.3 m	1	3	5	7	9	11	
Ladder 1.036 x 1.3 m	2	2	2	2	2	2	
Mounting and working frame	4	6	8	10	12	14	
Staircase	1	2	3	4	5	6	
Handrail	2	4	6	8	10	12	
Trapdoor deck width 596	1	1	1	1	1	1	
Standard deck width 500	1	2	3	4	5	6	
Foldable baseboard	1	1	1	1	1	1	
Wheel Ø 200 / 500 mm (kg)	4	4	4	4	4	4	
Stabilizers large model	-	4	4	4	4	4	
Clip pin	4	8	12	16	20	24	
Price (€), length 2 m	3502.40	6091.70	7748.40	9470.30	11192.40	-	
Price (€), length 2.5 m	3721.40	6396.40	8269.30	10142.30	12013.70	13886.70	
Price (€), length 3 m	3991.40	6799.50	8806.80	10814.10	12821.50	14837.10	

Mobile scaffolds

Hedge trimmers scaffold

Load capacity: 200 kg/m²

Mobile aluminum scaffold designed for hedge trimming for working height from 3.5 to 4.25 m. Quick assembly without tools.

Aluminum / plywood deck equipped with patented FORTAL polyamid coated steel body hook.

Height adjustable solid wheels Ø260 mm mounted upon a rod adapt for difficult floor.

Deck length : 2 m.



Gap configuration

Model	F077000014	F077000015
Deck length (m)	2.0	2.0
Deck height (m)	1.5	2.25
Working height (m)	3.5	4.25
Scaffold height (m)	2.57	3.32
Total weight (kg)	61.00	68.00
Clip pin 8 x 50	8	8
Foldable base	1	1
Wheels Ø260 mm	2	2
Diagonal brace 2000 - standard 65 x 25	0	1
Vertical ladder 1000 x 720	2	0
Vertical ladder 1750 x 720	0	2
Rail 2000 - standard 65 x 25	5	5
Standard deck 2000 x 596	1	1
Aluminum jack 800	2	2
Vertical ladder 1000 x 720	1	1
Open ladder with safety gate	1	1
Stabilizer small model	2	2
Price (€)	1721.00	1849.90

"Special stairs" scaffold tower

Load capacity: 200 kg/m²

Aluminum and steel staircase scaffold efficiently adapting to all indoor work up to a working height of 3 and 5 m.

Quick assembly without tools.

Fitted with jack feet to adjust the height - each foot can be placed on a different step.

Overall length : 1.1 m

Overall width : 0.75 m



Model			F103100001	F103100003
Length between deck axes (m)			1	1
Deck height (m)			1	3
Working height (m)			3	5
Scaffold height (m)			2.05	4.05
Total weight (kg)			56.60	109.20
Composition / Description	Reference	Weight (kg)	Quantity	Quantity
Galvanised jack 800 + pad	Q700020008	3.90	4	4
Stainless steel pin for Ø49 tube	A700110016	0.09	4	8
Stainless steel pin for Ø60 tube	A700110017	0.10	4	4
Steel baseboard 950/1000 aluminum / plywood	F040191000	1.85	1	2
Steel baseboard offset 650	F040220650	1.55	1	2
Aluminum access ladder Ø49 - length 2000	F040522000	4.20	-	1
½ aluminum arch frame 1000 x 650 steel sleeve	F100200650	5.60	-	2
Aluminum pole 1000 steel sleeve	F100611000	2.10	-	4
Steel safety rail 650 x 500	F061050650	4.20	1	2
Steel safety rail 1000 x 500	F061051000	5.20	1	2
One-piece aluminum baseplate	F102500005	12.80	1	1
Aluminum pole 800	F102500007	1.50	4	4
Standard platform crimped 1000 x 595 - rect. hook + notch	P1000/595MO-SP1	8.60	1	1
Offset trapdoor platform crimped 1000 x 595 - rect. hook	PTD1000/595M1	10.90	-	1
Alu diagonal brace with fitting 1.95 m x 2	F111701950	4.80	-	1
Price (€)			1269.90	2482.90

Options	Reference	Weight (kg)	Price €
Aluminum bracket 400	F101400400	2.60	122.40
Interplatform support 650	F101900650	1.10	57.20
Standard deck 1000 x 345	P1000/345N0	7.00	137.30
Stabilizer small model	F079700002	6.60	166.50

Options

Crane kit for easy handling on worksites

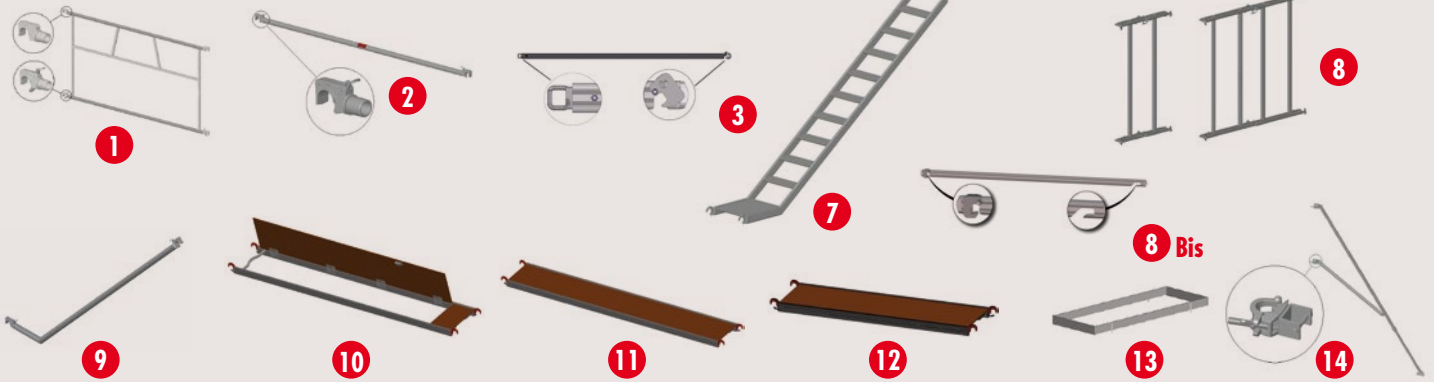
Reference	Composition	Weight, kg	Price €
F079750005	4 galvanised canisters + bolts for anchorage to structure + 4 straps with clips to secure the wheels	3.87	182.60

For ERIS - NOVA - SATURN and JUPITER scaffolds



Spare parts

Spare parts



Designation	Ref.	ERIS	NOVA	SATURNE	JUPITER	VENUS	URANUS	SPECIAL TAILLE HAIRES	Repare	Weight, kg	Price per unit €
Steel anchorage (anchor 1000 + fitting with claw)	F060411000									6.30	86.10
Mounting and operating framework 2 m	F078502000								1	11.80	223.40
Mounting and operating framework 2.5 m	F078502500									14.00	245.40
Mounting and operating framework 3 m	F078503000									16.90	283.10
Base frame	F078532000									3.60	75.20
Clip tube, bidromed 8 x 50	A710810050									0.04	8.40
Diagonal brace with fitting 2000 x 1536	F078552000									2.60	91.70
Diagonal brace with fitting 2500 x 1536	F078552500									2.60	97.30
Diagonal brace with fitting 3000 x 1536	F078553000									3.32	97.30
Diagonal brace for scaffolding 2 m	F078322000									3.00	85.00
Diagonal brace for scaffolding 2.5 m	F078322500									3.30	90.30
Diagonal brace for scaffolding 3 m	F078323000								2	3.70	97.30
Diagonal alu brace 2000 65 x 25	F078362000								3	2.20	53.00
Ladder 2072 x 870 (8 rungs)	F079362072								4	12.80	184.50
Ladder 2072 x 1300 (8 rungs)	F079412072								4	11.40	210.90
End ladder 1036 x 870 (4 rungs)	F079361036								5	6.20	115.30
End ladder 1036 x 1300 (4 rungs)	F079411036								5	8.20	126.50
Open ladder 2072 x 1300 (8 rungs)	F079482072								6	13.40	341.20
Vertical ladder 1024 x 665	F079261024									4.15	124.90
Vertical ladder 1792 x 665	F079261792									7.00	186.10
Vertical ladder 1000 x 720 (4 rungs)	F079291000									3.20	118.20
Vertical ladder 1750 x 720 (7 rungs)	F079291750									5.50	156.80
Open ladder + safety gate 1200 x 720 (2 rungs)	F079300005									5.50	213.70
Ladder 1200 x 720 (5 rungs)	F079300010									4.00	122.40
Foldable base large model 2000	F079592000									19.20	572.40
Foldable base large model 2500	F079592000 + F079990004									21.70	677.70
Foldable base large model 3000	F079592000 + F079990003									22.20	688.80
Foldable base small model (height = 1.3 m)	F079582000									15.45	428.50
Staircase 1 bearing 2000 x 1813	F079852000									15.60	441.00
Staircase 1 bearing 2500 x 1813	F079852500									19.20	526.70
Staircase 1 bearing 3000 x 1813	F079853000								7	21.00	547.40
Removable bracket for scaffold	F079710006									1.30	41.80
2.5 m foldable kit	F079990004								8	2.50	105.60
3 m foldable kit	F079990003								8	3.00	116.80
Diagonal alu brace 2000 with claw	F078852000									2.20	73.70
Diagonal alu brace 2500 with claw	F078852500									2.70	80.70
Diagonal alu brace 3000 with claw	F078853000									3.03	83.40
Diagonal alu brace 2000 65 x 25	F078702000								8bis	1.50	39.30
Cross brace 2000 x 870	F079162000									5.70	127.80
Cross brace 2500 x 870	F079162500									6.10	138.90
Cross brace 3000 x 870	F079163000									6.90	144.40
Cross brace 2000 x 1300	F079212000									5.70	132.00
Cross brace 2500 x 1300	F079212500									6.40	143.00
Cross brace 3000 x 1300	F079213000									7.10	148.70
Handrail for staircase (scaffold tower) 2000 x 1813	F079842000								9	3.10	94.60

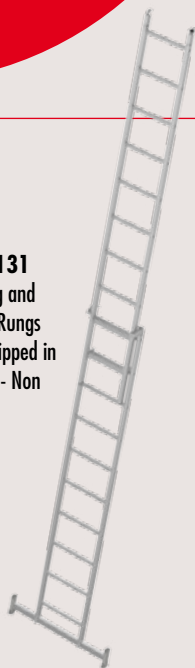
Designation	Ref.	ERIS	NOVA	SATURNE	JUPITER	VENUS	URANUS	SPECIAL TAILLE HAIRES	Repare	Weight kg	Price per unit €
Handrail for staircase (scaffold tower) 2500 x 1813	F079842500									3.40	98.70
Handrail for staircase (scaffold tower) 3000 x 1813	F079843000									3.70	104.20
Pole with ring length 1024	F079901024									1.40	123.50
Deck with trapdoor alu/plywood 2000 x 650	PT2000/650N2-RLT									16.20	293.10
Deck with trapdoor alu/plywood 2500 x 650	PT2500/650N2-RLT									19.70	314.70
Deck with trapdoor alu/plywood 3000 x 650	PT3000/650N2-RLT									22.90	338.70
Deck with long trapdoor alu/plywood 2000 x 600	PTL2000/596N2-RLT								10	15.40	307.10
Deck with long trapdoor alu/plywood 2500 x 600	PTL2500/596N2-RLT									18.80	316.70
Deck with long trapdoor alu/plywood 3000 x 600	PTL3000/596N2-RLT									21.40	349.40
Standard deck 2000 x 500	P2000/500N2-RLT									13.40	225.50
Standard deck 2500 x 500	P2500/500N2-RLT									16.50	239.30
Standard deck 3000 x 500	P3000/500N2-RLT								11	18.80	268.70
Standard deck 2000 x 596	P2000/596N2-RLT								12	14.50	230.10
Standard deck 2500 x 596	P2500/596N2-RLT									17.90	256.30
Standard deck 3000 x 596	P3000/596N2-RLT									20.50	280.90
Deck with trapdoor 2000 x 596	PT2000/596N2-RLT									15.40	274.70
Deck with trapdoor 2500 x 596	PT2500/596N2-RLT									18.80	286.00
Deck with trapdoor 3000 x 596	PT3000/596N2-RLT									21.40	331.40
Foldable baseboard 2000 x 596	F040150015									6.10	80.70
Foldable baseboard 2500 x 596	F040150016									7.40	95.90
Foldable baseboard 3000 x 596	F040150017								13	8.60	111.00
Foldable baseboard 2000 x 650	F040150025									6.30	83.40
Foldable baseboard 2500 x 650	F040150026									7.50	98.70
Foldable baseboard 3000 x 650	F040150027								13	8.70	114.00
Foldable baseboard 2000 x 1095	F040150005									7.20	169.40
Foldable baseboard 2500 x 1095	F040150006									8.50	184.50
Foldable baseboard 3000 x 1095	F040150007									9.70	215.00
Safety gate for hedge trimmers	F079880005									3.00	114.00
Wheel Ø 125 with brake mounted on a sheath	F079650005									0.90	29.30
Wheel Ø 150 swivel with brake 350 kg on a jack	A790200150									4.50	105.60
Wheel Ø 200 with brake 500 kg on steel jack (with anti-dislocation device)	A790200200									6.50	127.80
Wheel Ø 200 - 200 kg on steel jack	F079652540									6.60	68.20
Fixed wheel Ø 260 - 800 alu jack	F079653520									5.24	156.80
Telescopic stabilizer large model	F079700001									8.70	201.20
Telescopic stabilizer small model	F079700002									6.60	166.50
Machine support	F030040036									0.90	24.00
Tools tray	F030040035									1.65	104.20
Stabilizer large model	F079700041									4.50	118.20
Stabilizer small model	F079700042									3.20	94.60

* Only for JUPITER and SATURN 1300 models

Ladders

"T2A" combination ladder

1 reference - 2 uses - Complies with standard EN 131
 Aluminum ladder - 2 sections combination ladder for sliding and double configurations - Distance between rungs 280 mm - Rungs section 25 x 25 mm - High-strength cast-aluminum joint gripped in the rungs when crimped - Extruded profile - Safety locking - Non marking pads



Reference	Number of rungs	Length (mm)			Profiles sections (mm)	Weight kg	Price €
		closed	open	double			
F011590180	6	1800	3000	1670	65 x 25	9.00	214.50
F011590200	7	2100	3510	1950	65 x 25	10.00	222.60
F011590250	8	2380	4070	2220	65 x 25	12.00	247.30
F011590300	10	2940	4910	2720	65 x 25	14.00	289.70
F011590350*	12	3510	6030	3230	75 x 25	20.50	405.10
F011590400*	14	4070	7150	3730	75 x 25	23.50	462.80

*Equipped with rope

"C2A" Extension ladder (with rope)

Complies with standard EN 131
 Aluminum ladder - 2 sections extension ladder with rope and automatic high-strength cast-aluminum safety catch - Extruded profiles - Façade wheels - Non marking pads - Distance between rungs 250 mm - Rungs section 25 x 25 mm - Available from 11 to 21 rungs with stabilizer frame equipped with pads



Reference	Number of rungs	Length (mm)			Profiles sections (mm)	Weight kg	Price €
		closed	open	double			
F011040300	11	2980	4980		75 x 25	16.50	362.60
F011040350	13	3500	6000		75 x 25	20.00	398.30
F011040400	15	4000	7000		90 x 25	26.00	455.90
F011040450	17	4500	8000		90 x 25	29.00	494.30
F011040500	19	5000	9000		90 x 25	32.00	580.80
F011040550	21	5500	10000		90 x 25	35.00	704.20

"C2MA" extension ladder (without rope)

Complies with standard EN 131
 Aluminum ladder - Distance between rungs 280 mm - Rungs section 25 x 25 mm - Safety locking - Extruded profile - Non marking pads - Available from 8 to 13 rungs with stabilizer frame equipped with pads



Reference	Number of rungs	Length (mm)			Profiles sections (mm)	Weight kg	Price €
		closed	open	double			
F011150200	6	1950	2800		65 x 25	8.00	200.70
F011150250	8	2500	3900		65 x 25	10.00	232.20
F011150300	10	3050	5000		65 x 25	12.50	263.80
F011150350	12	3600	6130		75 x 25	18.00	422.90
F011150400	13	3900	6700		90 x 25	23.00	471.00

"T3A" combination ladder

1 reference - 3 uses
Complies with standard EN 131
 Aluminum ladder for multiple uses - Stability on all types of terrain - Rungs section 25 x 25 mm - Cast-aluminum joint - Extruded profile



Reference	Number of rungs	Length (mm)			Profiles sections (mm)	Weight kg	Price €
		closed	open	double			
F011600180	6	1800	4200	2870	65 x 25	13.00	302.10
F011600200	7	2100	4900	3270	65 x 25	15.00	342.00
F011600250	8	2380	5740	3740	75 x 25	19.50	425.60
F011600300	10	2940	6850	4490	75 x 25	24.50	503.90
F011600350*	12	3510	7980	5050	75 x 25	30.00	634.20

*Equipped with rope and facade wheels

Ladders

"S" simple ladder

Complies with standard EN 131

Steel ladder with aluminum rungs - Distance between rungs 265 mm - Rungs section 25 x 25 mm - Non marking pads - Frame width: 354 mm (except models with 14 and 17 rungs) - Useful width: 304 mm



Reference	Number of rungs	Length (mm)	Profiles sections (mm)	Weight kg	Price €
F256062000	7	2040	50 x 25	5.90	75.10
F256062500	9	2520	50 x 25	7.33	86.70
F256063000	10	2980	50 x 25	8.90	101.00
F256064000*	14	3970	50 x 25	12.50	138.30
F256065000*	18	5030	50 x 25	15.60	177.30

*Adjustable hooks not usable on this model

"SA" simple ladder

Complies with standard EN 131

Aluminum ladder - Distance between rungs 280 mm - Rungs section 25 x 25 mm - Extruded profile - Non marking pads - Available in two widths: 322 and 452 mm



Reference	Number of rungs	Length (mm)	Useful width (mm)	Profiles sections (mm)	Weight kg	Price €
F011520200	6	1950	322	65 x 25	3.00	78.60
F011520250	8	2500		65 x 25	4.00	92.30
F011520300	10	2980		65 x 25	6.00	107.50
F011520350	12	3600		65 x 25	8.00	123.70
F011520400	13	3900		65 x 25	9.00	140.30
F011520450	15	4460		65 x 25	10.00	154.20
F011520500	17	5020		75 x 25	13.00	181.50
F011520550	19	5560		75 x 25	14.00	210.80
F011520600	21	6060		75 x 25	15.00	239.00
F011520200-500	6	1950		452	65 x 25	3.30
F011520250-500	8	2500	65 x 25		4.40	110.80
F011520300-500	10	2980	65 x 25		6.50	129.00
F011520350-500	12	3600	65 x 25		8.55	148.70
F011520400-500	13	3900	65 x 25		9.60	168.50
F011520450-500	15	4460	65 x 25		10.70	184.80
F011520500-500	17	5020	75 x 25		13.80	217.70
F011520550-500	19	5560	75 x 25		14.90	252.80
F011520600-500	21	6060	75 x 25		16.00	287.10

"SEA" simple ladder

Complies with standard EN 131

Aluminum ladder - Splayed base - Distance between rungs 280 mm - Rungs section 25 x 25 mm - Non marking pads



Reference	Number of rungs	Length (mm)	Profiles sections (mm)	Weight kg	Price €
F010510200	6	1950	65 x 25	5.00	108.70
F010510250	8	2500	65 x 25	6.50	126.60
F010510300	10	3050	65 x 25	8.40	155.30
F010510350	12	3600	65 x 25	9.50	177.40
F010510400	13	3900	65 x 25	10.00	195.20
F010510450	15	4460	65 x 25	11.50	221.30
F010510500	17	5020	75 x 25	14.50	270.80
F010510550	19	5560	75 x 25	16.00	295.40

"SPA" foldable ladder



Complies with standard EN 131

Aluminum ladder - Simple or double configurations thanks to joint locking system with spindle - Distance between rungs 280 mm - Rungs section 25 x 25 mm - Extruded profile - Non marking pads - Frame width: 370 mm (except model with 2 x 6 rungs) - Useful width: 322 mm

Reference	Number of rungs	Length (mm)		Profiles sections (mm)	Weight kg	Price €
		closed	open			
F011560100	2 x 3	1000	1990	65 x 25	4.50	147.30
F011560125	2 x 4	1250	2500	65 x 25	6.00	162.30
F011560150	2 x 5	1450	2900	65 x 25	7.00	181.50
F011560180	2 x 6	1820	3640	65 x 25	9.00	226.70

"SMA" simple ladder

Complies with standard EN 131

Aluminum ladder - Distance between steps 280 mm - Anti-slip steps depth 80 mm - Reinforcement of steps by rungs section 25 x 25 mm - Extruded profile - Non marking pads - Frame width: 370 mm (except models from 12 to 21 rungs) - Useful width: 322 mm

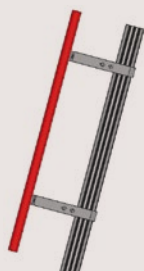


Reference	Number of steps	Length (mm)	Profiles sections (mm)	Weight kg	Price €
F011570200	6	1950	65 x 25	6.80	131.90
F011570250	8	2500	65 x 25	7.50	181.50
F011570300	10	2980	65 x 25	9.00	207.60
F011570350	12	3600	65 x 25	12.00	234.90
F011570400	13	3900	65 x 25	13.65	287.20
F011570450	15	4460	65 x 25	14.50	357.20
F011570500	17	5020	75 x 25	18.00	381.90
F011570550	19	5560	75 x 25	21.00	402.40
F011570600	21	6060	75 x 25	24.50	410.80

Accessories for ladders

All our accessories are design in compliance with the safety requirements.

Options



For "SA" and "SMA" ladders

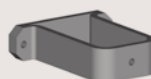
Handrail - Ø 40 mm fixed on the ladder profile (delivery with fixing foot)

Reference	Designation	Weight kg	Price €
F030010027-100	Length 1 m	1.50	75.60
F030010027-150	Length 1.5 m	2.00	113.00
F030010027-200	Length 2 m	2.40	150.40
F030010027-220	Length 2.2 m	2.60	168.90
F030010027-250	Length 2.5 m	3.10	188.00
F030010027-270	Length 2.7 m	3.30	206.50
F030010027-300	Length 3 m	3.60	225.20
F030010027-350	Length 3.5 m	4.00	262.40
F030010027-400	Length 4 m	4.40	300.00
F030010027-450	Length 4.5 m	4.90	336.90
F030010027-460	Length 4.6 m	5.00	341.70
F030010027-500	Length 5 m	5.70	374.40
F030010027-550	Length 5.5 m	5.90	410.30



Ladder wheels

Reference	Designation	Weight kg	Price €
F030010020	For "C2A" ladder (one-piece)	0.145	14.90
F030010021	Pulley + square creed for "C2A" extension ladder	0.09	32.00
F030010022	Rope meter	0.043	10.90



Wall bracket

Anti-theft wall bracket

Reference	Designation	Weight kg	Price €
F030010013	Anti-theft delivery without padlock	0.50	63.00

Hooks



1

Zinc plated steel hooks to screw (one-piece)

Reference	Marker	Designation	Weight kg	Price €
F030030001	1	For bar up to Ø 30 mm	0.29	9.70
F030030002	1	For bar up to Ø 50 mm	0.58	13.90



2

Aluminum hooks (one-piece) - Adjustable in height (adjustable on profile 65x25 mm)

Reference	Marker	Designation	Weight kg	Price €
F030030010	2	Round extremity for bar up to Ø 50 mm	0.26	32.00
F030030011	3	Flat extremity for flat support up to Ø 100 mm	0.64	34.30



3

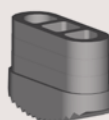
Aluminum hanging bar

Reference	Marker	Designation	Weight kg	Price €
F030030025	4	Length 498 mm - adjustable - adapted with groove profiles 100 x 30 and 110 x 35 mm	4.00	65.50



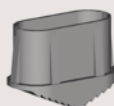
4

Pads and adjustable foot



Pads (one-piece)

Reference	Designation	Weight kg	Price €
A750013925	Grey foot pad 39 x 25 mm	0.028	7.80
A750016525	Grey foot pad 65 x 25 mm	0.055	8.70
A750017525	Grey foot pad 75 x 25 mm	0.061	9.20
A750019025	Grey foot pad 90 x 25 mm	0.062	9.40
A750011525	Grey foot pad 115 x 25 mm	0.082	13.30
A750010015	Grey anti-slip sock pad 65 x 25 mm	0.063	10.00
A750010020	Grey anti-slip sock pad 75 x 25 mm	0.078	10.90
A750010025	Grey anti-slip sock pad 90 x 25 mm	0.105	11.30
A750010030	Grey anti-slip sock pad 115 x 25 mm	0.213	12.40



Adjustable foot - for section profiles 65, 75 and 90 mm. Adjustable for larger profile on request, maximal stroke 500 mm.

Reference	Designation	Weight kg	Price €
F030010006	Non compatible with splayed base and combination ladders	3.05	84.40

Foldable aluminum trestle

Steel compass with over-spreading device - Coast-aluminum joint

Reference	Designation	Volume	Weight kg	Price €
F030010025	Foldable aluminum trestle 900 x 170 x (H) 835 mm	0.13	6.00	122.30



All aluminium



Articulated pads (one-piece) - for section profiles 65, 75, 90 mm. Adjustable for larger profile on request. Allow ladder foot to be fully and permanently on the ground.

Reference	Designation	Weight kg	Price €
F030010007		0.46	53.50

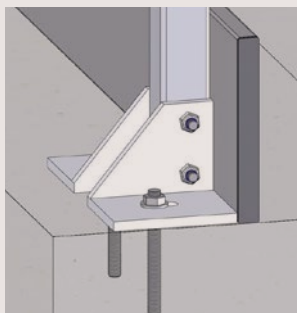
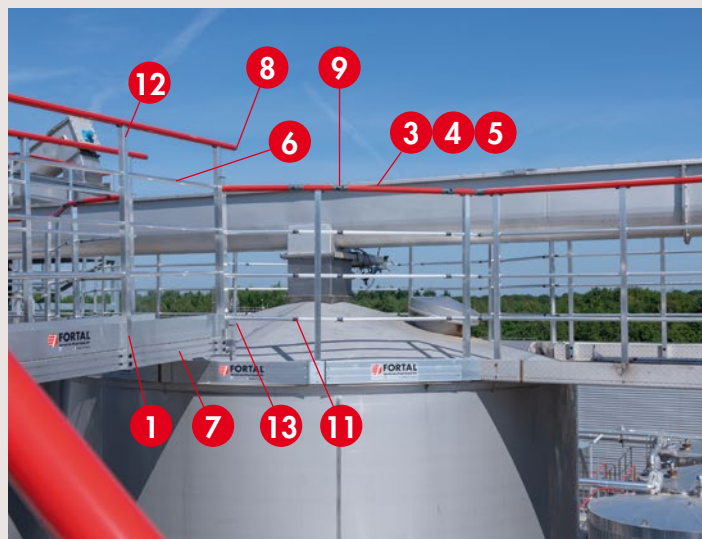
Spare parts "kit" guardrail

Exclusive components

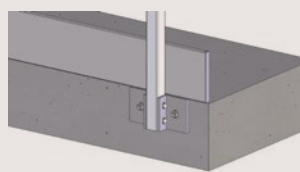
FORTAL guardrail are compliant to current standard for industrial access: ISO 14-122 and NF EN 85-015.

Their features:

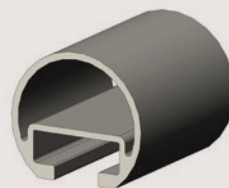
- Quick installation thanks to the low number of component parts
- "Kit" design provides for the ideal configuration



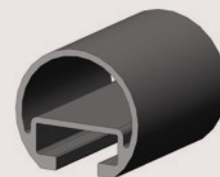
1 Anchorage post on top of slab
Ref. F191000025



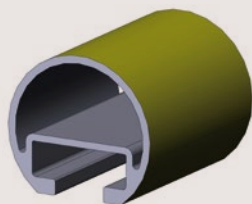
2 Front anchorage post on slab
Ref. F191000026
Non represented



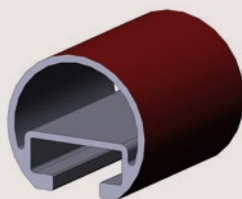
3 Anodised handrail Ø 40
Ref. A862264780



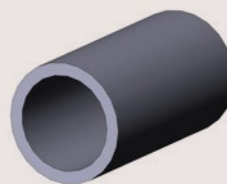
4 Raw aluminum handrail Ø 40
Ref. A852264780



5 Yellow lacquered handrail Ø 40
Ref. A872264780-1023



5 Red lacquered handrail Ø 40
Ref. A872264780-3000



6 Intermediary rail Ø 27
Ref. A850795920



7 Baseboard
Ref. A851276020



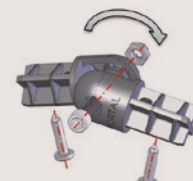
8 Endcap
Ref. A753000003



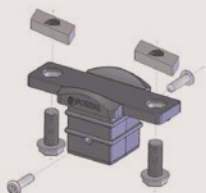
9 Corner connector
Ref. F191000005



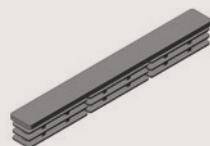
10 Handrail connector joint
Ref. F191000010
Non represented



11 Intermediary rail connector joint
Ref. F191000015



12 Handrail / Post connector
Ref. F191000008



13 Baseboard cap
Ref. A750030029

Reference	Designation	Marker	Weight kg	Price €
F191000025	Anchorage post on slab (with screw - without dowel)	1		78.80
F191000026	Anchorage post front fixing on slab (with screw - without dowel)	2		78.80
A862264780	Anodised ramp for guardrail - 1 groove Ø 40 - length 4780 mm	3	0.86 kg/m	69.90
A852264780	Raw ramp for guardrail - 1 groove Ø 40 - length 4780 mm	4	0.86 kg/m	63.80
A872264780-1023	Yellow lacquered (RAL 1023) ramp for guardrail - 1 groove Ø 40 - length 4780 mm	5	0.86 kg/m	69.90
A872264780-3000	Red lacquered (RAL 3000) ramp for guardrail - 1 groove Ø 40 - length 4780 mm	5	0.86 kg/m	69.90
A850795920	Raw intermediary rail for guardrail (26.8 x 2.8) - bar length 5710 mm	6	0.57 kg/m	51.30
A851276020	Baseboard 150 x 17 mm - length 6020 mm	7	1.208 kg/m	109.80
A753000003	Handrail endcap Ø 40	8	0.008	1.60
F191000005	Corner connector 90° (with screw)	9		7.60
F191000010	Handrail connector joint Ø 40 (with screw)	10		6.20
F191000015	Intermediary rail connector joint Ø 27 (with screw)	11		4.70
F191000008	Handrail / post connector (with screw)	12		9.20
A750030029	Baseboard cap - 150 x 17 mm	13	0.03	2.80
A750030025	Black cap 320 GL Ø 25		0.003	1.40
A750030028	Round black cap Ø40 for handrail		0.0004	1.50
A751100040	Post black cap 40 x 40 mm		0.006	1.90
F191000041	Angle for slab fixation (with screw - without dowel)			22.90
F191000042	Angle for front fixation (with screw - without dowel)			22.90
F191000031-038	Guardrail post 40 x 40 x 4 mm fixed on staircase lime 38°			60.20
F191000031-045	Guardrail post 40 x 40 x 4 mm fixed on staircase lime 45°			57.60
F191000031-060	Guardrail post 40 x 40 x 4 mm fixed on staircase lime 60°			52.20
F191000030	Post fixed on front of guardrail 40 x 40 x 4 mm			58.30
F191000050	Flat connecting plate profile for baseboard		0.096	7.60

Excerpts from Fortal's general terms and conditions of sale

PRICES / ORDERS

Our prices may be updated at any time without prior notice. They are quoted notwithstanding circumstances which may affect prices during the order period with regard to taxes and duties on the goods, commodity prices, salaries, customs duties, transport tariffs and exchange rates.

Any upward variations or fluctuations prior to delivery remain at the customer's cost. The customer shall also benefit from any downward trend.

Unless otherwise stipulated, and upon SAS FORTAL's sole discretion, orders given orally are deemed to be firm and irrevocable. Should the customer cancel all or part of the order, the full price shall remain due. This provision neither excludes nor limits the scope of the cancellation clause hereunder.

PAYMENT TERMS

Payments shall be made net without discounts or deductions on the due date quoted on the invoices. Bills of exchange and bills for acceptance do not act as a substitution or exemption from the terms or place of payment.

When a banker's draft or negotiable instrument has been agreed to, they must be accepted and returned within eight days of receipt.

Penalties for late payment are applicable on the day following the due date quoted on the invoice, i.e. in principle, excepting stipulations to the contrary agreed between the parties, on the date the goods are received or the date of performance of the service requested.

In all events, the provisions laid down in the Act called LME (French Act on Modernising the Economy) of 4 August 2008 must be adhered to. Should the sums due be paid after the date quoted on the invoice, this late payment shall lawfully give rise to the settlement of late payment interest set at three times the legal interest rate.

In accordance with the provisions of Article L.441-6 of the French Commercial Code, enforceability is not subject to the prior sending of formal notice.

Late payments accepted by our company also automatically and rightfully incur the payment of an indemnity set at three times the legal interest rate (default interest).

In the event of late payment, we reserve the right to defer or cancel current orders without prejudice to any other recourse and to rightfully demand payment in full of all outstanding debts or debts that shall fall due, without prior notice.

PENALTY CLAUSE

Excepting deferral by our company, it is expressly agreed, whatever the means of settlement agreed on, that failure to pay at the due date shall give rise to legal action and the application of an indemnity set at 15 % of the amount outstanding as damages, to which shall be added all legal costs and legal interest.

DELIVERY DEADLINES

Our delivery deadlines are purely indicative. They do not constitute a formal commitment on our part. Any delay in delivery shall not constitute a reason for cancelling the order and shall in no way stand as a pretext for claims for compensation to the benefit of the customer.

In all events, should penalties be explicitly provided for between the parties, they shall not be due in the event of force majeure, strikes, lock-outs, damage due to incidents, late or interrupted transport, failure of suppliers towards our company or for any other event beyond our control, even if said event does not constitute force majeure under existing French law.

PACKAGING - TRANSPORT

Unless otherwise expressly stipulated, our prices are quoted for goods ex-works or ex-warehouse, packaging not included. In the case of shipment carriage-free, the goods shall travel by the most economical means. Additional costs for any other means of transport shall be exclusively payable by the customer.

The goods travel at the risk of the receiver even when shipment is carriage-free. Should damage, loss or theft occur in transit, or in the event of a late delivery, it is up to the receiver to exercise any recourse against the carriers. In all events, excepting complaints reported upon delivery, the purchaser may not enter a claim for non-conformance afterwards in order to withdraw from payment, unless a claim is sent to us within 5 days of the invoicing date by recorded delivery mail with acknowledgement of receipt.

Should the purchaser abstain from taking delivery of the goods, the payment of said goods remains payable in full without any formal notice being sent for the goods to be recovered, and without prejudice to the payment of damages.

Furthermore, SAS FORTAL insists that proof of the delivery of the goods shall necessarily entail signature of the delivery slip, since actual practice (in particular delivery to worksites) does not often allow for signature at the point of delivery.

OWNERSHIP CLAUSE

By express agreement, the goods delivered shall remain the property of SAS FORTAL until they are paid for in full, in accordance with the provisions of French Act n° N°80.335 of 12 May 1980. Should the purchaser fail to pay within the agreed term, the sale shall be rightfully rescinded. The parties agree to apply this clause, it being understood that this provision does not hinder the full transfer of risks.

CANCELLATION CLAUSE

Should the customer fail to perform any one of their commitments, including in the event of non-payment on the due date of all or part of the amounts due, the contract shall be rightfully cancelled at SAS FORTAL's convenience, 15 days after sending formal notice addressed to the customer requesting that they put an end to the non-respect of their commitments, should such request be in vain, without it being necessary to enter a suit before the courts and notwithstanding the performance of all contractual obligations on the part of the customer.

Cancellation shall only come into effect once a recorded delivery letter with acknowledgement of receipt has been sent to the customer informing them of the cancellation in due form. As soon as this letter has been sent, SAS FORTAL shall be released from all obligations and all liability towards the customer.

In the event of cancellation, the purchaser shall owe a flat-rate contractual indemnity amounting to 15 % of the price quoted on the invoice(s). This indemnity may be offset against any sum owed by SAS FORTAL.

WARRANTY

FORTAL products benefit from a 2-year warranty from the delivery date. Supply of spare parts equivalent to the original part is guaranteed for 10 years.

CONFIDENTIALITY

The parties undertake not to communicate any information received during the performance of the service in any form whatsoever.

LAW APPLICABLE

The validity, interpretation and performance of this Contract and the resolution of any disputes related thereto shall be executed and interpreted with reference to French law.

JURISDICTION

The Parties shall make every effort to find a friendly settlement to any disagreement resulting from the interpretation or the performance of the agreement herein.

Should the Parties fail to find a settlement and should the disagreement persist, they agree forthwith to refer the matter to the court which has jurisdiction over the head office of SAS FORTAL, even in the case of multiple defendants or the introduction of third parties.

Design and manufacture of secure access for work at height



Ask for our
general catalog

Dealer's stamp



FORTAL[®]
www.fortal.fr

🇫🇷 Made in France

Z.I. du MUCKENTAL - F-67140 BARR

☎: +(33) 03 88 58 53 53

☎: +(33) 03 88 58 53 54

✉: info@ortal.fr



web